

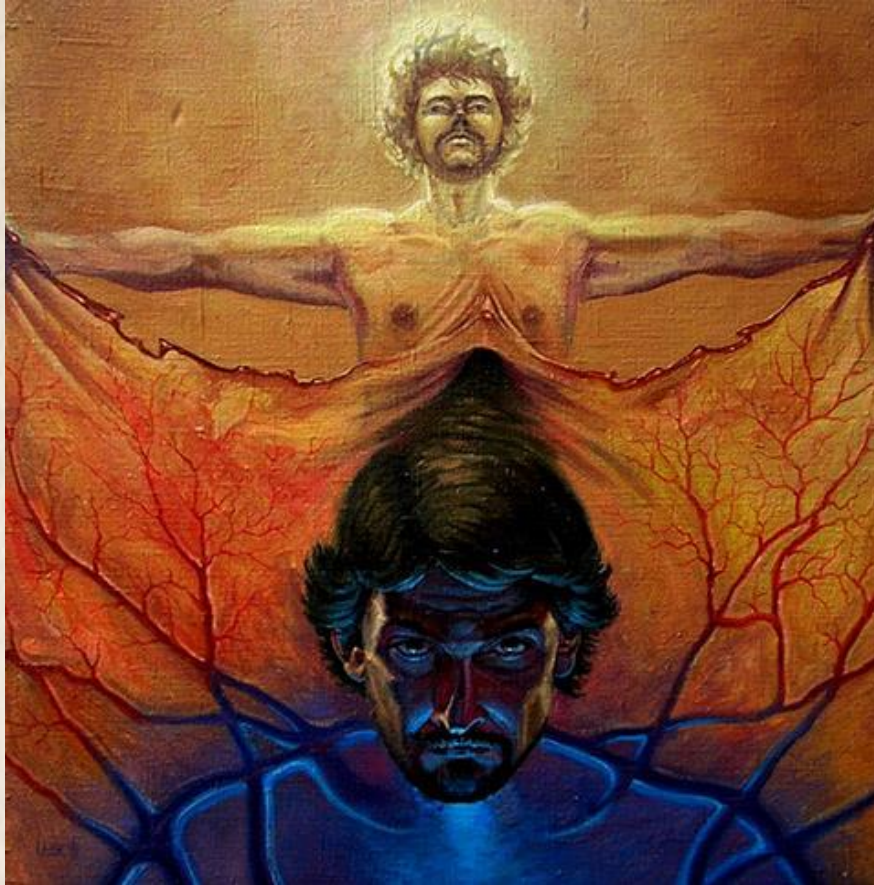
# SPIRITS





# **The New Cosmic Philosophy**

## **Volume VIII**



**"R&R"** canvas, oil, 70x70 cm, 1999. Copyright © [Serge Laisk](#)

**An amateur`s essay on the Universe ...**  
**Who are we? Where are we from? Where do we go?**  
**A Human being, his Worlds, his Gods...**

Copyright © 1973-2018, [Mykola Krasnostup & Co.](#) All Rights Reserved.

Cover page - Copyright © 2013, Eugene Prodayko. All Rights Reserved.

This e-book or any portion thereof may not be reproduced or used in any manner whatsoever without the express written permission of the publisher except for the use of brief quotations in a book review.



CONTENT

<b>1. THE SPIRITUAL WORLD .....</b>	<b>6</b>
1.1. "VISIBILITY" OF THE SPIRITUAL WORLD .....	6
1.2. THE METHODS OF COGNIZING THE SPIRITUAL WORLD .....	9
1.3. THE BASIC METHODS OF "BROADING" THE SPIRITUAL WORLD.....	11
1.4. THE COMPARISON OF THE METHODS OF "BROADING" ONE`S SPIRITUAL WORLD.....	12
1.5. THE TERMINOLOGY FOR DESCRIBING THE SPIRITUAL WORLDS .....	19
1.6. THE EVOLUTION OF THE SPIRITUAL WORLDS.....	20
<b>2. TIME AND THE UNITS TO MEASURE IT .....</b>	<b>25</b>
2.1. THE MAIN UNITS OF TIME MEASUREMENT .....	28
2.2. THE GEOLOGIC TIME SCALES.....	29
2.3. THE HISTORICAL TIME MEASUREMENT .....	30
2.4. STANDARDS OF TIME .....	31
2.5. THE GEOCHRONOLOGICAL SCALE OF THE EARTH.....	33
<b>3. THE HYPOTHETIC HIERARCHICAL MODEL OF THE WORLD`S (IN THE BROADEST SENSE OF THIS WORD) OBJECTS.....</b>	<b>37</b>
3.1. A FRAME – THE UNIT OF TIME MEASUREMENT, FIRSTLY INTRODUCED BY K. TSIOLKOVSKY .....	37
3.2. THE OBJECTS WHOSE PERIOD OF THE EVOLUTION DOESN`T EXCEED AGE OF THE UNIVERSE.....	39
3.3. THE OBJECTS WHOSE PERIOD OF THE EVOLUTION EXCEEDS AGE OF THE UNIVERSE .....	41
3.4. THE OBJECTS OF THE NEIGHBOR "IMMATERIAL" WORLD.....	43
3.5. THE OBJECTS OF THE DISTANT "IMMATERIAL" WORLD.....	44
3.6. THE CONVENTIONAL HIERARCHY OF THE OBJECTS FROM THE WORLD (IN THE BROADEST SENSE OF THIS WORD) ACCORDING TO POSSIBILITY TO MANIFEST THEM .....	45
3.7. THE CONVENTIONAL HIERARCHY OF THE OBJECTS FROM THE WORLD (IN THE BROADEST SENSE OF THIS WORD) ACCORDING TO THEIR DENSITY.....	47

3.8. THE CONVENTIONAL HIERARCHY OF THE OBJECTS FROM THE NEIGHBOR “MATERIAL” WORLD ACCORDING TO THEIR DENSITY .....	49
3.9. WHAT WILL ENSUE FROM THIS?.....	50
<b>4. SPIRITS.....</b>	<b>52</b>
4.1. SPIRITS – THE OBJECTS BASED ON SPIRITS.....	54
4.2. SPIRITS – THE OBJECTS OF THE SPIRITUAL WORLD.....	56
4.3. THE MAIN DIFFERENCE BETWEEN SPIRITS AND OTHER OBJECTS OF “THE MATERIAL” WORLD.....	57
4.4. WHAT DID THE ANCIENTS KNOW ABOUT SPRITES? .....	58
4.5. HOW DO THE MODERN SCIENTISTS INTERPET THE WORD SPIRIT? .....	58
4.6. SPIRITUALIZATION OF “THE MATERIAL” WORLD.....	59
4.7. THE VARIETY AND HIERARCHY OF SPIRITS .....	60
<b>5. THE GUARDIANS AND MENTORS .....</b>	<b>61</b>
5.1. GUARDIANS AND GUARDIAN ANGELS.....	61
5.2. DEMONS OR MENTORS.....	64
5.3. IS IT POSSIBLE “TO DRIVE OUT” DEMONS?.....	70
<b>6. SIN IS THE OBJECTIVE CONCEPT .....</b>	<b>74</b>
<b>7. CONFESSION – THE METHOD OF SALVATION .....</b>	<b>77</b>
<b>8. PARADISE AND HELL .....</b>	<b>80</b>
8.1. WHAT IS HELL?.....	80
8.2. WHAT IS PARADISE?.....	83
8.3. THE DIFFERENCE BETWEEN HELL AND PARADISE .....	85
<b>9. SPIRITUALITY .....</b>	<b>87</b>
9.1. THE INNER INDICATORS OF SPIRITUALITY.....	87
9.2. SPIRITUALIZATION .....	89
9.3. THE EXTERNAL INDICATORS OF SPIRITUALITY .....	90



9.4. THE HYPOTHESIS ON THE MAIN MANIFESTATION PRINCIPLE OF “DIVINE” POWERS AND OPPORTUNITIES .....	91
9.5. TRUE vs IMAGINARY SPIRITUALITY.....	92
9.6. THE INITIATED OR SPIRITUAL GUIDES.....	93
9.7. HOLINESS AND A HOLY PERSON .....	93
<b>10. THE MEASUREMENT OF SPIRITUAL LEVEL .....</b>	<b>94</b>
10.1. A FUNDAMENTAL DANGER OF CREATING NEW TECHNOLOGIES BY THE SPIRITLESS HUMAN BEINGS..	94
10.2. THE HYPOTHESIS ON PRINCIPAL POSSIBILITY TO MEASURE THE LEVEL OF SPIRITUALITY .....	96
10.3. THE MAIN PRINCIPLES OF MEASUREMENT .....	97
10.4. THE IMPORTANCE OF MEASURING A SPIRITUAL LEVEL FOR THE FUTURE OF THE HUMANKIND...	100
10.5. THE MAIN PRINCIPLE OF THE XXI CENTURY’S POWER.....	105
<b>11. AUTHORS – MYKOLA KRASNOSTUP &amp; CO .....</b>	<b>107</b>

## 1. The SPIRITUAL World

### 1.1. “Visibility” of the SPIRITUAL World

Actually, who told about “invisibility” of the spiritual World?

When individual cognizes the World (in the broadest sense of this word), he constantly includes some objects, processes and phenomena from “the immaterial” to his “material” World, i.e. he begins to manifest previously “invisible” objects, processes and phenomena. These objects, processes and phenomena can be either material or immaterial ones.

**THE SPIRITUAL World –  
a part of one`s immaterial World that merged into  
somebody`s material World as a result of cognition  
(manifestation, perception).**

Of course, inquisitive readers may disagree with the author`s definition. On first glance, it seems that only immaterial objects must exist in the SPIRITUAL World.

But it isn`t quite so.

If individual expands the range of manifested physical quantities (the ranges of electromagnetic, electric, magnetic, sound and many other oscillations, ability



to measure very short and very long intervals of time, etc.), then a part of “the immaterial” World will become “visible” to him, i.e. will become a part of his “material” World. Exactly this part is called the SPIRITUAL World of individual.

As an example, the high-speed movement of “material” objects. Only particular people are able to observe these objects and their movements (from time to time, you can find on the Internet information about people attempts to record the shift (movement) of these objects, using high-speed video cameras in order to persuade other people who don't believe in their narratives (stories). In fact, they want to prove that they “aren't sick in the heads”. But nobody needs these videorecordings. For the majority of the Earth's population “this cannot happen, because it cannot ever happen!”

The World of individual includes his “material” and SPIRITUAL Worlds. “The material” and SPIRITUAL Worlds are subjective. One is able “to see” (sense) some things while another one isn't able to do it at all. Some people consider this fact surprising, others perceive it as outrageous lie. But no one surprises that there is only one Olympic champion or world champion in any kind of the sport, and most people cannot do the same thing as well as couldn't take a step closer to the results of a certain sporsman. As a matter of fact, this requires a lot of trainings, lifelong trainings ...

The World of individual is a part of the World (in the broadest sense of this word) he has manifested as sensations and reflected as lots of objects, processes and phenomena. The World of individual is the result of his labor (cognition), which is determined by a clear quantity – the volume of his consciousness (the volume of generalized and systematized information about the World (in the broadest sense of this word)).

The referring certain objects, processes and phenomena to “visible” or “invisible” is (conditionally) subjective, since equal objects can be either “visible” or “invisible” to different individuals.

**THE MATERIAL World –  
a subjective World of individual.**

**THE SPIRITUAL World –  
a part of the material World of individual.**

**THE SPIRITUAL World –  
a subjective World of individual.**



The terms the author connected with the BOUNDARIES between “the material”, “immaterial” and spiritual Worlds he described in more detail in the III “WORLDS” Volume of “The New Cosmic Philosophy” book series. (author`s note).



## **1.2. The methods of cognizing the SPIRITUAL World**

There can be lots of the methods of cognizing the World (in the broadest sense of this word), just as many as people are able to invent. And every individual has his own (personal) experience, on the basis of which he shapes his World, using one or several methods of cognizing at the same time:

- “a scientific experiment (method)”;
- “a day-to-day experiment (method);
- “a socio-political experiment (method);
- “a religious experiment (method);
- an experiment (method) of studying and realizing spiritual practices;
- an experiment (method) of studying philosophical teachings;
- etc.

Individual can use in his activity any of all the mentioned-above methods of cognizing, all they are intended for cognizing the World (in the broadest sense of this word). The SPIRITUAL World is a small part of this World.

When individual makes efforts to cognize the SPIRITUAL World, we can talk about his involvement in his SPIRITUAL growth.



**SPIRITUAL growth –  
one`s studying and realizing philosophical teachings  
(spiritual practices) that are intended for broadening  
manifestation (perception) possibilities of the  
individual`s body (bodies).**



The terms the author connected with SPIRITUAL GROWTH concept he described in more detail in the II “HIDDEN KNOWLEDGE” Volume of “The New Cosmic Philosophy” book series (author`s note).

It`s important to understand that SPIRITUAL method has no relation to any of existing religions. We are talking about COGNITION, and not about BELIEF.

**SPIRITUAL method –  
the method of one`s studying the World (in the  
broadest sense of this word); it`s based only on  
COGNITION of this one, but not on his BELIEF in its  
existence.**



## 1.3. The basic methods of “broading” the SPIRITUAL World

Let`s enumerate the basic methods that will help various objects, process and phenomena to pass from one`s “immaterial” to his “material” World, after this they become a part of the SPIRITUAL World of this individual:

- **The basic method** – spiritual growth or spiritual practice;
- **An addition to the basic method** – using technical means to work with the wider ranges of different physical quantities;
- **An addition to the basic method** – usage of the different “additional illuminations” and “lightnings”;
- **The possible but undesired methods** – “a random” or “nonrandom” “post traumatic syndrome”.



The basic methods for various objects, processes, phenomena to pass from one`s “immaterial” to his “material” World the author described in more detail in the II “HIDDEN KNOWLEDGE” Volume of “The New Cosmic Philosophy” book series (author`s note).



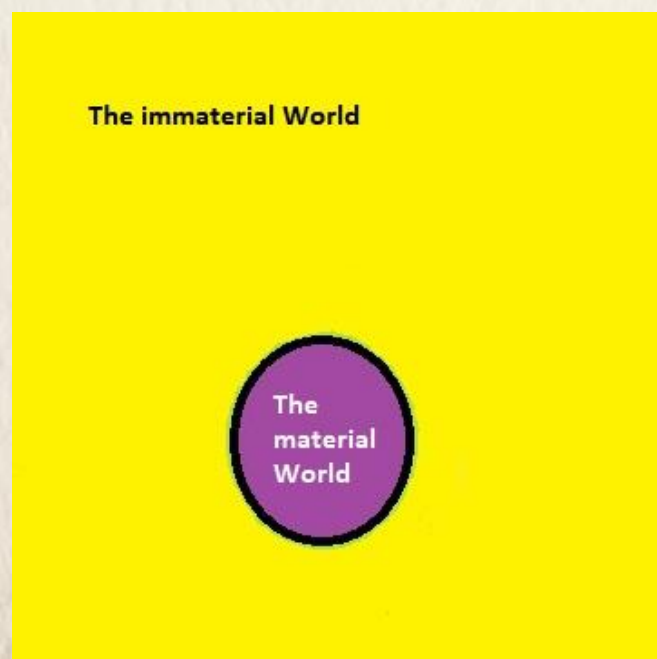
## 1.4. The comparison of the methods of “broadening” one’s SPIRITUAL World

We compare these methods on the basis of the set theory.

**The 1<sup>st</sup> variant – the spiritual methods of cognizing the World (in the broadest sense of this word)**

Let’s depict changes in “the boundaries” of three Worlds of individual (“material”, “immaterial” and spiritual ones) in the case he uses the spiritual methods of cognizing the World.

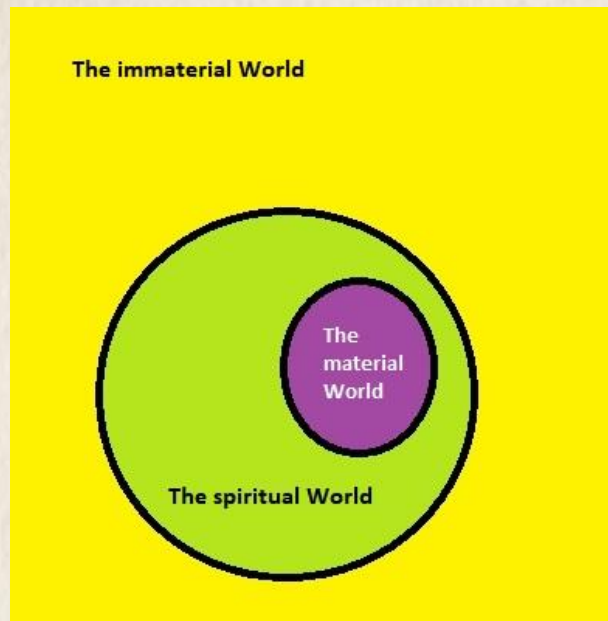
**The 1<sup>st</sup> phase** – position of the conventional “boundary” between one’s “material” and “immaterial” Worlds till the beginning of spiritual practice.



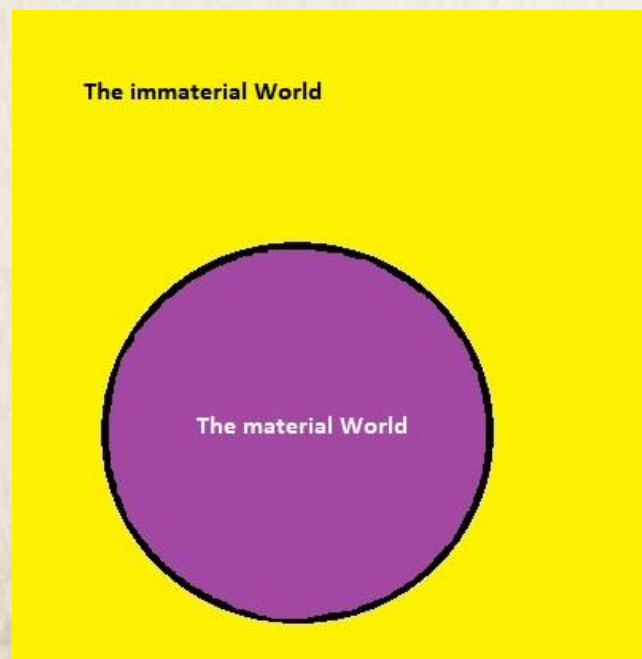


# -13-

**The 2<sup>nd</sup> phase** – the beginning of one`s spiritual practice leads to manifestation (perception) of the earlier “invisible” objects, process and phenomena from “the immaterial” World.



**The 3<sup>rd</sup> phase** – manifested objects, processes and phenomena of one`s Spiritual World become a part of his “material” World.





These pictures demonstrate: when individual is involved in spiritual practice, the range of manifested values of various physical quantities remains continuous before and after usage of the corresponding practices that allows to manifest various objects, processes and phenomena as sensations without any “distortions”. Researchers always observe one and the same result when one uses spiritual practices for his spiritual growth – a continuous expansion of the ranges of various physical quantities manifested by his body.

**SPIRITUAL practice –  
one`s method of cognizing the World (in the broadest  
sense of this word) that brings into effect a  
continuous (without any breakes) expansion of the  
ranges of different physical quantities used during  
manifestation (perception).**

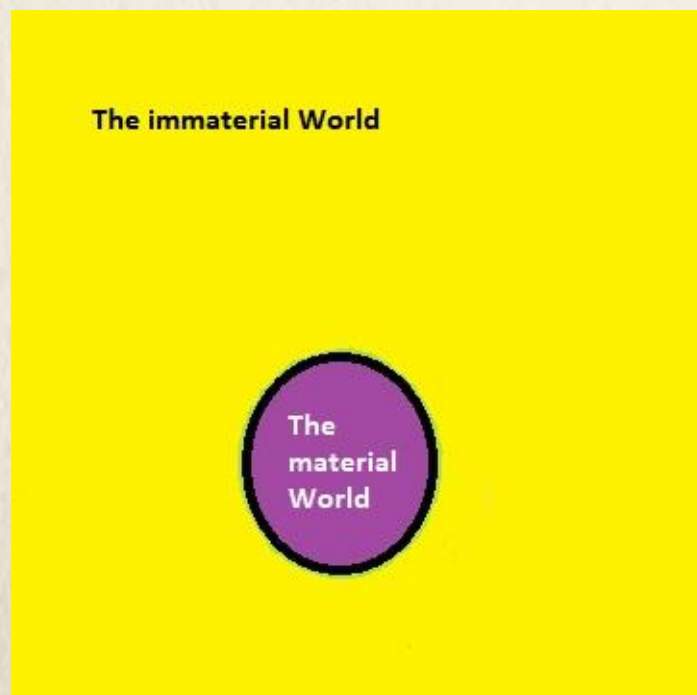
**The 2<sup>nd</sup> variant – “a random” or “nonrandom” posttraumatic syndrome.**

We can depict a change in the boundaries of three Worlds of individual (“material”, “immaterial” and spiritual ones) in the case of using “a random” or “specially created” “posttraumatic” syndrome as the method of cognizing the World (in the broadest sense of this word).



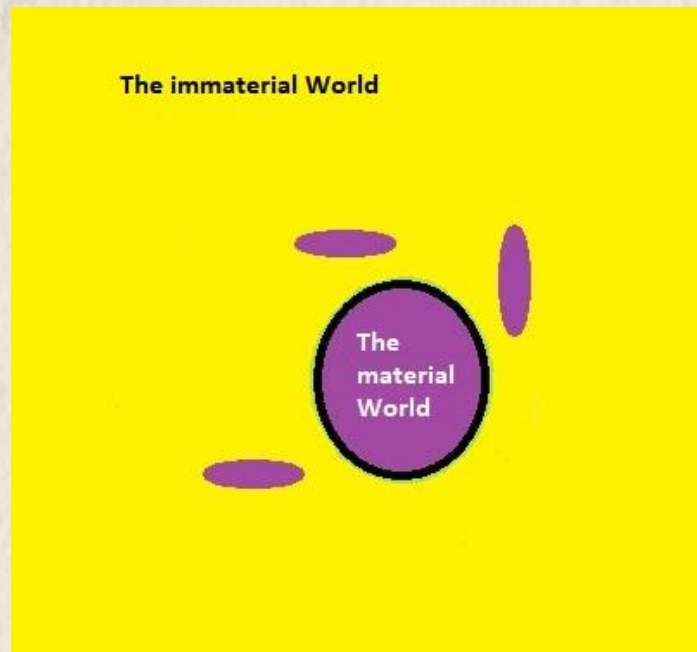
The mentioned below conventional pictures illustrate the main difference between such processes as using spiritual practice and suffering from post-traumatic syndrome. It's obvious that when individual uses post-traumatic syndrome, the manifested range of various physical quantities is irregular that ultimately leads to appreciable misrepresentation of information during manifestation (perception) of different objects, processes, and phenomena as sensations. The reason is completely understandable. It's an injury. The injury of receptors (sensors), central nervous system (information receiving and transmission channels) or the Brain (information processing and control unit) will always lead to altered perception. Any researcher can easily verify the given data in the modern laboratory environments.

**The 1<sup>st</sup> phase** – position of “the boundary” between one's “material” and “immaterial” Worlds till injury.





**The 2<sup>nd</sup> phase** - the manifested objects of one's "immaterial" World become a part of his "material" World; an injury leads to discontinuous expansion of the various ranges used during manifestation (perception).



**The 3<sup>rd</sup> variant** – using various "additional illuminations" and "lightnings".

Using various "additional illuminations" and "lightnings" helps to reinforce the basic method and the individual's body obtains the ability to manifest even wider ranges of different physical quantities. But ... only if using it as an additional method to the basic one, namely to SPIRITUAL practice.

In such case will be preserved the uniformity of expansion of the perception (manifestation) "boundaries" and will be reduced the probability of improper depictions.



**The 4<sup>th</sup> variant – using technical means with ability to function in the wider ranges of various physical quantities.**

According to Tsiolkovsky, the current tendency of development is extremely dangerous for the humankind. Without appropriate SPIRITUAL growth, without understanding philosophy of the Universe, without noticing the interconnection between all objects people start using technical means in order to work in very wide ranges of different physical quantities and absolutely don't understand WHAT THEY actually "SEE". Thus, they will just "cut their own throats", "play with fire", etc.

At some point you begin to understand why some researchers claim: "There were already lots of 'peoples' on the Earth".

*"There are forces stronger than "all existing". So it goes! These are the forces that prevent you from thinking about unclear questions and puzzling them out. Don't argue, maybe, it's even good for the humankind prosperity. A close encounter with some things can be detrimental to people.*

*Just imagine that we would suddenly learn to turn substance into energy, that is, we would embody Einstein's formula into reality beforehand. Then — taking into account the human morality — give up all hope, people will get their heads blown off. There would be hell on earth: people would have shown their pigeon mentality — no stone would be left upon another, even not to speak of people. The humankind would be destroyed! Remember, once we spoke about the end of the world. It is in the immediate vicinity of us, the only way out is the triumph of mind!*

*This was where prohibiting is needed — a stringent prohibition to investigate the structure of matter. On the other hand, prohibiting to study this area of physics will lead to the non-usage of a rocket, because it needs an atomic fuel. And the non-usage of a rocket means stop studying the space environment ... Everything is related. So, the progress is impossible without risk! But **the humankind actually risks everything.***

**Konstantin Tsiolkovsky**

[“The Theory of Cosmic Eras”](#)



## 1.5. The terminology for describing the SPIRITUAL Worlds

The terminology for describing “the material” Worlds is well known and widely used by the scientific community, so, we have no need to analyze these terms in detail.

The problem of many researchers who study the SPIRITUAL WORLD lies in the usage of invented by them words, and only they understand them as well. There are lots of such terms and we can list some of them, but it will be useless for the reader.

**THE SPIRITUAL World –  
a part of one`s material World, and, as a result,  
the terms for describing spiritual and material  
Worlds can coincide.**

Thus, such words as object, process, phenomenon, body, flesh, organism, biosphere, quantity, range and others are suitable for describing both “material” and SPIRITUAL Worlds.

## 1.6. The evolution of the SPIRITUAL Worlds

### **EVOLUTION – a developmental process followed by the constant quality changes.**

*“Evolution is change in the heritable characteristics of biological populations over successive generations. Evolutionary processes give rise to biodiversity at every level of biological organisation, including the levels of species, individual organisms, and molecules.”*

EVOLUTION of “the material” objects, processes and phenomena means EVOLUTION of objects, processes and phenomena of the Universe, which one is able to manifest as sensations.

Individuals are already able to observe these processes on a continuing basis.

As a rule, scientists use various technical means such as optical telescopes, radio telescopes, X-ray telescopes, microscopes, colliders, etc. exactly for this purpose.

If there is a long distance to certain objects, individuals see their “past”, i.e. that period of the object’s evolution, when the light from the telescope or any signal of a special receiver glassed from it. The time of this signal passing from the object of the Universe to the individual can be measured by huge time



intervals of thousands, millions and even billions of years. As sensitivity of the instruments and the range of perception increases, the time of signal passing will constantly increase, reaching the lifecycle of the Universe at first, and then even exceeding it ... We can assume that there are lots of similar to ours Universes, we just don't see them ... They are far away from us ... ☺

**EVOLUTION of the Universe –  
a natural process of the Universe development.**





**The distance to the object in this photo is approximately 7,500 light-years.  
This photo was taken by the Hubble telescope.**

*“Matter becomes more complicated with the course of time. Without this process, we wouldn't have the molecules of 90 substances we know.*

*Does this complication stop one day? It can fluctuate, but in general, it must go forward. The oscillation consists in periodic complication and decomposition of the molecules, but complication takes place, although it's an extremely slow process.*





**The height of the object is 9.5 light years or about 90,000,000,000,000 kilometers. This photo taken by the Hubble telescope.**

*So, with the course of time will be created 'simple' atoms of 300, 400, 1000000, etc. electrons and protons. Such bodies will be less elastic but denser. Denser suns and planets will be created from these bodies that will be inhabited by denser plants and animals."*

**Konstantin Tsiolkovsky**

**"Other More Dispersed Matter, Other Worlds, Other Beings"**

**"Scientific Ethnics"**

**1928**

If we take into account that we can use the same terminology for describing "the material" and "immaterial" Worlds, and the fact that there is no clear boundary between these two Worlds, then we can hypothesize that all objects of "the immaterial" and spiritual Worlds evolve over time as objects of "the material" World.

**With the course of time, EVOLUTION of the objects from the immaterial and spiritual Worlds is the same evolutionary process as of the objects from the material World.**



## 2. TIME and the units to measure it

The modern units of time measurement are based on the periods of the Earth rotation on its axis and around the Sun, as well as revolution of the Moon around the Earth. This choice of such units is determined by both historical and practical considerations: the need to coordinate the people activities with the change of day and night or seasons.

*“Time is the indefinite continued progress of existence and events that occur in apparently irreversible succession from the past through the present to the future. Time is a component quantity of various measurements used to sequence events, to compare the duration of events or the intervals between them, and to quantify rates of change of quantities in material reality or in the conscious experience. Time is often referred to as a fourth dimension, along with three spatial dimensions.*

*Time has long been an important subject of study in religion, philosophy, and science, but defining it in a manner applicable to all fields without circularity has consistently eluded scholars. Nevertheless, diverse fields such as business, industry, sports, the sciences, and the performing arts all incorporate some notion of time into their respective measuring system.*

*In the quantitative (metrological) sense, the concept of time has three aspects:*

- The coordinates of event on the time axis. In practice, it's a current time: the calendar, a mathematical tool for organising intervals of time, and the time of day determined by any number system (scale) of time (examples: a local time, a universal coordinated time);*
- A relative time, time interval between two events;*
- A subjective parameter when comparing several different frequency processes.”*



*“Historically, a second was defined by reference to longer periods of time – minutes, hours and days – e.g. as  $1/86,400$  of a mean solar day (one day being  $24 \text{ hours} \times 60 \text{ minutes} \times 60 \text{ seconds} = 86,400 \text{ seconds}$ ). This is sometimes known as an ephemeris second (an ephemeris is a table showing the positions of the heavenly bodies on various dates in a regular sequence.*

*More commonly, outside of purely scientific usage, other units are used for longer periods of time. Although technically “non-SI” units, because they do not use the decimal system, these units are officially accepted for use with the International System:*

- *minute (60 seconds);*
- *hour (60 minutes, or 3,600 seconds);*
- *day (24 hours, or 86,400 seconds);*
- *week (7 days, or 604,800 seconds);*
- *month (28-31 days, or 2,419,200-2,678,400 seconds);*
- *year (about 365.25 days, or about 31,557,600 seconds).”*

*“A day, a unit of time, is approximately the period of time during which the Earth completes one rotation with respect to the Sun (solar day). In 1960, the second was redefined in terms of the orbital motion of the Earth in year 1900 and was designated the SI base unit of time. The unit of measurement “day”, was redefined as 86 400 SI seconds and symbolized d. In common usage, it is either an interval equal to 24 hours or daytime, the consecutive period of time during which the Sun is above the horizon.”*

*“To measure longer time intervals, we use such units of time as year, month, and week. A year is the orbital period of the Earth moving in its orbit around the Sun. Due to the Earth's axial tilt, the course of a year sees the passing of the*



seasons, marked by changes in weather, the hours of daylight, and, consequently, vegetation and soil fertility.

*A calendar year is an approximation of the number of days of the Earth's orbital period as counted in a given calendar. The Gregorian, or modern, calendar, presents its calendar year to be either a common year of 365 days or a leap year of 366 days, as do the Julian calendars; see below. For the Gregorian calendar the average length of the calendar year (the mean year) across the complete leap cycle of 400 years is 365.2425 days. In a Gregorian mean year, there are 365.2425 days, and thus exactly  $52 \frac{71}{400}$  or 52.1775 weeks (unlike the Julian year of 365.25 days or  $52 \frac{5}{28} \approx 52.1786$  weeks, which cannot be represented by a finite decimal expansion).*

*A week is a time unit equal to seven days. It is the standard time period used for cycles of rest days in most parts of the world, mostly alongside—although not strictly part of — the Gregorian calendar.”*

## 2.1. The main units of time measurement

<b>Gigayear</b>	1,000,000,000 years
<b>Thousand years (Millenium)</b>	1,000 years
<b>Century</b>	100 years
<b>Indiction</b>	15 years
<b>Decennary</b>	10 years
<b>Year</b>	365/366 days
<b>Quarter of the year</b>	3 months or $\frac{1}{4}$ of a year
<b>Month</b>	3 decades or 30 days
<b>Decade</b>	10 days
<b>Week</b>	7 days
<b>Day</b>	$\frac{1}{7}$ of a week
<b>Hour</b>	$\frac{1}{24}$ days
<b>Minute</b>	$\frac{1}{60}$ of an hour
<b>Second</b>	$\frac{1}{60}$ of a minute
<b>Tierce</b>	$\frac{1}{60}$ of a second
<b>Centisecond</b>	$10^{-2}$ seconds
<b>Millisecond</b>	$10^{-3}$ seconds (a free travel of bullet within a short space of time)
<b>Microsecond</b>	$10^{-6}$ seconds (isthmus behavior during a droplet detachment)
<b>Nanosecond</b>	$10^{-9}$ seconds (vacancy diffusion at the crystal surface)
<b>Picosecond</b>	$10^{-12}$ seconds (a lattice vibration, a chemical bond formation and opening)
<b>Femtosecond</b>	$10^{-15}$ seconds (oscillation of the atoms, EM-fields in a light wave)
<b>Attosecond</b>	$10^{-18}$ seconds (the period of EM-fields` oscillation of the X-ray spectrum, electron dynamics of the inner shells of the multielectron atoms)
<b>Zeptosecond</b>	$10^{-21}$ seconds (nuclear reaction dynamics)
<b>Yoktosecond</b>	$10^{-24}$ seconds (generation/decay of the unstable elementary particles)



## 2.2. The geologic time scales

<b>Age of the Universe</b>	13,798 ± 0,037 billion years
<b>Eon</b>	Eons are the largest intervals of geologic time and are hundreds of millions of years in duration.
<b>Era</b>	Eons are divided into smaller time intervals known as eras. For example, the Phanerozoic is divided into three eras: Cenozoic, Mesozoic and Paleozoic.
<b>Epoch</b>	Finer subdivisions of time are possible, and the periods of the Cenozoic are frequently subdivided into epochs. Subdivision of periods into epochs can be done only for the most recent portion of the geologic time scale. This is because older rocks have been buried deeply, intensely deformed and severely modified by long-term earth processes. As a result, the history contained within these rocks cannot be as clearly interpreted.
<b>Period</b>	Eras are subdivided into periods. The events that bound the periods are widespread in their extent but are not as significant as those which bound the eras.
<b>Age</b>	The interval of geologic time equivalent to the chronostratigraphic unit 'stage'. Ages are subdivisions of epochs and may themselves be subdivided into chrons. It's a periodization, the process of categorizing the past into discrete named blocks of time.

**Stratigraphy** is a branch of geology concerned with the study of rock layers (strata) and layering (stratification). It is primarily used in the study of sedimentary and layered volcanic rocks. Stratigraphy has two related subfields:

lithologic stratigraphy or lithostratigraphy, and biologic stratigraphy or biostratigraphy.

## 2.3. The historical time measurement

<b>Era</b>	The highest level for the organization of the measurement of time. A calendar era indicates a span of many years which are numbered beginning at a specific reference date (epoch).
<b>Epoch</b>	A historic period, "it's shorter than an era".
<b>Age</b>	One hundred years.



## 2.4. Standards of Time

*“The second (s) is the SI base unit. A minute (min) is 60 seconds in length, and an hour is 60 minutes in length. A day is 24 hours or 86,400 seconds in length.*

*The Mean Solar Time system defines the second as  $1/86,400$  of the mean solar day, which is the year-average of the solar day. The solar day is the time interval between two successive solar noons, i.e., the time interval between two successive passages of the Sun across the local meridian. The local meridian is an imaginary line that runs from celestial north pole to celestial south pole passing directly over the head of the observer. At the local meridian the Sun reaches its highest point on its daily arc across the sky.*

*In 1874 the British Association for the Advancement of Science introduced the CGS (centimetre/gramme/second system) combining fundamental units of length, mass and time. The second is “elastic”, because tidal friction is slowing the earth’s rotation rate. For use in calculating ephemerides of celestial motion, therefore, in 1952 astronomers introduced the “ephemeris second”, currently defined as the fraction  $1/31,556,925.9747$  of the tropical year for 1900 January 0 at 12 hours ephemeris time.*

*The CGS system has been superseded by the *Système international*. The SI base unit for time is the SI second. The International System of Quantities, which incorporates the SI, also defines larger units of time equal to fixed integer multiples of one second (1 s), such as the minute, hour and day. These are not part of the SI but may be used alongside the SI. Other units of time such as the month and the year are not equal to fixed multiples of 1 s, and instead exhibit significant variations in duration.*

*The second is the duration of 9,192,631,770 periods of the radiation corresponding to the transition between the two hyperfine levels of the ground state of the caesium 133 atom.*



*At its 1997 meeting, the CIPM affirmed that this definition refers to a caesium atom in its ground state at a temperature of 0 K.*

*The current definition of the second, coupled with the current definition of the metre, is based on the special theory of relativity, which affirms our spacetime to be a Minkowski space. The definition of the second in mean solar time, however, is unchanged.*

*While in theory, the concept of a single worldwide universal time-scale may have been conceived of many centuries ago, in practicality the technical ability to create and maintain such a time-scale did not become possible until the mid-19th century. The timescale adopted was Greenwich Mean Time, created in 1847. A few countries have replaced it with Coordinated Universal Time, UTC”.*



## 2.5. The geochronological scale of the Earth

*“The geologic time scale (GTS) is a system of chronological dating that relates geological strata (stratigraphy) to time. It is used by geologists, paleontologists, and other Earth scientists to describe the timing and relationships of events that have occurred during Earth's history. The tables of geologic time spans, presented here, agree with the nomenclature, dates and standard color codes set forth by the International Commission on Stratigraphy (ICS).*

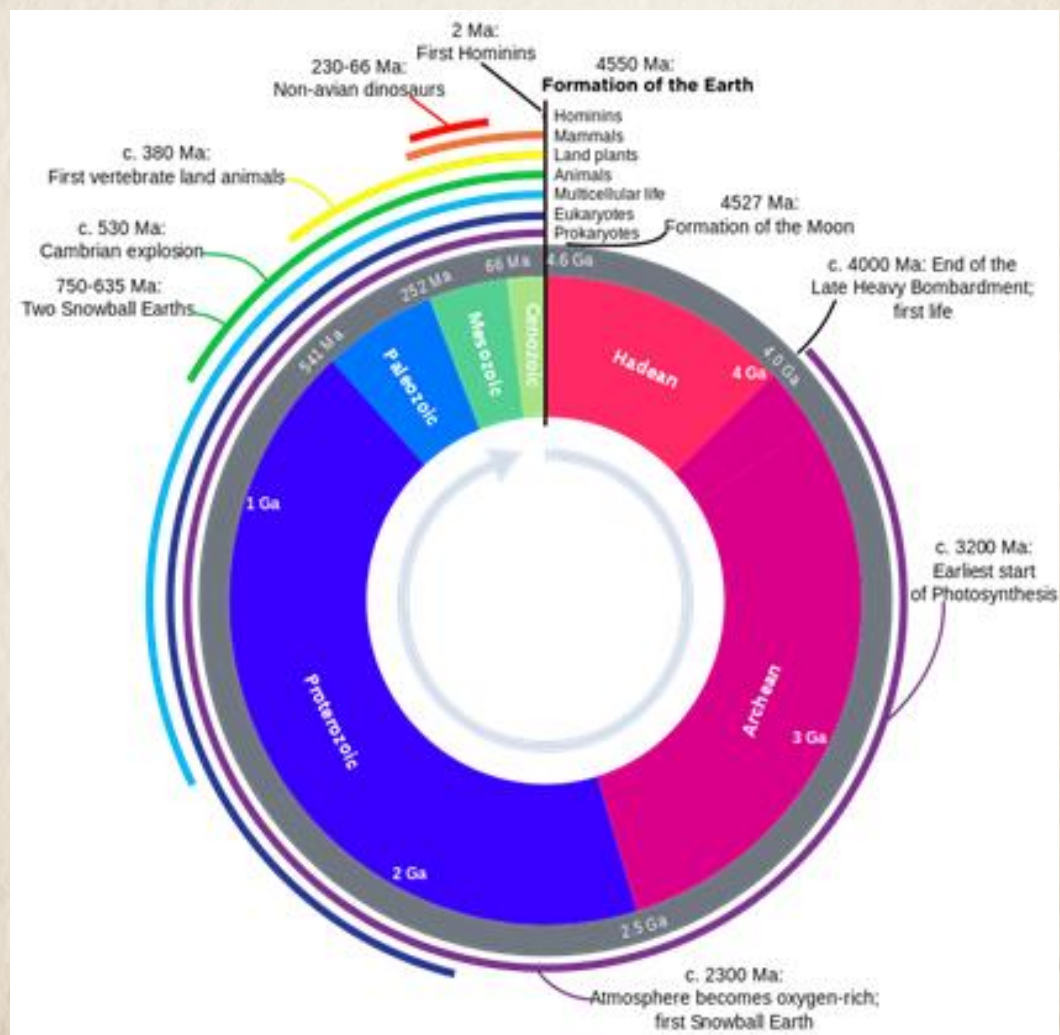
*Evidence from radiometric dating indicates that Earth is about 4.54 billion years old. The geology or deep time of Earth's past has been organized into various units according to events which took place. Different spans of time on the GTS are usually marked by corresponding changes in the composition of strata which indicate major geological or paleontological events, such as mass extinctions. For example, the boundary between the Cretaceous period and the Paleogene period is defined by the Cretaceous – Paleogene extinction event, which marked the demise of the non-avian dinosaurs and many other groups of life. Older time spans, which predate the reliable fossil record (before the Proterozoic eon), are defined by their absolute age.*

*Geologic units from the same time but different parts of the world often look different and contain different fossils, so the same time-span was historically given different names in different locales. For example, in North America, the Lower Cambrian is called the Waucoban series that is then subdivided into zones based on succession of trilobites. In East Asia and Siberia, the same unit is split into Alexian, Atdabanian, and Botomian stages. A key aspect of the work of the International Commission on Stratigraphy is to reconcile this conflicting terminology and define universal horizons that can be used around the world.*

Era	Period	Epoch	Plant and Animal Development	
Cenozoic	Quaternary	Holocene (.01)	Humans develop	
		Pleistocene (1.8)		
	Tertiary	Pliocene (5.3)	“Age of mammals”	
		Miocene (23.8)		
		Oligocene (33.7)		
		Eocene (54.8)	Extinction of dinosaurs and many other species.	
		Paleocene (65.0)		
Mesozoic	Cretaceous (144)	“Age of Reptiles”	First flowering plants	
	Jurassic (206)		First birds	
	Triassic (248)			Dinosaurs dominant.
Paleozoic	Permian (290)	“Age of Amphibians”	Extinction of trilobites and many other marine animals	
	Carboniferous: Pennsylvanian (323)		First reptiles	
	Carboniferous: Mississippian (354)			Large coal swamps
	Devonian (417)	“Age of Fishes”	Large Amphibians abundant.	
			First insect fossils	
	Silurian (443)	“Age of Invertebrates”	Fishes dominant	
	First land plants			
	Ordovician (490)	“Age of Invertebrates”	First fishes	
	Cambrian (540)			



			Trilobites dominant
			First organisms with shells
Precambrian - comprises about 88% of geologic time (4500)			First multicelled organisms
			First one-celled organisms
			Origin of Earth





## INTERNATIONAL STRATIGRAPHIC CHART

International Commission on Stratigraphy



Phanerozoic						
Enothem Eon	Enothem Era	System Period	Series Epoch	Stage Age	Age Ma	GSSP
Cenozoic	Quaternary	Holocene				
		Pleistocene	Upper	0.0117	👉	
			"Ionian"	0.126		
			Calabrian	0.781		
		Pliocene	Gelasian	1.806		
			Piacenzian	2.588		
			Zanclean	3.600		
		Miocene	Messinian	5.332	👉	
			Tortonian	7.246	👉	
			Serravallian	11.608	👉	
	Langhian		13.82	👉		
	Burdigalian		15.97	👉		
	Aquitanian		20.43	👉		
	Paleogene	Oligocene	Chattian	23.03		
			Rupelian	28.4 ± 0.1	👉	
			Priabonian	33.9 ± 0.1	👉	
		Eocene	Bartonian	37.2 ± 0.1		
			Lutetian	40.4 ± 0.2		
			Ypresian	48.6 ± 0.2	👉	
		Paleocene	Thanetian	55.8 ± 0.2	👉	
			Selandian	58.7 ± 0.2	👉	
			Danian	~ 61.1	👉	
Maastrichtian			65.5 ± 0.3	👉		
Campanian			70.6 ± 0.6	👉		
Santonian			83.5 ± 0.7	👉		
Cretaceous	Upper	Coniacian	85.8 ± 0.7	👉		
		Turonian	~ 88.6	👉		
		Cenomanian	93.6 ± 0.8	👉		
		Albian	99.6 ± 0.9	👉		
		Aptian	112.0 ± 1.0	👉		
		Barremian	125.0 ± 1.1	👉		
	Lower	Hauterivian	130.0 ± 1.5	👉		
		Valanginian	~ 133.9	👉		
		Berriasian	140.2 ± 3.0	👉		
		Bemiasian	145.5 ± 4.0	👉		
Mesozoic	Jurassic	Upper	Tithonian	145.5 ± 4.0	👉	
			Kimmeridgian	150.8 ± 4.0	👉	
			Oxfordian	~ 155.6	👉	
		Middle	Callovian	161.2 ± 4.0	👉	
			Bathonian	164.7 ± 4.0	👉	
			Bajocian	167.7 ± 3.5	👉	
		Lower	Aalenian	171.6 ± 3.0	👉	
			Toarcian	175.6 ± 2.0	👉	
			Pliensbachian	183.0 ± 1.5	👉	
		Triassic	Upper	Sinemurian	189.6 ± 1.5	👉
				Hettangian	196.5 ± 1.0	👉
				Rhaetian	199.6 ± 0.6	👉
	Middle		Norian	203.6 ± 1.5	👉	
			Carnian	216.5 ± 2.0	👉	
			Ladinian	~ 228.7	👉	
	Permian	Lower	Anisian	237.0 ± 2.0	👉	
			Olenekian	~ 245.9	👉	
			Induan	249.5 ± 0.4	👉	
		Lopingian	Changhsingian	251.0 ± 0.4	👉	
			Wuchiapingian	253.8 ± 0.7	👉	
			Capitanian	259.0 ± 0.8	👉	
	Paleozoic	Carboniferous	Upper	Guadalupian	260.4 ± 0.7	👉
				Wordian	265.8 ± 0.7	👉
				Roadian	268.0 ± 0.7	👉
Middle			Kungurian	270.6 ± 0.7	👉	
			Artinskian	275.6 ± 0.7	👉	
			Asselien	284.4 ± 0.7	👉	
Pennsylvanian		Upper	Sakmarian	294.6 ± 0.8	👉	
			Asselien	299.0 ± 0.8	👉	
			Gzhelian	303.4 ± 0.9	👉	
		Lower	Kasimovian	307.2 ± 1.0	👉	
			Moscovian	311.7 ± 1.1	👉	
			Bashkirian	318.1 ± 1.3	👉	
Paleozoic	Silurian	Upper	Serpukhovian	328.3 ± 1.6	👉	
			Visean	345.3 ± 2.1	👉	
			Tournaisian	359.2 ± 2.5	👉	
		Middle				
	Devonian	Lower	Famennian	359.2 ± 2.5	👉	
			Frasnian	374.5 ± 2.6	👉	
			Givetian	385.3 ± 2.6	👉	
		Middle	Eifelian	391.8 ± 2.7	👉	
			Emsian	397.5 ± 2.7	👉	
			Pragian	407.0 ± 2.8	👉	
Paleozoic	Ordovician	Lower	Lochkovian	411.2 ± 2.8	👉	
				416.0 ± 2.8	👉	
			Pridoli	418.7 ± 2.7	👉	
		Middle	Ludfordian	421.3 ± 2.6	👉	
			Gorstian	422.9 ± 2.5	👉	
			Wenlock	426.2 ± 2.4	👉	
	Cambrian	Upper	Sheinwoodian	428.2 ± 2.3	👉	
			Telychian	430.0 ± 1.9	👉	
			Aeronian	439.0 ± 1.8	👉	
		Middle	Rhuddanian	443.7 ± 1.5	👉	
			Himantian	445.6 ± 1.5	👉	
			Darnwillian	455.8 ± 1.6	👉	
Paleozoic	Silurian	Lower	Sandbian	460.9 ± 1.6	👉	
			Darnwillian	468.1 ± 1.6	👉	
			Dapingian	471.8 ± 1.6	👉	
		Middle	Floian	478.6 ± 1.7	👉	
			Tremadocian	488.3 ± 1.7	👉	
			Stage 10	~ 492 *	👉	
	Furongian	Stage 9	~ 496 *	👉		
			Paibian	~ 499	👉	
			Guzhangian	~ 503	👉	
		Series 3	Durhamian	~ 506.5	👉	
			Stage 5	~ 510 *	👉	
			Stage 4	~ 515 *	👉	
Paleozoic	Ordovician	Lower	Stage 3	~ 521 *	👉	
			Stage 2	~ 528 *	👉	
			Fortunian	542.0 ± 1.0	👉	
		Middle				
	Cambrian	Upper				
		Middle				

Subdivisions of the global geologic record are formally defined by their lower boundary. Each unit of the Phanerozoic (~542 Ma to Present) and the base of the Ediacaran are defined by a basal Global Boundary Stratotype Section and Point (GSSP) 📍, whereas Precambrian units are formally subdivided by absolute age (Global Standard Stratigraphic Age, GSSA). Details of each GSSP are posted on the ICS website ([www.stratigraphy.org](http://www.stratigraphy.org)).

Numerical ages of the unit boundaries in the Phanerozoic are subject to revision. Some stages within the Cambrian will be formally named upon international agreement on their GSSP limits. Most sub-Series boundaries (e.g., Middle and Upper Aptian) are not formally defined.

Colors are according to the Commission for the Geological Map of the World ([www.cgmw.org](http://www.cgmw.org)).

The listed numerical ages are from "A Geologic Time Scale 2004", by F.M. Gradstein, J.G. Ogg, A.G. Smith, et al. (2004, Cambridge University Press) and "The Concise Geologic Time Scale" by J.G. Ogg, G. Ogg and F.M. Gradstein (2008).

This chart was drafted by Gabi Ogg. Intra Cambrian unit ages with \* are informal, and awaiting ratified definitions.

Copyright © 2010 International Commission on Stratigraphy



3. The hypothetic hierarchical model of the World`s (in the broadest sense of this word) objects
- 3.1. A FRAME – the unit of time measurement, firstly introduced by K. Tsiolkovsky

Even such time periods as EPOCHES, ERAS and GIGAYEARS aren`t enough for us to consider and analyze the evolution of various objects. So, we introduce such a concept as FRAME that was used by K. E. Tsiolkovsky for the first time. But the author slightly modified this word in order to gain the purposes of this research.

**A FRAME –  
the historic period of a longer lifecycle than such of  
the Universe (the World of human beings).**

*“Thus, we divide the Worlds into frames. These frames are separated from each other by infinite times. It`s clear that these Worlds are beyond the reach, they are incomprehensible even for each other.”*

**Konstantin Tsiolkovsky**

**[“The Organization of Invisible Worlds. Their life”](#). [“Scientific Ethnics”](#)**

**1928**

We introduce such unit of time measurement as FRAME to gain the purposes of our research:

**A FRAME –  
the unit of time measurement equal to 14 milliards of  
earthyears.**

I choose such a value as FRAME for a reason.

**13,798 ± 0,037 billion years** is an approximate age of the Universe (the World of human beings) in accordance with the results of recent scientific researches.

Our further research requires better consideration of the various hierarchies of objects based on the FRAME system of ranks.

This will allow us to develop appropriate hypotheses according to objects' interaction whose duration of the evolution is measured by FRAMES.

Therefore, for the purposes of our further research, we use the following definition:



## **A FRAME —**

**a rank in the specially created hierarchy of objects that allows us to conditionally (by duration of the object's evolution) separate objects of the Universe (the World of human beings) from objects of other Worlds, the evolutionary period of which many times exceeds age of the Universe.**

### **3.2. The objects whose period of the evolution doesn't exceed age of the Universe**

We will conditionally refer to this category objects whose evolution individual is able to describe, using time intervals adopted by the modern human society:

- Eon
- Era
- Epoch
- Millenium
- Century (hundred years)
- Decade
- Year
- Decennary
- Month
- Ten-day period
- Week
- Day
- Hour

- Minute
- Second
- Tierce
- Centisecond
- Millisecond
- Microsecond
- Nanosecond
- Picosecond
- Femtosecond
- Attosecond
- Zeptosecond
- Yoctosecond



### 3.3. The objects whose period of the evolution exceeds age of the Universe

**We will refer to the objects whose period of the evolution exceeds age of the Earth such objects, the evolution of which individual is able to describe, using such time intervals as FRAMES.**

**A FRAME** (rank) is the designation of the object's place in a hierarchically organized system of objects (according to duration of their evolution), which makes it possible to CONVENTIONALLY consider that:

- THE FRAME of “**0**” (zero) rank includes any objects of the Universe that have been created throughout its evolution, i.e. during 14,000,000,000 years since “the Big Bang” and they are representatives of “the MATERIAL” World of the humankind; exactly this World is a place for almost all people where they can cognize and modify various objects, processes and phenomena, i.e. where they are able to create.
- THE FRAME of “**-1**” (minus one) rank includes any objects of the World (in the broadest sense of this word) that have been created during

14,000,000,000 years until “the Big Bang” and duration of their evolution, as a result, equals from  $14 \cdot 10^9$  to  $28 \cdot 10^9$  years.

- THE FRAME of “-n” (minus n) rank includes any objects of the World (in the broadest sense of this word) that have been created during “**14,000,000,000 years** x n” until “the Big Bang”. Thus, we can assume that duration of the evolution of the objects of this frame is **n+1** times more than the maximum evolution period of any objects in the Universe.



### 3.4. The objects of the neighbor “immaterial” World

Let`s imagine that any objects from “0” to “-k” ranks can potentially be transferred by someone to their “material” (SPIRITUAL) World. Let`s call these ranks as **the NEIGHBOR “immaterial” World**:

**THE NEIGHBOR immaterial World –  
a part of the World (in the broadest sense of this  
word) *an individual is able to potentially manifest as*  
his sensations and reflect then as various objects,  
processes and phenomena.**

### 3.5. The objects of the DISTANT “immaterial” World

Let`s imagine that individual cannot cognize the objects from “-k” to “-∞” ranks due to physical limitations that prevent his BODY from manifestation (the parameters of receptors, receiving-transmission channels, processing unit) and the parameters of devices based on “a substance”.

Let`s call these ranks as **the DISTANT “immaterial” World**:

**THE DISTANT immaterial World –  
a part of the World (in the broadest sense of this  
word) *an individual is unable to manifest.***



## 3.6. The conventional hierarchy of the objects from the World (in the broadest sense of this word) according to possibility to manifest them

THE FRAMES (ranks)	The Worlds
0	<p style="text-align: center;"><b>The Universe</b>  <b>(The World of human beings)</b>  <b>“The material” World</b></p>
↔	↔
	<p style="text-align: center;"><b>THE NEIGHBOR “immaterial” World</b></p> <p style="text-align: center;">The individuals of the Universe are potentially able to manifest the states of SOMETHING from this World as their sensations and reflect them as various objects, processes and phenomena. As a result, a part of this World can become a constituent of “the material” (SPIRITUAL) World of individual.</p>
↔	↔
-k	...
↔	↔
	<p style="text-align: center;"><b>THE DISTANT “immaterial” World</b></p> <p style="text-align: center;">The individuals of the Universe aren't able to manifest the states of SOMETHING from this World as their sensations and reflect them as various objects, processes and phenomena due to physical limitations that prevent their BODIES from manifestation and due to the parameters of devices based on “a substance”.</p>
-∞	↔
	...

I would like to clarify the interpretation of such words as NEIGHBOR and DISTANT in relation to “the immaterial” World.

We mean a distance between the values of different ranges of physical quantities and the values an individual is able to manifest as sensations, and then reflect them as different objects, processes and phenomena.

Every type of the physical quantities has its own values.



## 3.7. The conventional hierarchy of the objects from the World (in the broadest sense of this word) according to their density

The density of objects	The Worlds
"The dense" objects	<p style="text-align: center;">... ↔</p> <p style="text-align: center;"><b>THE DISTANT "dense" "immaterial" World</b></p> <p style="text-align: center;">The World, the objects of which individuals of the Universe aren't able to cognize due to physical limitations that prevent their bodies from manifestation and due to the parameters of devices based on "a substance".</p>
...	<p style="text-align: center;">↔</p> <p style="text-align: center;">...</p> <p style="text-align: center;">↔</p>
...	<p style="text-align: center;"><b>THE NEIGHBOR "dense" "material" World</b></p> <p style="text-align: center;">The World where objects of the Universe are considered as SPIRITS. In the case of appropriate spiritual growth, the objects of this World will manifest the objects of the Universe as sensations and reflect them as various objects, processes and phenomena. As a result of this cognition, the objects of the Universe will be able to become the parts of their "material" (spiritual) World.</p> <p style="text-align: center;">↔</p>
...	<p style="text-align: center;"><b>The Universe</b> <b>(The World of human beings)</b> <b>"The material" World</b></p> <p style="text-align: center;">↔</p>
...	<p style="text-align: center;"><b>THE NEIGHBOR "non-dense" "material" World</b></p> <p style="text-align: center;">The World, the objects of which individuals of the Universe can consider as spirits, i.e. they can manifest them as sensations and reflect then as various objects, processes and phenomena. As a result of cognition, these objects can become the parts of "the material" (spiritual) Worlds of individuals of the Universe.</p> <p style="text-align: center;">↔</p> <p style="text-align: center;">...</p> <p style="text-align: center;">↔</p>
...	<p style="text-align: center;"><b>THE DISTANT "non-dense" "immaterial" World</b></p> <p style="text-align: center;">The World, the objects of which individuals of the Universe aren't able to cognize due to physical limitations that prevent their bodies from manifestation and due to the parameters of devices based on "a substance".</p>
"The dispersed" objects	<p style="text-align: center;">↔</p> <p style="text-align: center;">...</p>

I can suppose that there are lots of objects from the NEIGHBOR “dense” and NEIGHBOR “non-dense” “immaterial” Worlds. We are able to cognize them, individuals of the Universe can potentially manifest them.

I can suppose that there are lots of objects from the DISTANT “dense” and DISTANT “non-dense” “immaterial” Worlds. But we cannot even talk about them, because individuals of the Universe have no ability to manifest them.

*“Now let`s discuss the past. It`s infinite as well as the future. Let`s imagine distant time that is in the decillion degree and is decillion years more than the current. At that time the particles (molecules) were simpler, the substance was less complex, less dense and more elastic. It was the structure of “the dead” celestial bodies and overwhelmingly lighter living organisms. Their bodies differed from the bodies of our animals by little and dispersed matter, precisely because of such structure they can be called immaterial, “spiritual” beings”.*

**Konstantin Tsiolkovsky**

[“Other More Dispersed Matter, Other Worlds, Other Beings”](#)

[“Scientific Ethnics”](#)

1928

*“The future time has no limits. Throughout decillions of years, maybe even throughout decillions in the decillion degree years will be created such dense celestial bodies and beings that we, in comparison, can be easily taken to be material “spirits”, to be practically bodiless beings”.*

**Konstantin Tsiolkovsky**

[“Other More Dispersed Matter, Other Worlds, Other Beings”](#)

[“Scientific Ethnics”](#)

1928



## 3.8. The conventional hierarchy of the objects from the NEIGHBOR “material” World according to their density

The density of objects	The Worlds	The name of matter
“The dense” objects	$\leftrightarrow$	$\leftrightarrow$
...	<p><b>THE NEIGHBOR “dense” “material” World</b></p> <p>The World where objects of the Universe can be considered as SPIRITS. In the case of appropriate spiritual growth, the objects of this World will manifest the objects of the Universe as sensations and reflect them as various objects, processes and phenomena. As a result of cognition, the objects of the Universe will be able to become the parts of their “material” (spiritual) World.</p>	<p>“The dark” matter</p> <p>The matter of “collapsed stars”</p>
...	$\leftrightarrow$	$\leftrightarrow$
...	<p><b>The Universe</b></p> <p><b>(The World of human beings)</b></p> <p><b>“The material” World</b></p>	$\leftrightarrow$
...	<p><b>THE NEIGHBOR “non-dense” “material” World</b></p> <p>The World, the objects of which individuals of the Universe can consider as SPIRITS, i.e. they can manifest them as sensations and reflect then as various objects, processes and phenomena. As a result of cognition, these objects can become the parts of “the material” (spiritual) Worlds of individuals of the Universe.</p>	<p>“The plasmic” matter</p>
“The dispersed” objects	$\leftrightarrow$	$\leftrightarrow$
	...	...

Every type of matter contains its own objects, processes and phenomena.

**3.9. What will ensue from this?**

*“... The dense (future) and relatively incorporeal (present) beings can simultaneously live in the Universe, although their bodies also consist of matter, but of simpler, lighter (of present-day matter) and more elastic one.*

*Thus, the distant future will represent not two but lots of the beings` types living at the same time. Any of these types will be almost immaterial in comparison to all the subsequent and purely material in relation to all the previous beings. It will turn out that we are the lightest, the most “incorporeal” creatures from very dense matter as we think now.*

*It sheds light on the infinite future, on different distant times ...”*

**Konstantin Tsiolkovsky**

**“Other More Dispersed Matter, Other Worlds, Other Beings”**

**“Scientific Ethnics”**

**1928**

*“... This concept is relative. So, we will consider familiar animals as spiritual in relation to those that will appear in decillions of years, from the more complex and dense matter ...”*

**Konstantin Tsiolkovsky**

**“Do Any Spirits Exist?”**

**1932**



*“... So, we are dense creatures surrounded not only by the same dense (but perfect and powerful) beings, but also by numerous incorporeal ones, and their number as infinite just as a past time. Each of these creatures is incorporeal in relation to the subsequent and purely dense in relation to all the previous ones.*

*It `s impossible to tell which groups of the incorporeal beings — the neighbor or the distant, less dense — have the greatest influence on us. Likely, the neighbor ones ...”*

**Konstantin Tsiolkovsky**

**[“The Organization of Invisible Worlds. Their Life.”](#) [“Scientific Ethnics”](#)**

1928

Nowadays there are objects in the Universe that differ in

- the period of evolution (most objects of the World (in the broadest sense of this word)) that significantly exceeds the evolutionary period of the Universe;
- the density of matter their bodies are based on;

and the number of these objects significantly exceeds the number of all possible bodies in the Universe.

#### 4. SPIRITS

*"It seems to me, I am likely to have a strong belief, at least, my philosophy dictates that peculiar mysterious creatures do exist."*

**Konstantin Tsiolkovsky**

**"Ethnics or Natural Basis of Morality"**

1902-1903

*"What is the reason for this belief in spirits, in another mysterious life to occur? One of the sources is developed (but limited by the modern science) biological understanding of nature, which we represent in our ethics, that is, the ability of each particle of matter from any part of the cosmic space to exist under the influence of the embryo. On this basis, everything is potentially alive and there is nothing dead at all.*

*Another source include death, dreams, hallucinations of the healthy, and especially of the sick people. This source is wrong and represents the result of ignorance of physiology or medicine.*

*But maybe there is also a third source: real mysterious and incomprehensible phenomena (however, we cannot be confident in their existence). If science will not confirm this existence, then it is only the result of our little awareness about the cosmic space and matter."*

**Konstantin Tsiolkovsky**

**"The Prime Cause"**

1918

*"Cast mind back and imagine the Universe billion decillions or as many years ago as possible. The molecules were less complex, the planets and suns were different, and creatures as well, the bodies of which were based on these simpler molecules. But molecular species emitted another invisible light, and our*



*organs of vision aren't able to manifest it, because there was the lower magnitude of the ether waves, and an aethereal medium was different, more dispersed and elastic than now.*

*The beings of that time were less dense, but they also developed and struggled for existence, in their bygone days they reached perfection and became the immortal masters of the World ..."*

*"A philosopher will say that the origin of modern matter is one and the same. But it doesn't stand in the way of its existence in many forms, taking into account its continuous and constant evolution: from the solid metals to the ether that is trillion times less dense. If the old types of unorganized matter could survive, having no reasoning power, the reasonable creatures could certainly have survived as well. Bacteria and other unicellular organisms exist from the dawn of time. Moreover, a human being owes a great deal to them. Like bacteria, we are surrounded by invisible suns, planets and creatures, which a man distinguishes only nowadays, aren't we?*

*Where do these higher creatures live? Do they inhabit only certain corners of the Universe or do they spread all over the World and can be everywhere they want? What are their properties? Do they have any connection with the present-day beings? Do they represent the beginning of the human life and of their kind, although absolute and celestial beings? Do they include their souls (their parts)? Do they intentionally take roots into an animal or a human being at its/his conception? These are strange questions without any answers ..."*

**Konstantin Tsiolkovsky**

**"Ethnics or Natural Basis of Morality"**

**1902-1903**

#### 4.1. SPIRITS – the objects based on SPIRITS



The terms the author connected with the SPIRIT concept he described in more detail in the VII “SPIRIT” Volume of “The New Cosmic Philosophy” book series (author`s note).

**SPIRIT –  
the scientific representatives consider it now as  
elementary and fundamental SOMETHING  
and, as a result, it`s the undestroyable basis of  
any object of the Universe.**

Taking into account that “SPIRIT is the undestroyable basis of any object”, we can assume that all objects of the Universe consist of these “elementary and undestroyable” elements and are called SPIRITS as the objects based of SPIRIT.



**SPIRITS — the plural number of the word SPIRIT.**

**SPIRITS –**

**all the objects of the Universe, because they are based on the fundamental objects or SPIRITS.**

**SPIRITS –**

**all the objects of the World (in the broadest sense of this word), since the boundary between the material and immaterial Worlds is subjective, i.e. conventional.**

If we discuss “the immaterial” World, using the terminology for describing “the material” World, so, we can represent the following definition:

**THE BODIES –**

**the manifested by individuals parts of objects that represent the combination of SPIRITS. SPIRITS, in their turn, became for an individual the part of his material World.**

#### 4.2. SPIRITS – the objects of the SPIRITUAL World

Despite the fact that any object in the World (in the broadest sense of this word) is the combination of SPIRITS, nowadays it is generally believed that the word-concept SPIRIT means not any object, but only objects of the SPIRITUAL World of individual, and below are the reasons why is it so.

Based on the memories of people who have experienced clinical death and, on the information received by psychics, it is believed that SPIRITS can easily pass through any “dense” objects, such as the walls of houses, the bodies of human beings, trees, etc. In this case, the word SPIRIT means only objects of the SPIRITUAL World of a human being. These objects consist of more “elementary” (“less dense”) objects than the objects of “the material” World of a human being.

If we discuss “the immaterial” World, using the terminology for describing “the material” World, so, we can represent the following definition:

**SPIRITS –  
the objects of the SPIRITUAL World, individuals have  
manifested them and considered as the parts of their  
material World.**



We can talk about Spirits and Worlds (“material” and “immaterial” ones) only in relation to a human being with ability to cognize.

#### **4.3. The main difference between SPIRITS and other objects of “the material” World**

In the Russian language, the word “spirit” also means air or smell, and it confirms one more time that the bodies of spirits are less dense than the rest of the objects` bodies from “the material” World most human beings are aware of.

In relation to the human beings, this definition may look like this:

**SPIRITS –  
the objects, the BODIES of which are based on less  
dense objects than the objects of the material  
World an individual is aware of.**

#### 4.4. What did the ancients know about SPRITES?

*[A sprite](#) is a supernatural entity. They are often depicted as fairy-like creatures or as an ethereal entity.*

*Spirits are often characterized by invisibility, reasoning, clairvoyance, the ability to fly, sudden disappearance and appearance. Spirit either doesn't manifest itself at all, or becomes visible, comes in touch with a human being, communicates with him (verbally or mentally), evokes a person's dreams, illness, and becomes the reason of certain natural phenomena.*

*Spirit can incarnate into unalive object, a plant or an animal causing the growth, breakage, disease, outlandish behaviour, abnormal phenomena occurring with an object, plant, or animal. In some cultures, there is an opinion that spirits can incarnate into the human body as well as overmaster his will ("obsession") ..."*

**Wikipedia — free encyclopedia**

#### 4.5. How do the modern scientists interpret the word SPIRIT?

Since SPIRITS don't belong to "the material" objects (according to opinion of practically all the modern scientists. The author's note), modern scientists don't consider their research as possible.



4.6. SPIRITUALIZATION of “the material” World

**SPIRITUALIZATION (spirit-realization) –  
the scope of broadening one`s material World in order  
to communicate with SPIRITS, i.e. to coexist, conflict,  
find common ground, make deal, contest, address a  
request to them, force them to fulfill your wishes,  
encourage or even punish them.**

In ancient times it was the main distinctive feature of sorcerers.

**A SORCERER (SORCERESS) –  
an individual with ability to involve non-human  
creatures (spirits) in order to make some magical  
actions.**



The terms the author connected with the SORCERER and SORCERESS concepts he described in more detail in the II “SECRET KNOWLEDGE” Volume of “The New Cosmic Philosophy” book series (author`s note).

#### **4.7. The variety and hierarchy of SPIRITS**

Since the boundary between “the material” and spiritual Worlds of certain individual is conventional and we can use one and the same terminology to describe these Worlds, then we can state the following:

- there is infinite number of the objects in the spiritual World;
- all objects of the spiritual World are hierarchical according to numerous parameters;
- descriptions of the types and structures of the objects` hierarchies in the spiritual World depend on the level of SPIRITUALITY and SPIRITUALIZATION of individual;
- knowledge concerning objects, processes and phenomena of the spiritual World refers to “secret knowledge”, i.e. it cannot be imparted as a writing or a speech.



## 5. The guardians and mentors

### 5.1. GUARDIANS and GUARDIAN ANGELS

A human being creates and/or uses various objects of the Earth (and sometimes other objects of the solar system) in his/her activities when shaping his/her own World. And such activity of the human beings comes along with a total lack of understanding the fact that any object has its own “guardians”.

The main task of “the guardians” of any object is “to keep the object in its entirety and good condition”. That’s why they were called GUARDIANS since ancient times.

**THE GUARDIANS –  
the Creatures or Entities whose main duty is to  
protect the object from undue influence, i.e.  
protection of the object.**

Any objects can have the GUARDIANS that represent a part of the human organism, including his bodies. These GUARDIANS are energetically weak and are able to “protect” only small parts of your body.

But there also celestial creatures who “protect” people as well as “guide” them. We traditionally call these creatures as GUARDIAN ANGELS. GUARDIAN ANGELS are energetically more powerful and capable of both “protecting” and “guiding” the human beings.



The terms the author connected with GOD and CELESTIAL CREATURES concepts he described in more detail in the XI “GODS” Volume of “The New Cosmic Philosophy” book series (author`s note).

*“The objects called “Guardian Angels” are directly tangent to the fields that represent the basis of our thoughts, actions, intentions and connections, thereby getting a holistic and diverse view of them.”*

**Wikipedia — free encyclopedia**

## **GUARDIAN ANGELS – the celestial creatures whose main functions are protecting and guiding a human being.**

*“An angel is generally a supernatural being found in various religions and mythologies. Angels are often depicted as benevolent celestial beings who act as intermediaries between God or Heaven and Humanity. Other roles of angels include protecting and guiding human beings and carrying out God`s tasks.”*

**Wikipedia — free encyclopedia**





**An angel (a detail of Raphael's picture "The Resurrection of Christ", 1499-1502)**

Either many or few guardian angels can protect every particular human being.

It's bad if their number is small.

It's good if there are lots of them. You have someone to care about you and your body.



## 5.2. DEMONS or MENTORS

If an individual improperly influences the object during his activity, the object's guardian angel appeals to the guardian angel of individual with "the statement of undue influence". If the guardian angels assent to "the statement", the guardian angel of individual immediately becomes his mentor, indicating him "the true path", that is, **DEMONstrates** his wrong actions and **suggests** "the right way".

The short hints can be different.

For people without extrasensory perception it looks something like this:

- easy hints – if you slipped, bite your tongue, twisted the ankle, a bird flew into your window, etc. These hints are given for an individual to sense them, use his head and understand the mistakes;
- average hints – if someone fell down and smashed his face, broke his limb, was involved in a crash, banged up a car, etc. Such type of hints is given when a person was unable to reveal "easy" hints;
- difficult hints – if one caught a disease and took to his bed for a long period of time, etc. They are given when a person was unable to reveal both "easy" and "average" hints; the similar types of hints are intended for a person to think about his doings;



- and the last hint is death ...

For people with extrasensory perception, it looks a bit different:

- a person hears a voice instructing him;
- a person has “a prophetic” dream;
- a person sees a hint as an image (vision), which appears from somewhere;
- etc.

“The initiate” people see it in the following way:

- a person asks the celestial creature straight out and receives the answer.

A GUARDIAN ANGEL who **DEMON**strates an individual his wrong actions and suggests “the right way” is called **A DEMON**.

## **A DEMONSTRATOR**

**[from French dūmonstration - to show, from Latin demonstratio - a proof] - an individual who is involved in the demonstration of something and based on it, he provides his proof.**

**A DEMON (DEMONstrator) –  
the characteristic of individual's GUARDIAN ANGEL  
responsible for the demonstration of his wrong  
actions in relation to another object.**

It turns out that a guardian angel and a demon represent nothing else but one creature in two images.

**A GUARDIAN ANGEL and A DEMON –  
the images (entities) of one and the same object.**





**The Guardians © Ganna Krasnostup  
35x55. Canvas. The oil-painting. Acryl. 2009**

The ancient people stuck to the right point of view!

That`s why the early sources didn`t describe any difference between such terms as DEMON and GOD, as well as demons` connection either with evil or good.

But only now it becomes clear why it happens so.

Sometimes A GUARDIAN ANGEL of individual is called A DEMON (turns into A DEMON), and after demonstrations and teachings, it`s called A GUARDIAN ANGEL again!

The different sources give the following definitions of the word **DEMON** (from the ancient Greek δαίμων, dáimon, “deity”):

- “A SOUL” of any thing that is present in every object or phenomenon;
- “mental forces” with ability to perform certain actions;
- “the inner voice”, which a human being considers as “divine” and protective from hasty decisions (Socrates` point of view);



- “God of this moment”, i. e. a demon acts suddenly and instantly and disappears also in the twinkling of an eye.

The synonyms of the word DEMON include:

*Abaddon, Azazel, Anchutka, demon, Belial, Beelzebub, water spirit, fiend, fictitious creature, Gallu, gargoyle, mogwai, dvorovoi, genie, devil, spirit, spirit of doubt and mockery, incubus, Cabiri, cacodemon, centaur, cron, febricity, the evil one, mare, Mephistopheles, the Evil Spirit, Clootie, Nocnitsa, ovinnik, damnedest, polevik, rakshasa, Satan, satyr, Siren, succubus, Typhus, insidious, imp, yaksa ...*

*It's a hard work to classify demons. However, the Dutch doctor and occultist Johann Weier gave a detailed classification of demons in his book “Pseudomonarchia Daemonum” (1588), stressing the basic groups:*

- **Guardian demons** of a person, an object or locality (Geniuses). They include various characters of the folklore such as leshy, water spirit, domovoy, witches, nymphs and dryads, guardians of the palaces of ancient cultures like shedu, and guardians of a human being such as a guardian angel.
- **Demons as elemental spirits** don't necessarily live in a certain place (Elemental Spirits). These are dwarfs, elves, mermaids, satyrs, etc.
- **Demons as prototypes** support the unchangeable way it is and serve as the immortal prototypes for all creatures on earth (the Archons).

### 5.3. Is it possible “to drive out” DEMONS?

Several events can happen to people and they often see no difference between them:

1. On conditions of **the basic embodiment**, some other object (entity, creature, organism ...), and not necessarily the entity, incarnated into the human body (residence). This can happen for various reasons ...
2. As a result of the wrong actions of individual in relation to any object, his guardian angel turned into a demon and began to **demonstrate** the right way and to guide this person.
3. On conditions of **the non-basic embodiment**, any **visible** object (entity, creature, etc.) incarnated into the human body (residence).
4. On conditions of **the non-basic embodiment**, any **invisible** object (entity, creature, etc.) incarnated into the human body (residence).

**The first case** is well described in different literature. If some NON-HUMAN object (entity, creature, organism, etc.) and not necessarily the ENTITY incarnated into the human body on conditions of **the basic embodiment**, then



he isn't a human being any longer and one must perform immediate EXORCISM. And this is the right procedure in this case.

*“**Exorcism** (from Greek εξορκισμός, exorkismós “binding by oath”) is the religious or spiritual practice of evicting demons or other spiritual entities from a person, or an area, they are believed to have possessed. The practice is ancient and part of the belief system of many cultures and religions.*

*Depending on the spiritual beliefs of the exorcist, this may be done by causing the entity to swear an oath, performing an elaborate ritual, or simply by commanding it to depart in the name of a higher power.*

*In Christianity, exorcism is the practice of casting out demons. In Christian practice the person performing the exorcism, known as an exorcist, is often a member of the Christian Church, or an individual thought to be graced with special powers or skills. The exorcist may use prayers and religious material, such as set formulas, gestures, symbols, icons, amulets, etc. The exorcist often invokes God, Jesus and/or several different angels and archangels to intervene with the exorcism. Protestant Christian exorcists most commonly believe the authority given to them by the Father, Son, and Holy Spirit (the Trinity) is the source of their ability to cast out demons.*

*In Islam, exorcism is called ruqya. It is used to repair the damage caused by sihr or black magic. Exorcisms today are part of a wider body of contemporary Islamic alternative medicine called al-Tibb al-Nabawi (Medicine of the Prophet).*

*In general, people considered to be possessed are not regarded as evil in themselves, nor wholly responsible for their actions, because possession is considered to be unwilling manipulation by a demon resulting in harm to self or others. Therefore, practitioners regard exorcism as more of a cure than a punishment. The mainstream rituals usually take this into account, making sure*

*that there is no violence to the possessed, only that they be tied down if there is potential for violence.*

Wikipedia — free encyclopedia

It should be understood that:

## **EXORCISM –**

**a casting out any non-human object (inhumans, entities, creatures, organisms, etc.) from the human body. This non-human object has incarnated into the human body and try to get a full control over it.**

In the second case, only individual himself can cast out A DEMON, because his wrong actions were the reason for them to appear. That's why it remains unclear whose side took the ministers of any religion when driving out "a demon" from the certain human body.

**People have no right to drive out demons from the demonized person. Only individual himself can make efforts for realizing his wrong actions in relation to another object.**



**A DEMON will stop guiding a person only if a guardian angel senses his realized resipiscence (asking for forgiveness).**

It becomes clear why the main requirements for the priests participating in casting out “demons” are no family and children, and no relatives at best. Participation in this procedure contradicts almost all “the holy” writings and the laws of the Universe.

Actually, contending against the person’s guardian angel that turned into a demon, the clergymen perform wrong actions in relation to individual and create their own demons!

**The third case** is already introduced in the modern medicine, where medical professionals are aware of how to eviscerate various objects from the human body for its appropriate functioning. The examples are diverse helminths, bacteria, viruses ...

**The fourth case** is the most interesting one. But if individual isn’t able to see the incarnated object, i. e. it’s *invisible*, then there is no need to study it ...

6. **SIN is the objective concept**

During many centuries people have “forgotten” the actual meaning of the word SIN.

Today this concept varies in every country of the world, in every religious doctrine, in every ...

People in one country consider the following actions to be SINS: men with rolled up sleeves and ties, women with uncovered faces on the street, etc. (Libya)

In another country, SIN consists in eating certain food products, working on certain days of the week, etc. (Israel)

This list is endless ...

But people invented all these conventionalities for solving their problems and achieving their goals. This has nothing to do with the Universe.

In the Russian language, the word “sin” (from Old Slavic **грѣхъ**) initially corresponded to the word **mistake** (“fault”, “failure”).



**TO SIN – to make a mistake.**

The mistake can be accidental, made because of ignorance, but one can also make it intentionally. The result will be one and the same – a human being becomes SINFUL.

**SIN –**

**an objective characteristic of one of the person`s entities, it`s the result of his wrong actions in relation to any object.**

**SIN or FAILURE –**

**one`s single mistake that led to appearance of one DEMON.**

**SINS or FAILURES –**

**one`s multiple mistakes that led to appearance of multiple DEMONS.**

**A SINNER –**

**a person who made at least one mistake that led to appearance of at least one DEMON.**

It seems to be clear.

## SIN –

**one of the objective parameters of the human beings.**

And the intensity of “sinfulness” is most likely to be measured physically in the very near future.



A human being has an opportunity to get rid of DEMONS (of SINS) **only** during the basic embodiment, i.e. while a human being is in his body.

The other inhabitants of the Universe have the same opportunity.

But the following question may arise: what is the way to differentiate between wrong and right actions? The answer is quite simple: learn and determine by yourself.



If you failed, your GUARDIAN ANGEL will help, i. e. will DEMONstrate you how to do the right thing. Just “look carefully around” and search for the hints.

## 7. CONFESSION – the method of salvation

**CONFESSION —  
a sinner`s radical reconsideration of his worldview in  
order to realize his sins.**

Confession (from the ancient Greek. μετάνοια, “a change of mind”) — one`s realization of his sins.





**"The Return of the Prodigal Son" by Rembrandt.**

The verb "to turn from" is used in the Bible as the synonym for "to confess" (e.g. "So turn from your evil ways, each one of you, and reform your ways and your actions" (Jeremiah 18:11)).



The example of confession is represented in “The Parable of the Prodigal Son”.

That`s why

- before eating the meat, many religious people pray and ask forgiveness the animals they killed;
- in many philosophical doctrines (spiritual practices) people are encouraged to restore in their memory events since the early childhood before conducting serious research and after revealing their wrong actions, they ask for forgiveness the objects they hurt;
- etc.

So,

**The main way for people to get to PARADISE is  
impeccability, i. e. existence in the human body  
without DEMONS.**

## 8. PARADISE and HELL

### 8.1. What is HELL?

When shaping his/her own World, individual creates and/or uses various objects, processes and phenomena in his/her activity on the Earth. Any time soon a human being will create new objects on other planets of the Universe. Moreover, a person often performs this activity without complete understanding of the fact that any object has its own GUARDIAN ANGELS and without their consent any activity will be considered as wrong. And such actions of individual will lead to appearance of DEMONS (his own guardian angels will “guide” him what is “good” and what is “bad”).

DEMONS (guardian angels) live a good deal more than the human body.

So, after death of the physical BODY the incarnated ENTITY of a human being will “see” around all those DEMONS it created itself during existence in the human body. This can be either HELL (if there are lots of DEMONS) or even PARADISE (if there are no DEMONS at all).

### HELL –

**a conventional name for the state of the discarnate human ENTITY that is surrounded by lots of DEMONS. This ENTITY creates them during the basic embodiment into the dense human body.**





*“There once was a little boy who had a bad temper. His father gave him a bag of nails and told him that every time he lost his temper, he must hammer a nail into the back of the fence.*

*The first day the boy had driven 37 nails into the fence. Over the next few weeks, as he learned to control his anger, the number of nails hammered daily gradually dwindled down. He discovered it was easier to hold his temper than to drive those nails into the fence.*



*Finally, the day came when the boy didn't lose his temper at all. He told his father about it and the father suggested that the boy now pull out one nail for each day that he was able to hold his temper. The days passed and the young boy was finally able to tell his father that all the nails were gone.*

*The father took his son by the hand and led him to the fence. He said, "You have done well, my son, but look at the holes in the fence. The fence will never be the same. When you say things in anger, they leave a scar just like this one. You can put a knife in a man and draw it out. It won't matter how many times you say I'm sorry, the wound is still there."*

*The little boy then understood how powerful his words were. He looked up at his father and said "I hope you can forgive me father for the holes I put in you."*

*"Of course, I can," said the father."*

### **The Parable of Nails in the Fence**

These are your own DEMONS. At least try to decrease their number till a physical death of your body. It's really very important.

If you are reading this Volume, it's safe to say: "You still have grounds for hope!"

Everything new is actually well-forgotten old ...



8.2. What is PARADISE?

**PARADISE –**

**a conventional name for the state of the discarnate human ENTITY without any DEMONS, because it didn't create them during the basic embodiment into the dense human body.**

**PARADISE –**

**a conventional name for the state of a sinless individual, which he enters after death of his physical BODY.**

*“Paradise is a religious or metaphysical term for a place in which existence is positive, harmonious and eternal; in contrast to the miseries of normal existence, in paradise there is only peace, prosperity, and happiness. It is a place of contentment, but it is not necessarily one of luxury or idleness, and often described as “a higher” place, the holiest place, in contrast to the normal world, or an underworld such as Hell.”*

**Wikipedia — free encyclopedia**





**"Adam and Eve in the Garden of Eden" by Lucas Cranach, 1530.**

***"The Garden of Eden (from Hebrew. גַּן־עֵדֶן, Gan Eden; Jannat 'Adn) — is the biblical "garden of God" described most notably in the Book of Genesis, an initial place of living for people."***

**Wikipedia — free encyclopedia**



### 8.3. The difference between HELL and PARADISE

*One day a man said to God, "God, I would like to know what Heaven and Hell are like."*

*God showed the man two doors. Inside the first one, in the middle of the room, was a large round table with a large pot of stew. It smelled delicious and made the man's mouth water, but the people sitting around the table were thin and sickly. They appeared to be famished. They were holding spoons with very long handles and each found it possible to reach into the pot of stew and take a spoonful, but because the handle was longer than their arms, they could not get the spoons back into their mouths.*

*The man shuddered at the sight of their misery and suffering. God said, "You have seen Hell."*

*Behind the second door, the room appeared exactly the same. There was the large round table with the large pot of wonderful stew that made the man's mouth water. The people had the same long-handled spoons, but they were well nourished and plump, laughing and talking.*

*The man said, "I don't understand."*

*God smiled. "It is simple, - he said - love only requires one skill. These people learned early on to share and feed one another. While the greedy only think of themselves ..."*

**The Parable of the Long Spoons**

**HELL and PARADISE have the same structure.  
The difference is inside individuals.**

A human being is going hand in hand with his GUARDIAN ANGEL (or guardian angels). It can be affirmed that a human being and demons he created are also inextricably connected.



9. SPIRITUALITY

9.1. THE INNER INDICATORS of SPIRITUALITY

**SPIRITUALITY (the first inner indicator of manifestation) – one`s ability to reflect manifested objects, processes and phenomena in the extended (due to spiritual growth) ranges of different physical quantities.**

It is the ability to manifest in the extended ranges of various physical quantities that indicates one`s broadening of the boundaries of his “material” World by including to it previously imperceptive objects, processes and phenomena.

It is the ability to manifest in the extended ranges of various physical quantities that indicates that the spiritual World of individual is full of different objects, processes and phenomena, which are imperceptive for other persons.

That`s why we can argue that:

**SPIRITUALITY is essential for COGNITION.**

It is the ability to manifest in the extended ranges of various physical quantities that indicates individual's involvement in "spiritual" practice and his own "spiritual" growth that lead to such results.

The more SPIRITUAL a human being, the bigger number of "divine" powers and opportunities he has, because he gains the capacity to CREATE in the Worlds inaccessible to "spiritually poor" individuals.

**SPIRITUALITY (the second inner indicator of manifestation) is one's possession of divine powers and opportunities.**

A human being becomes SPIRITUALLY DRIVEN.



9.2. SPIRITUALIZATION

**A NATURAL SPIRITUALIZATION (spirit-realization) of the material World of certain human being results in his communication with SPIRITS, i.e. coexistence, conflict, finding common ground, making deal, contest, addressing a request to them, forcing them to fulfill his wishes, encouraging or even punishing them.**

### 9.3. THE EXTERNAL INDICATORS of SPIRITUALITY

**SPIRITUALITY (the main external indicator of manifestation) is solicitous attitude to yourself and the outside World, based on the prevalence of spiritual, moral and intellectual interests over material ones.**

A constant “spiritual” development of individual makes him “to see” (feel) the outside World in a new light.

He acquires “**other**” knowledge.

It is KNOWLEDGE (and not BELIEF) of individual that will be the reason for his careful attitude to himself, other people, the outside World. Moreover, his spiritual, moral and intellectual interests will dominate over material ones.

A person begins to see many objects, processes and phenomena of the Universe other people aren't able to see. And individual perceives all this as the interdependent and interconnected parts of the whole.



Individual begins to conceive the danger of lie, deceit, murders, etc., and other people misknow him as the personality.

Money now isn't of high priority for him, it is just a virtual object created by people. And the importance of natural, cosmic objects sharply increases, because they were created by God.

#### **9.4. The hypothesis on the main manifestation principle of “divine” powers and opportunities**

**Individual gets DIVINE powers and opportunities after reaching a certain level of spiritual development.**



As an example, you are recommended to look at the DNA change under the influence of one's thoughts (thought forms), i. e. the so-called “linguistic” genetics, firstly introduced by Peter Garayev.

9.5. TRUE vs IMAGINARY spirituality

**TRUE SPIRITUALITY –**

**a qualitative characteristic of individual's spirituality, which consists in apperance of divine powers and opportunities due to his spiritual growth.**

The manifestation of certain human capabilities after injuries or under the influence of any substances, irradiations, limitations, etc. has nothing to do with SPIRITUALITY and we don't describe such a process in this chapter.

As a rule, media practitioners reveal people with such abilities and individuals begin to increase their material "well-being", based on "the newly discovered circumstances".

**IMAGINARY SPIRITUALITY –**

**a qualitative characteristic of one's spirituality, which consists in apperance of previously lacking divine powers that represent the result of posttraumatic syndrome.**



9.6. THE INITIATED or SPIRITUAL GUIDES

**THE INITIATED or SPIRITUAL GUIDE –  
an individual with such personality trait as true  
SPIRITUALITY.**



The terms the author connected with the INITIATED concept, he described in more detail in the II “SECRET KNOWLEDGE” Volume of “The New Cosmic Philosophy” book series (author`s note).

9.7. HOLINESS and A HOLY PERSON

In olden times people referred the word “holy” not to “the body”, but to “a soul”, so they didn`t say “A HOLY PERSON”, but “A PERSON WITH A HOLY SOUL!” And it`s more appropriate expression!

**A HOLY PERSON –  
the characteristic of a person who doesn`t create any  
DEMONS during his embodiment into the human  
body.**

**10. The measurement of SPIRITUAL level**

**10.1. A fundamental danger of creating new technologies by the spiritless human beings**

The use of various technical means with ability to work in the wider ranges of different physical quantities, as well as of various “additional illuminations” and “lightnings” can certainly reinforce the basic method and provide the human body with ability to manifest in these wider ranges, but, unfortunately, this direction of development is dangerous for the modern humankind.

*“... Just imagine that we would suddenly learn to turn substance into energy, that is, we would embody Einstein's formula into reality beforehand. Then — taking into account the human morality — give up all hope, people will get their heads blown off. There would be hell on earth: people would have shown their pigeon mentality — no stone would be left upon another, even not to speak of people. The humankind would be destroyed!*

*Remember, once we spoke about the end of the world. It is in the immediate vicinity of us, the only way out is the triumph of mind! ... the humankind actually risks everything.”*

**Konstantin Tsiolkovsky**  
[“The Theory of Cosmic Eras”](#)

Please answer one simple question: “What are your actions in relation to a human being who decided to blow up the Earth, and, as a result, to kill you,



your children, relatives and friends?”. Believe me, this question isn’t an idle one, it has rather compelling reasons.

And our thoughts are “the abodes” of Gods.

The lifetime of the humankind is suspiciously short even in comparison with the lifecycle of the Earth ...

It seems that many different “humankinds” already lived on our planet ...

It seems that the leaders of these “humankinds” also tried to transfer their power “by succession” and sell it for some virtual and personally invented “wrappers” ...

But it turned out that there are more ancient and more powerful beings who aren’t interested in destruction of the Earth. And they cannot make it out yet whom to communicate with. It appeared to be that there is a very limited number of people on the Earth with ability to perceive (manifest) their information. But these human beings have nothing to do with the power (the leadership of the Earth’s humankind) and have no abilities and means to pass information they received along to the whole humankind ...

For the sake of the Earth salvation, these creatures can go to the limit, if necessary ...

## **10.2. The hypothesis on principal possibility to measure the level of spirituality**

If we take into account that

- “the material” World is a part of the World (in the broadest sense of this word) an individual has manifested as sensations and reflected them as various objects, processes and phenomena;
- the result of individual’s spiritual development manifests itself as broadening of the perception ranges of various physical quantities, which allows him to manifest new sensations and, as a result, to reflect previously inaccessible objects, processes and phenomena;
- a spiritual development of individual is the basis to constantly expand the boundaries of his “material” World by moving some objects, processes and phenomena from “the immaterial” to his “material” World,



we can conclude that

**The level of one`s SPIRITUAL development (SPIRITUALITY) can be measured by special devices.**

**The technique development for measuring the level of one`s SPIRITUAL growth (SPIRITUALITY), using special devices is possible.**

Of course, there is a lack of appropriate devices and techniques now but such may be created in the very near future.

It should be noted that other creatures from other Worlds could have these devices and techniques, which allows them to DEFINITELY perform the appropriate measurements in relation to any human being even today.

### **10.3. The main principles of measurement**

To perform this measurement, we need to follow the nexs steps:

- to determine the types of physical quantities, according to which the measurements will be taken;
- to choose the instruments for every kind of physical quantity in order to generate and pick up signals in their corresponding ranges;

- to choose the instruments that allow you to record the fact of manifesting the instrumentally generated signals;
- to construct 3D models for every kind of physical quantity in the research and to determine the notional volume for each of them;
- the conventional level of SPIRITUALITY can be determined as a conventional sum of the volumes of all 3D models in this research.

Under condition of a certain level of scientific and technological development, one will easily and quickly perform this measurement.

In order to measure the level of SPIRITUALITY, the following steps are recommended:

- introduce a new type of physical quantity: **SPIRITUALITY**;
- introduce the size of this physical quantity – **A KET**.

The name of this physical quantity is the abbreviated name of Konstantin Eduardovich Tsiolkovsky.



## **A KET – the measurement unit of A SPIRITUAL level.**

The estimation principle should be like in sports (as an example, decathlon). Despite the fact that all sports are different, the athlete receives points for achievements in every kind of decathlon according to a previously developed scale of specialists. Then all the points are summed up and the winner will become a person with the maximum number of points.

I would like to draw the attention of my readers to the following issue. Even if a human being is a world champion in one of the decathlon, he/she can lose on the general sum of points.

Exactly the sum of points determines diversity and capabilities of a certain athlete.

**THE LEVEL OF SPIRITUALITY –  
one`s conventional characteristic expressed in the sum  
of points, which is directly connected with the  
bandwidth of various physical quantities an  
individual is able to perceive during cognition and  
reflect them as different objects, processes and  
phenomena.**

## **10.4. The importance of measuring A SPIRITUAL level for the future of the humankind**

The measurement of A SPIRITUAL level is very important, because already today there are organizations and occupations on the Earth where ONLY human beings with the higher level of spiritual development are able to work ... Only such people will be able to take ADEQUATE decisions in the near future, which “spiritually poor” people or leaders of various countries (“by inheritance” from the modern leaders) don’t actually understand.

It is the value of A SPIRITUAL level, and not any other IQ tests that will demonstrate the true capabilities of a particular human being.

For some reason, all people have no doubts about the need to conduct various tests and medical examinations in order for a decision-maker to appoint certain people to the certain positions or, if necessary, when people fulfill any new duties.

No one doubts the need for medical examination among the drivers. Everyone understands that a color-blind person cannot become a driver, since he can confuse the red and green colors of a traffic light. It can result in the car accidents with many victims being involved.



Everyone understands that a human in a poor state of health cannot start his journey to the cosmic space and work on the ISS (the international space station). The body (organism) of such “an astronaut” can fail such tests without a preliminary check of his health and many days trainings.

Simply put, there is no:

- good supertaster, chef, wine steward with the poorly functioning channels of his body responsible for receiving and processing taste information;
- good musician, tuner of musical instruments, etc. with the poorly functioning receptors of his body channels responsible for receiving and processing sound information;
- good artist with the poorly working channels of his body responsible for receiving and processing visual information.

I can continue this list ...

I draw the attention of my readers that we aren't talking about obsolete such concepts that don't correspond to the modern paradigm, e. g. the organ of sight, the organ of hearing, etc., we are discussing the channels for information

receiving and transmitting that provide the body of a particular human being with ability to manifest certain sensations. And these are, as people say in Odessa, two big differences.

The person can be a good artist even without eyes but if using “other” receptors and channels for information receiving and processing than “the average” human beings do.

The person can be a good musician even being “deaf” according to the modern standards but if using “other” receptors and channels for receiving and processing acoustic information than “the average” human being does, the so-called bone conduction.

The most curious readers know (I hope so) that in the World,

- there are symphony orchestras, all musicians of which are “deaf” to different extents according to the modern medical grounds;
- nowadays many people are able to read books, using the palms of their hands. We aren't talking about the special braille lines, but about the possibility of the palms' receptors of a human being to be involved in the functioning of the channels for receiving and processing visual information;



- etc.

I wouldn't wish anyone to be on the operating table of neurosurgeon with shaky hands, or to rest on the beach, where all the rescuers have a bad hearing

...

The reasonability of both testing schoolchildren before entering universities or passing the corresponding exams by schoolchildren has become today not a technical, but a political issue.

If we are talking about representatives of the government, i. e. about different state leaders, they don't undergo any mandatory and periodic psychiatric examination. But the millions of human lives depend on their actions and decisions!

I will try to cover this issue very briefly, so that every reader could realize its importance.

**Firstly.** Using special instruments, one is able to measure the level of spirituality even today.

**Secondly.** Wolf Messing knew the outcome of the Great Patriotic War long before it began and even said the certain date of the USSR victory. For this, he was persecuted by the representatives of Fascist Germany.

**Thirdly.** If only Hitler had seen the same information as Wolf Messing ... Did he launch this bloody world war? More likely not than yes!

Yes, I understand that it's a very brief description of this issue. But it's important to get the point – there is a need to change something in our usual “democratic elections” of the government officials.

Otherwise, it will lead to destruction of the humankind, without mentioning the whole country ...

The destruction of the humankind, and not of the Earth and all beings inhabiting it ...



## 10.5. The main principle of the XXI century`s POWER

**The XXI century – the first century in the history of the modern humankind, where the main principle of power on Earth will be: Only people with higher level of spirituality must assume senior positions in the power hierarchy.**

Some people may object that “literate” and “educated” politicians should lead the countries, and only highly spiritual human beings can be among their advisers. But the answer is very simple – nothing will come of this idea. And that is why:

- spirituality refers to “secret” knowledge and the information of this type is much more accurate and reliable than information of any of low spirit politicians. Moreover, political media consultants cannot pass it to their chiefs, using writing or speech;
- split-second decisions should be made according to emerging circumstances. As an example, the communion between the humankind and “other” civilizations, “other” beings and entities.

So, these circumstances should be used as a reason for considering the 21st century as the last century in the history of the humankind, when:

- power can be inherited;
- people with low levels of spirituality can come to power.

Moreover, this decision is already predetermined and doesn't depend on the modern power.

It's all about one thing: will the humankind survive?

**The XXI century – the last century in the history of the modern humankind when power can be reposed by inheritance.**

© 2018, Helen Zhoglo, translation into English



## 11. Authors – Mykola Krasnostup & Co



### **Mykola Krasnostup**

CEO & co-founder of the Information Security Center Ltd.

Radio engineer, patent engineer.

Website: [www.krasnostup.com](http://www.krasnostup.com)

Blog: [www.krasnostup.com/en/blog-en/](http://www.krasnostup.com/en/blog-en/)

Email: [mykola@krasnostup.com](mailto:mykola@krasnostup.com)

LinkedIn: [ua.linkedin.com/in/mykolakrasnostup](https://ua.linkedin.com/in/mykolakrasnostup)

Skype: [mykola.krasnostup.work](https://www.skype.com/people/mykola.krasnostup.work)