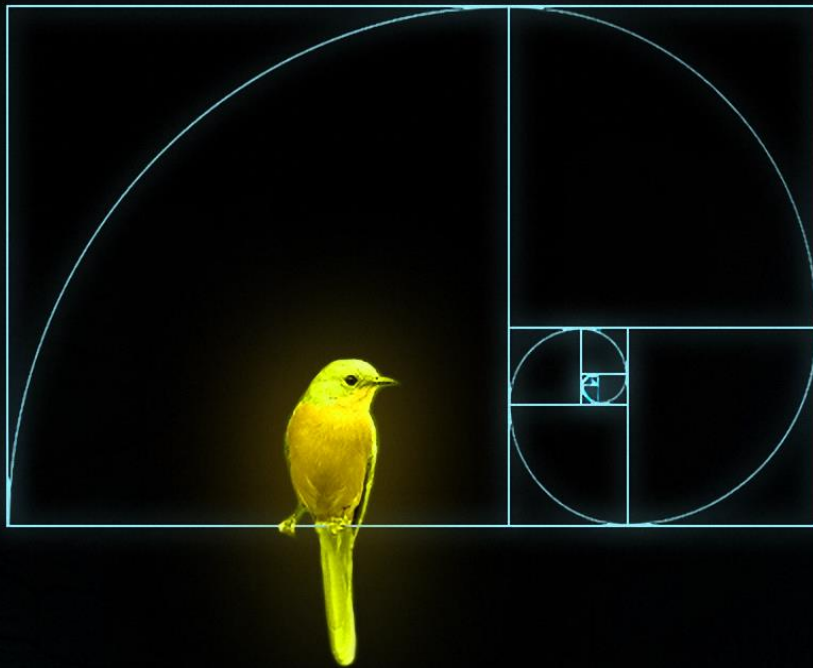
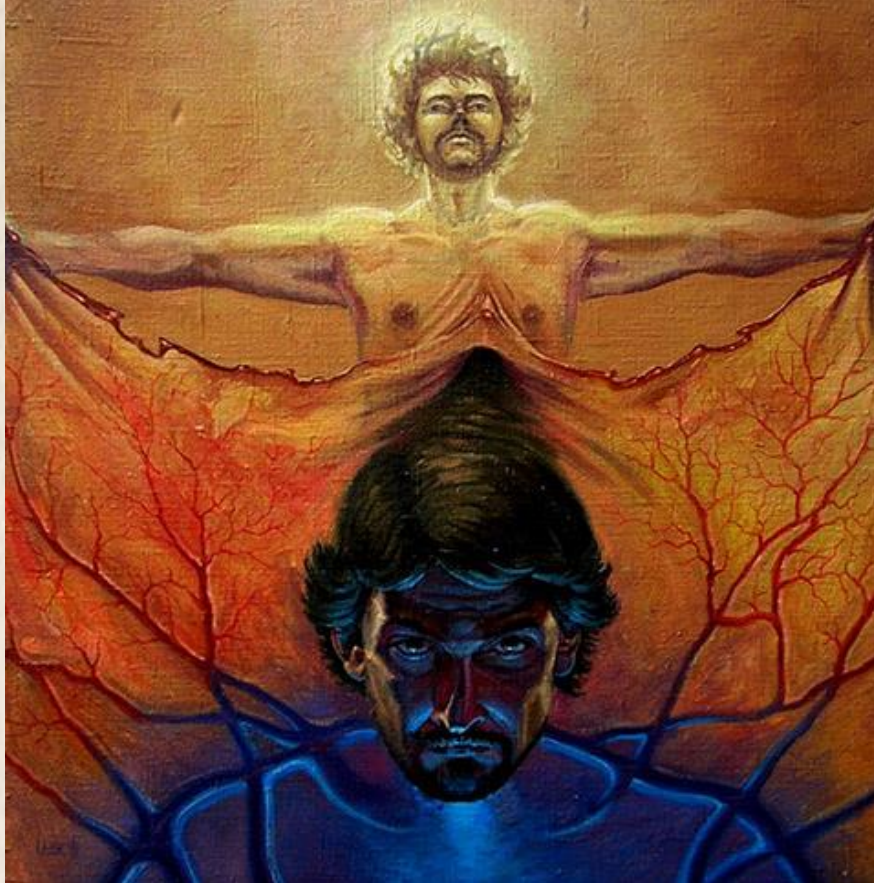


Bodies



The New Cosmic Philosophy
Volume IV



"[R&R](#)" canvas, oil, 70x70 cm, 1999. Copyright © [Serge Laisk](#)

An amateur's essay on the Universe ...
Who are we? Where are we from? Where do we go?
A Human being, his Worlds, his Gods...

Copyright © 1973-2018, [Mykola Krasnostup & Co.](#) All Rights Reserved.

Cover page - Copyright © 2013 Eugene Prodayko. All Rights Reserved.

This e-book or any portion thereof may not be reproduced or used in any manner whatsoever without the express written permission of the publisher except for the use of brief quotations in a book review.

CONTENT

| | |
|--|-----------|
| 1. THE BODY of an object..... | 5 |
| 1.1. The interpretation of the term BODY by early Slavs..... | 5 |
| 1.2. The interpretation of the term BODY by the modern scientific representatives | 5 |
| 1.3. The BODY – one`s reflection of manifested part of an object | 7 |
| 1.4. The parameters of an individual`s receptors of his BODY as “SPLIT of cognition” . | 8 |
| 1.5. The subjectivity of the BODY concept | 10 |
| 1.6. One OBJECT – lots of the BODIES` reflections | 13 |
| 1.7. An individual uses different BODIES of an object for cognition..... | 16 |
| 1.8. VISIBLE and INVISIBLE objects..... | 18 |
| 1.9. “INCORPOREAL” objects | 22 |
| 1.10. The hierarchy of the BODIES in the Universe | 23 |
| 1.11. The phases of development of the objects` BODIES | 26 |
| 1.11.1. THE BIRTH..... | 26 |
| 1.11.2. THE DEATH | 27 |
| 1.11.3. A PERISHING | 29 |
| 1.11.4. A DYING | 29 |
| 1.11.5. A CORPSE..... | 29 |
| 1.11.6. A REPRODUCTION..... | 30 |
| 1.12. The CLONES of bodies..... | 30 |
| 1.13. What do psychics “see”?..... | 34 |
| 2. THE BODY of a human being | 37 |
| 2.1. THE VISIBLE and INVISIBLE bodies of human beings | 38 |
| 2.2. “THE DENSE” BODY of a human being | 40 |

| | |
|---|-----------|
| 2.2.1. The hierarchy of “the dense” BODIES that are inside “the dense” body of a human being..... | 42 |
| 2.2.2. The variety of “the dense” bodies of human beings | 43 |
| 2.3. “THE SUBTLE” bodies of human beings..... | 49 |
| 2.4. The overall philosophy of the DENSE and SUBTLE human bodies | 55 |
| 2.4.1. The physical origin of the DENSE and SUBTLE human bodies | 55 |
| 2.4.2. The nature of the ENERGY body of a human being..... | 57 |
| 2.4.3. The interconnection between ENERGY and DENSE body of a human being... | 58 |
| 2.4.4. Short conclusions..... | 59 |
| 3. Authors – Mykola Krasnostup & Co..... | 61 |

1. THE BODY of an object

1.1. The interpretation of the term BODY by early Slavs

Early Slavs

The BODY differs from the external environment by its level of density. That's why early Slavs have clearly expressed their idea about the word FLESH.

THE FLESH is a part of the being with peculiar level of density that differs from density of the outside World.



The terms the author connected with the BEING concept he described in more detail in the X "BEINGS" Volume of "The New Cosmic Philosophy" book series (author's note).

1.2. The interpretation of the term BODY by the modern scientific representatives

Elementary geometry

The BODY is a part of space limited from all sides.

Theory of sets

The BODY is a compact set with internal points.

Geometry

The BODY is a part of coherent space limited by the unbounded surface.

Physics

The BODY is a physical object having mass, size and a border line that separates it from other objects.

Biology

The BODY is a material covering of the being.

Continuum mechanics

The BODY is an idealized model of the certain “material” object and (or) its parts with all physical microparticles and interactions between them.

Astronomy

The BODY (celestial body, astronomical object) is “a material object”, which formed naturally in a space environment.

1.3. The BODY – one`s reflection of manifested part of an object

The object becomes “visible” (one is able to manifest it) for someone due to “the border line” (the difference in the level of density, color, brightness, etc.). Exactly this part of the World (in the broadest sense of this word) that is separated by “the border line”, becomes A PART OF THE OBJECT an individual will consider as its identifier during cognition.

We analyzed many modern definitions of the concept BODY and offer the most common one:

**THE BODY is
a part of the object limited by the border line from
the World (in the broadest sense of this word). An
individual has manifested it in the certain range of
values of the certain physical quantities.**

During cognition, an individual considers the BODY of an object as its identifier.

**THE BODY is
one`s manifested part of an object he has reflected as
sensations. As a result, this one is able to identify this
object during cognition.**

1.4. The parameters of an individual`s receptors of his BODY as “SPLIT of cognition”

The BODY of an individual is the same “mechanism” (device) that allows to cognize the World. Why is it so, and not in any other way?

First of all, the receptors of one`s BODY allow to manifest SOMETHING as sensations and then reflect them as objects, processes and phenomena. And this process is called manifestation (perception).



The terms the author connected with MANIFESTATION and PERCEPTION concepts he described in more detail in the II “SECRET KNOWLEDGE” Volume of “The New Cosmic Philosophy” book series (author`s note).

It is clear that the BODY of any individual initially has limited prospects when cognizing the World (in the broadest sense of this word), since his potential for manifesting the states of SOMETHING as sensations is limited by the parameters of his body receptors.

The parameters of one`s body receptors are the same “SPLIT of cognition”, through which this one can cognize the World (in the broadest sense of this word).

THE SPLIT of cognition represents lots of the ranges of values of different physical quantities, in which one is able to manifest stimuli of the body receptors as sensations.

1.5. The subjectivity of the BODY concept

My readers may have lots of questions like:

- Do individuals see the body of an object in different ways?
- Do individuals perceive the parameters of the object's body in different ways?



The answer is quite simple. Yes, they do!

Imagine that ones are human beings and snakes, and the objects of their cognition are railway engine and dog.

It goes without saying that human beings and snakes will see different parameters of the bodies of these objects, since human beings and snakes will have different “border lines” in terms of a physical quantity such as “temperature”. A snake couldn't see the body of an object when its temperature will be equal to the temperature of the environment.

THE BODY is

a subjective part of an object that is a result of one's sensations he has manifested (perceived) through his split of cognition.

It appears that a snake will see these objects in the following way:



A human being will see these objects in this way:



1.6. One OBJECT – lots of the BODIES` reflections

Since there are many physical quantities, and the ranges of values of any physical quantities aren't limited by a size, then we assume that

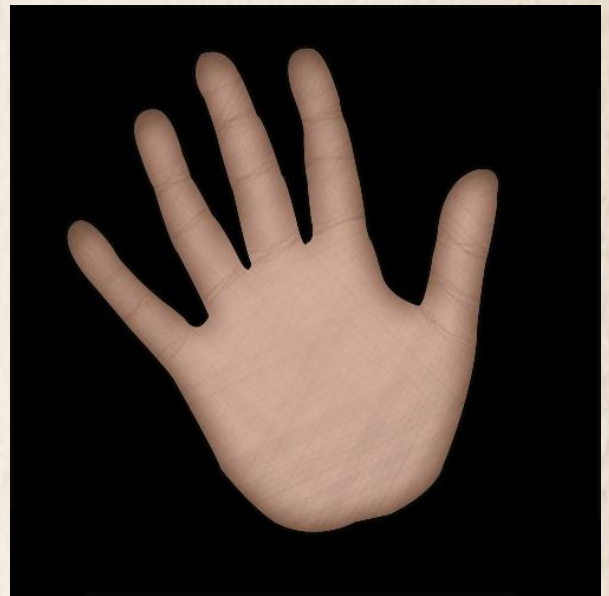
Any OBJECT has lots of its reflections as BODIES (FLESHES), the parameters of which are determined by the ranges of the certain physical quantities where takes place their manifestation (one`s sensations, perceptions).

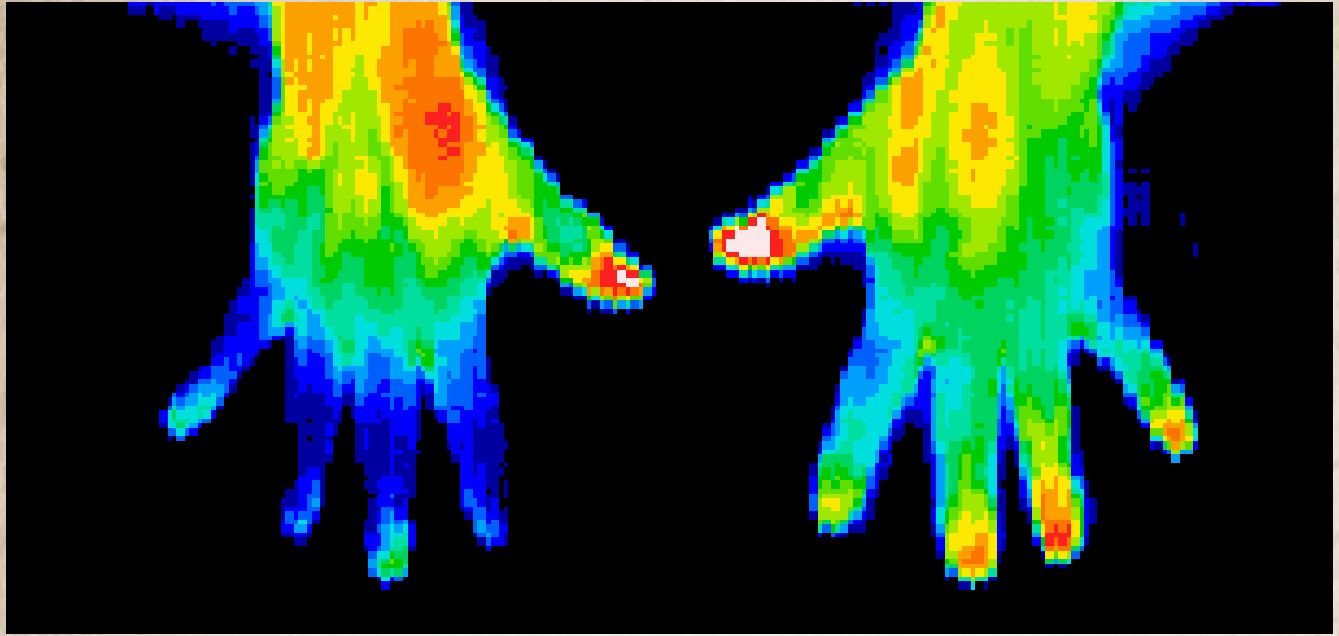
When using different parts of the ranges of various physical quantities during cognition, one will perceive different “border lines” of the cognizable object and the World (in the broadest sense of this word), which could be considered as different BODIES of this object.

THE BODIES of an object represent lots of the visible parts of an object one has manifested when using different parts of the ranges of different physical quantities during manifestation (perception).



The body of a human being looks differently when using different parts of X-ray, infrared, ultraviolet or “visible” frequency ranges as “split of cognition”.




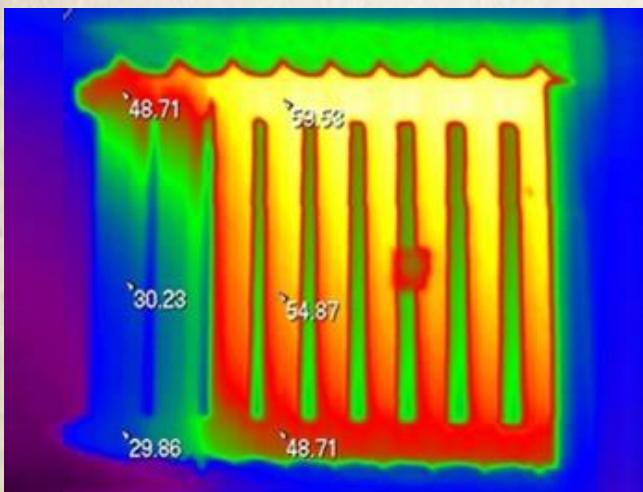


1.7. An individual uses different BODIES of an object for cognition

Let's assume that an individual has reflected the BODY of an object, using for manifestation the certain range of values of the certain physical quantities.

In this case, we can assume that any changes of this particular type of physical quantities and of this particular range of values will lead to "a visible" reaction of this BODY to the corresponding "stimuli".

 A cast-iron radiator. The body of an object was manifested in the infrared frequency range. Any changes of a temperature in different areas of its body will lead to changes of its "visible" sizes.



But these changes will not impact the BODY of this object that was manifested in another “visible” frequency range. A temperature change of radiator also will have no impact on this projection and will be as follows:



THE BODY of an object is able to respond to stimuli of the certain range of physical quantities where this BODY was manifested.

1.8. VISIBLE and INVISIBLE objects

An individual can divide all the objects into two categories: “visible” and “invisible” ones:

**A VISIBLE –
a subjective characteristic of an object, the FLESH
(BODY) of which one is able to manifest, i.e. one is
able to feel (to see).**

**AN INVISIBLE –
a subjective characteristic of an object, the FLESH
(BODY) of which one isn't able to manifest, i.e. one
isn't able to feel (to see).**

The division of objects into “visible” and “invisible” ones is purely conventional, since one and the same object can be “visible” for one person and “invisible” for another one.

I'd like to pay attention of my readers to the words of psychics who say: I “see”, I “saw”, etc. But it is more correct to say: I “feel”, I “felt”, etc. It is so, because

the verb to SEE is usually used in connection with the eyes of human beings, and in this case, it is written in quotes ...



People with an acute eyesight see small creatures (lice, fleas...) very well and people with a weak sight see them poorly.

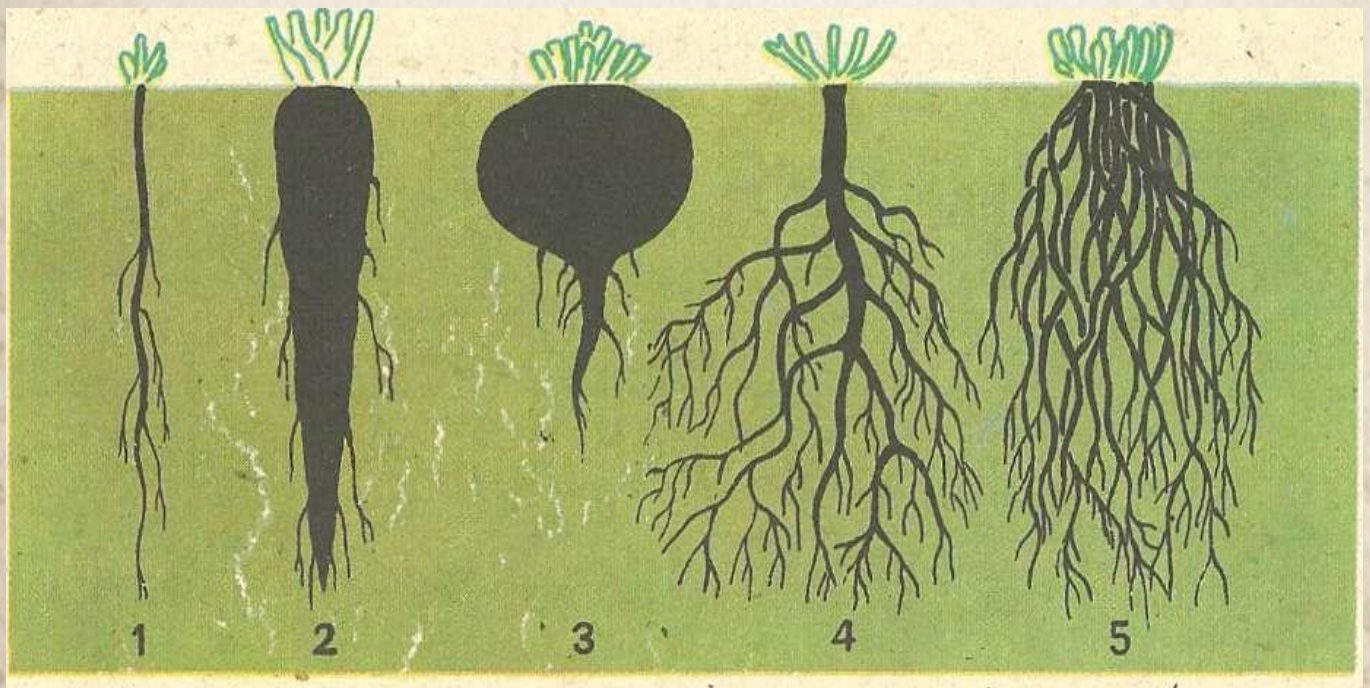
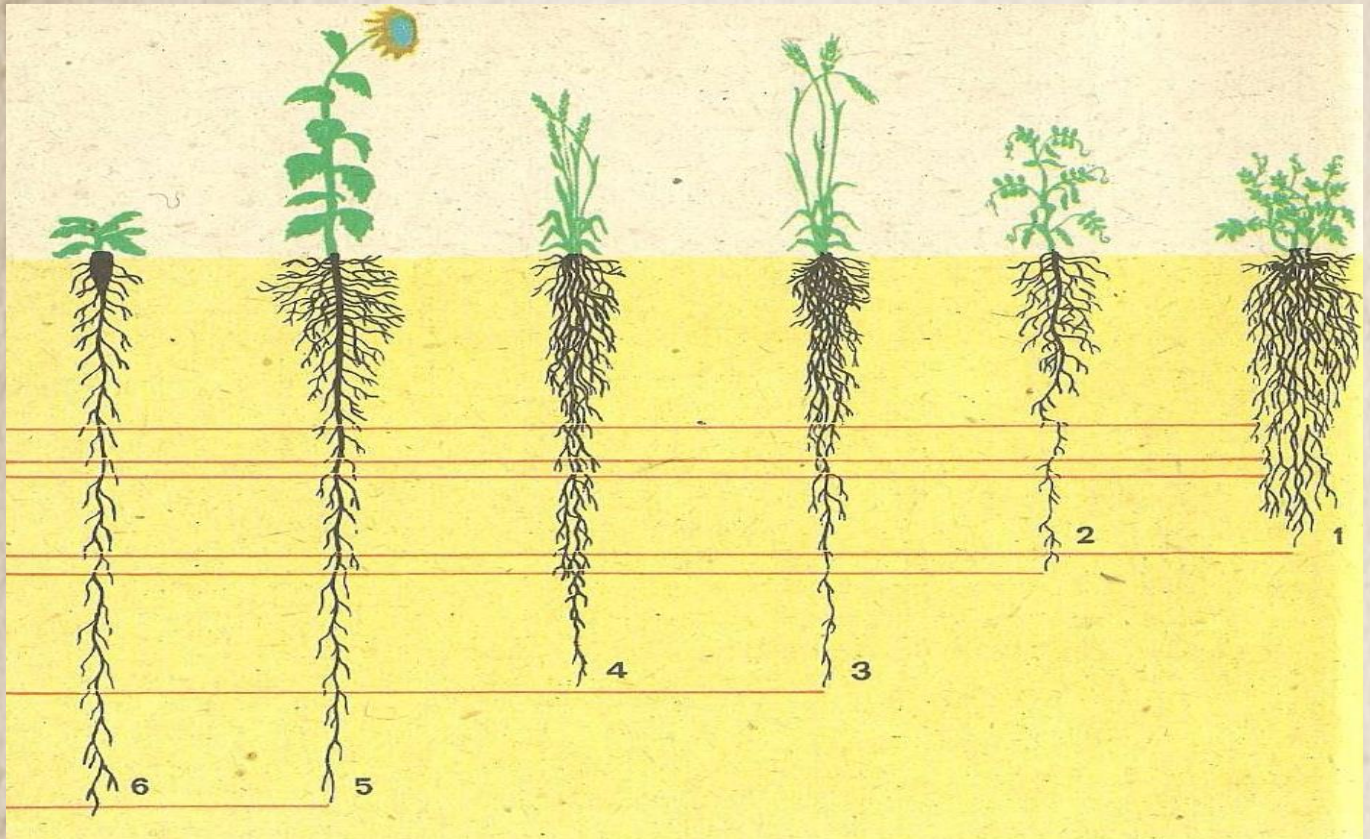


Let's take the pictures of the different plants from a kitchen garden (a summerhouse) as simple objects:



These are the parts of plants from upper level of the soil. As a rule, most people see them.

But below level of the soil, different people see these plants in different ways, and most of them don't see these parts of their "bodies".



The reasons of someone`s inability to manifest can be:

- No desire to cognize the World;
- specific parameters of the body;
- injury and improper functioning of the body receptors, informational channels, information handling unit;
- etc.

1.9. “INCORPOREAL” objects

“I don’t fully understand the word “incorporeality” as the science do. We will not talk about it until the discovery of incorporeal creatures. Because we agree to speculate only about undoubtful things.”

Konstantin Tsiolkovsky
[“The Disputes Over Monism”](#)

If an individual is able “to see” (to manifest) the object, it already means that this object has “the border line” with the World (in the broadest sense of this word), i.e. it has the BODY.

**AN INCORPOREAL –
a subjective characteristic of an object, the body of
which one isn’t able to manifest for any existing
reasons.**

that’s why we can assert that

INCORPOREAL objects do not exist!

An individual isn’t able “to see” (feel, manifest, perceive) an INCORPOREAL object!

Today it is believed by mistake that objects can be CORPOREAL (with the body) and INCORPOREAL (without the body).

It will be more correct to talk about the objects, the BODIES of which certain individuals are able to perceive ("see", manifest) and about those who aren't able to perceive ("see", manifest) them.

1.10. The hierarchy of the BODIES in the Universe

To achieve the goals of our research, we simplify the hierarchical subjective model of "the dense" BODIES of all objects in the Universe on the basis of their mass.

The hierarchy of the objects' BODIES in the Universe represents HOLARCHY.

| OBJECTS | THE BODIES of objects |
|---|--|
| <p>...</p> <p>↔</p> <p>Object (holon)</p> <p>"The galaxy"</p> <p>↔</p> <p>Object (holon)</p> <p>"A solar system"</p> <p>↔</p> <p>...</p> <p>↔</p> <p>Object (holon)</p> <p>"The Earth"</p> <p>↔</p> <p>...</p> <p>↔</p> <p>Object (holon)</p> <p>"Macroorganism"</p> <p>↔</p> <p>...</p> <p>↔</p> <p>Object (holon)</p> <p>"A human being"</p> <p>↔</p> <p>...</p> <p>↔</p> <p>Object (holon)</p> <p>"Microorganism"</p> <p>↔</p> <p>...</p> <p>↔</p> <p>Object (holon)</p> <p>"A molecule"</p> <p>↔</p> <p>Object (holon)</p> <p>"An atom"</p> <p>↔</p> <p>Object (holon)</p> <p>"A fundamental element"</p> <p>↔</p> <p>...</p> | <p>...</p> <p>↔</p> <p>The Object's body (holon)</p> <p>"The galaxy"</p> <p>↔</p> <p>The Object's body (holon)</p> <p>"A solar system"</p> <p>↔</p> <p>...</p> <p>↔</p> <p>The Object's body (holon)</p> <p>"The Earth"</p> <p>↔</p> <p>...</p> <p>↔</p> <p>The Object's body (holon)</p> <p>"Macroorganism"</p> <p>↔</p> <p>...</p> <p>↔</p> <p>The Object's body (holon)</p> <p>"A human being"</p> <p>↔</p> <p>...</p> <p>↔</p> <p>The Object's body (holon)</p> <p>"Microorganism"</p> <p>↔</p> <p>...</p> <p>↔</p> <p>The Object's body (holon)</p> <p>"A molecule"</p> <p>↔</p> <p>The Object's body (holon)</p> <p>"An atom"</p> <p>↔</p> <p>The Object's body (holon)</p> <p>"A fundamental element"</p> <p>↔</p> <p>...</p> |

Let's recall that HOLARCHY is a hierarchy of the interleaved holons, and HOLON, in its turn, is something that is at the same time a whole and a part of anything else.

The bodies of objects can be either infinitely small or infinitely large.

It should be noted that scientific community of the Earth hasn't found any bodies of objects yet, which can be simultaneously considered as the largest and the smallest Body of the Universe.

Any level of this hierarchical model is simultaneously a whole consisting of parts, and a part of the whole as well.

i.e.,

Any BODY of the hierarchy that is higher than some object being considered can include its body.

Any BODY of the hierarchy that is below some object being considered can include its body.

1.11. The phases of development of the objects' BODIES

1.11.1. THE BIRTH

When talking about the BIRTH of an object, it's desirable to talk about the BIRTH of its BODY, i.e. that is the part of an object an individual is able to manifest.

Since the BODY (FLESH) of an object is the part of it that one is able "to see", then definition of the philosophical category BIRTH can be the following:

**THE BIRTH is
a result of one's manifesting the creation of a new
object from the objects with simple bodies.**

"There is no absolute death or indifference. A contingent death is simplification of the absolute life, and a contingent birth is loss of its simplicity."

Konstantin Tsiolkovsky
"Synopsis of the Cosmic Philosophy"
1935

1.11.2. THE DEATH

THE DEATH is a moment of ultimate extinction of the functioning of the object's body. An individual can predict it as a result of decay of the object's body into objects with simple bodies.

The elementary (fundamental) elements of the object's body become the parts of the bodies of other objects of the Universe after its death (decay).

Of course, different objects have different physical parameters of their bodies at the moment of death.



The electron microscope enables to make the picture of tardigrade. Tardigrades represent microscopic Invertebrata that are usually about 1,5 mm in size. Tardigrades are one of the most resilient animals known. Some tardigrades can withstand extremely cold temperatures down to 1 K (−458 °F; −272 °C) (close to absolute zero), while others can withstand extremely hot temperatures up to 420 K (300 °F; 150 °C) for several minutes, pressures about six times greater than those found in the deepest ocean trenches, ionizing

radiation at doses hundreds of times higher than the lethal dose for a human, and the vacuum of outer space.



1.11.3. A PERISHING

A PERISHING –

a moment of ultimate extinction of the functioning of the object`s body. An individual cannot predict it as a result of decay of the object`s body into objects with simple bodies.

1.11.4. A DYING

A DYING is

a characteristic of the object`s body while it decays into simpler elements.

1.11.5. A CORPSE

A CORPSE is

a characteristic of the object`s body during the period from its death (perishing) to its decay into simpler elements.

1.11.6. A REPRODUCTION

**A REPRODUCTION is
a reproductive process during which the objects
create the bodies of their kind.**

Reproduction is based on the programs of the partners` bodies (DNA) and also on the programs individuals have created themselves.

Attention! Reproduction is the property of the object`s body, and not of the object itself! This is very important information.

1.12. The CLONES of bodies

“The term clone was borrowed from the English language into Russian.

The term clone, invented by J. B. S. Haldane, is derived from the Ancient Greek word κλών klōn, “twig”, referring to the process whereby a new plant can be created from a twig. It is the reproduction method used by plants, fungi, and bacteria, and is also the way that clonal colonies reproduce themselves. Examples of these organisms include blueberry plants, hazel trees, the Pando trees, the Kentucky coffeetree, Myricas, and the American sweetgum. The term clone is used in horticulture to refer to descendants of a single plant which were produced by vegetative reproduction or apomixis. Many horticultural plant cultivars are clones, having been derived from a single individual, multiplied by some process other than sexual reproduction. As an example, some European cultivars of grapes represent clones that have been propagated for over two millennia. Other examples are potato and banana.

The new meanings of the term have been developed in the course of time and it has been used in the sphere of growing bacterial cultures.

Dolly, a Finn-Dorset ewe, was the first mammal to have been successfully cloned from an adult somatic cell. Dolly was formed by taking a cell from the udder of her 6-year old biological mother. Dolly was publicly significant because the effort showed that genetic material from a specific adult cell, programmed to express only a distinct subset of its genes, can be reprogrammed to grow an entirely new organism.

And in late 1990`s of the XX century people already implied the possibility of using the same technology to produce genetically identical bodies of the human beings. The term ceased to be the property of scientific community, it was picked up by media, cinema, literature, creators of computer games. It became a common word without any special meaning, which it possessed a hundred years ago.”

Wikipedia — free encyclopedia

**A CLONING is
a process of coping (duplicating) the bodies of
objects.**

Any bodies of objects of any hierarchical levels can be cloned (copied). These can be the bodies of atoms, molecules, plants, animals, human beings, planets, etc.

**A CLONE is
the body of an object or a group of the bodies of
objects that represent a result of cloning.**

If we are talking about the human beings, then

**A CLONE is
a genetically identical body of a human being or a
genetically identical group of the human bodies that
represent a result of cloning.**

It is important to bear in mind that when creating genetically identical bodies of the human beings, only their bodies will be the same, but the organisms will be completely different (various bacteria, viruses will inhabit them ...). So, “the life cycle” and “the quality of life” of these bodies will be also different.

As a result, in biology it is meant by cloning the copying (duplicating) of objects, the results of which are their genetically identical bodies, but the copying of organisms is out of the question.



The terms the author connected with the ORGANISM concept he described in more detail in the VI “ORGANISMS” Volume of “The New Cosmic Philosophy” book series (author`s note).

Even today science and technologies reach such a high level. The 21st century will be of great importance in the history of the humankind when a human being will create the whole body of his kind.

In informatics

**A CLONE is
a system developed according to sample of another
one system.**

“Today, organ transplantation is the most attractive theme in society and different related problems such as legal, financial, ethical ones are of great interest as well. However, science and practical medicine are making new progress in the field of transplantation that is the creation of the artificial organs. In 1955, a popular Polish fantasy author Stanislaw Lem wrote a story entitled “Do you exist, Mr. Jones?” The plot is centered around a claim against the protagonist. From time to time, this car racer was involved in many crashes, after which almost all of his organs were replaced with the artificial ones. Because of this, the company where this citizen worked, refused to pay him a pension. The reason was that he became a kind of a robot or, as it is commonly said, “cyborg”. The other examples are “Star Wars” and Luke Skywalker with his mechanical arm, “Robocop” where only brain of the police officer remained in his new cyber body. What about this situation in reality, but not in fantasy?”

The modern theories are close to fantasy
www.invalirus.ru

For this reason, the most burning issue nowadays is “who are the HUMAN BEINGS?” or “what is a HUMAN BEING?”. If there will be no answer to this question, the civilization of people will again disappear from the Earth ...

1.13. What do psychics “see”?

This question isn't so simple as it may seem at first sight. Of course, a problem well stated is a problem half-solved. So, let's choose another way: “What do psychics manifest during cognition of the World (in the broadest sense of this word)?”

And we get a rather simple answer: “The BODY”!!! An individual REFLECTS different objects as the BODIES. And the bodies are also different, because manifestation is a purely subjective process. So, many psychics will manifest lots of different bodies. And only by combining all the obtained results, you can be a little (just a little bit) closer to “the true reality” and get away from “the subjective reality” of these results.

The following parable represents the mentioned above idea:

“One hundred gold miners are searching for gold. They begin to spring deep holes in order to get close to the sacramental ‘gold seam’. And everyone is confident that the faster and deeper he digs, the faster he will find a gold. But all they get it so wrong. In order to quickly find a gold, in their team must be at least one specialist who doesn't dig a hole, but only analyzes the soil ALL other miners jumble on the surface.”



There are two TV screens on the wall. They both display swimming fishes. And if only any individual notices some synchronicity in their movements, then

he will be able to predict that every screen displays two different walls of the same aquarium.



Unfortunately, this is exactly the case of all individual psychics, even of very gifted ones working with the very wide ranges of different physical quantities. They “see” correctly through the very “narrow” “SPLITS of cognition” of their

bodies. Due to it, there are a limited amount of information received and also mistakes in the interpretation of some sensations, by using which they try to describe not the object`s BODY they have manifested, but THE OBJECT itself.

Thus, it often turns out that you feel the tail of a mouse, but it is the tail of a lion, actually.

2. THE BODY of a human being

THE BODY of a human being is the part of a human being an individual has manifested (seen) in the certain range of the values of the certain type of physical quantities.

It follows from this definition that one individual perceives one type of a human being body with peculiar borders and outlines while another one will perceive completely different body ... Different individuals have different parameters of the receptors of their bodies and different parameters of the channels for information receiving and processing ...

2.1. THE VISIBLE and INVISIBLE bodies of human beings

There are lots of bodies and their number absolutely depends on the value of discretization of the manifestation range and on the number of physical quantities necessary for manifestation.

THE BODIES of human beings are lots of their parts one has manifested (seen) during manifestation in the different ranges of different physical quantities.

Based on the information that a human optical canal (as example) for information receiving and processing is able to manifest some part of the range of electromagnetic radiation, then we can presuppose that:

A human being (one, individual) is able to divide a human being (object) during cognition of himself or of a new human being (object) into two parts: VISIBLE and INVISIBLE ones.

This division is conventional, i.e. the frequency range of electromagnetic and any other oscillations is continuous. One can divide it into any parts and give

them any names, actually. This is done for a better understanding (explanation) of any processes and phenomena.

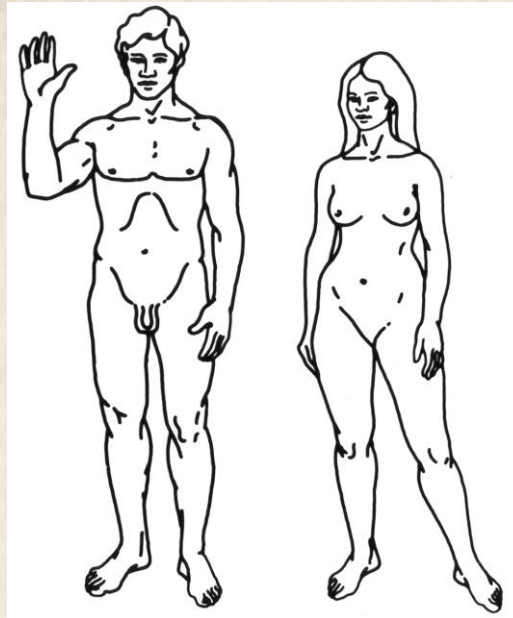
2.2. “THE DENSE” BODY of a human being

Most human beings **see** “**THE DENSE**” or **material body** of a human being, using their eyes for manifesting (perceiving) it – specialized sensory organs of the human beings that are the parts of their “dense” bodies with ability to perceive electromagnetic radiation in the wavelength band (the frequency from 405 up to 790 Fresnel). They provide with a visual function. This part of the spectrum is usually called “the optical split” of human beings.



The terms the author connected with the OPTICAL SPLIT concept he described in more detail in the II “SECRET KNOWLEDGE” Volume of “The New Cosmic Philosophy” book series (author`s note).

“The dense” body of a human being is the following:



“The body of a human being consists of different cells that create tissues. They ensure homeostasis and the viability of the human body. The body contains trillions of cells, the fundamental unit of life. At maturity, there are roughly 30^[5]–37^[6] trillion cells in the body, an estimate arrived at by totaling the cell numbers of all the organs of the body and cell types. The adult male body is about 60% water for a total water content of some 42 liters. This is made up of about 19 liters of extracellular fluid including about 3.2 liters of blood plasma and about 8.4 liters of interstitial fluid, and about 23 liters of fluid inside cells. The human body is composed of elements including hydrogen, oxygen, carbon, calcium and phosphorus. The body consists of 22 essential chemical elements: calcium, phosphorus, oxygen, sodium, magnesium, sulfur, boron, chlorine, potassium, vanadium, manganese, iron, cobalt, nickel, copper, zinc, molybdenum, chromium, silicon, iodine, fluorine, selenium.”

2.2.1. The hierarchy of “the dense” BODIES that are inside “the dense” body of a human being

| OBJECTS | The BODIES of objects |
|-----------------|-----------------------|
| ... | ... |
| ↔ | ↔ |
| ... | ... |
| ↔ | ↔ |
| Object (holon) | The body |
| “a human being” | of “a human being” |
| ↔ | ↔ |
| Object (holon) | The body |
| “Organ” | of “Organ” |
| ↔ | ↔ |
| ... | ... |
| ↔ | ↔ |
| ... | ... |
| ↔ | ↔ |
| Object (holon) | The body |
| “Cell” | of “Cell” |
| ↔ | ↔ |
| ... | ... |
| ↔ | ↔ |
| ... | ... |
| ↔ | ↔ |
| Object (holon) | The body |
| “Molecule” | of “Molecule” |
| ↔ | ↔ |
| Object (holon) | The body |
| “Atom” | of “Atom” |
| ↔ | ↔ |
| ... | ... |

2.2.2. The variety of “the dense” bodies of human beings

It is generally believed that human beings of the various RACES inhabit the Earth. Since ancient times, this word touched upon the inherited biological traits of the human bodies, so, we can talk about RACES of the BODIES.

“[RACE](#) is a concept used in the categorization of humans into groups, called races or racial groups, based on combinations of shared physical traits, ancestry, genetics, and social or cultural traits. Although such groupings lack a firm basis in modern biology, they continue to have a strong influence over contemporary social relations.

Social conceptions and groupings of races vary over time, involving folk taxonomies that define essential types of individuals based on perceived traits. Scientists consider biological essentialism obsolete, and generally discourage racial explanations for collective differentiation in both physical and behavioral traits.

Even though there is a broad scientific agreement that essentialist and typological conceptualizations of race are untenable, scientists around the world continue to conceptualize race in widely differing ways, some of which have essentialist implications.”

Wikipedia — free encyclopedia

**RACE is
a system of the human populations,
which have similar complex of the certain inherited
biological traits of the dense human BODIES.**

First of all, the traits of different races manifest themselves as a result of a prolonged adaptation to various environmental conditions. Another reason for their manifestation consists in the different initial conditions at the time of a human being creation.

The traits of different races manifest themselves:

- first of all, as a result of the different initial conditions at the time of creation of the human bodies;
- secondarily, as a result of a prolonged adaptation to various environmental conditions.

We learned at school about four races of the human bodies:



The racial diversity of Asia's peoples, Nordisk familjebok (1904)

The division into races isn't absolute, because there are different racial amalgamations. These processes can gradually bridge diversities between the bodies.

But I want to pay attention of my readers to the main fact that the word-concept RACE provides the classification of people according to the significant

differences between their BODIES. These differences are so important that the human bodies of different races:

- often require an individual approach when treating one and the same diseases of their bodies;
- require different medicaments when treating one and the same diseases of their bodies;
- have different physiological and, ultimately, different physical characteristics;
- etc.

The development of the Internet causes many questions among inquisitive persons.

- Have there ever been races of human-like creatures on the Earth and how many beings were there?





- And how many human races are on the Earth?



The modern classifications divide present-day human beings according to the external appearances of the BODIES of the certain populations.

Even today most investigators continue making efforts in order to create a complete and objective classification of the human races in the anthropological literature.

2.3. **“THE SUBTLE” bodies of human beings**

“THE SUBTLE” or **immaterial** human **bodies** are **invisible** for most human beings, because abilities of their eyes aren't enough to manifest (perceive) them.

It worth mentioning that modern scientists deny the existence of the physical structures that can be identified as the so-called “subtle” bodies.

It's clear if we are talking about SECRET information, because most representatives of the scientific community aren't able to manifest it, but if they are, they could not describe what they actually “saw”.

Unfortunately, scientists don't provide us with a self-explanatory interpretation of the BODY concept. As soon as this happens, many things will be driven from the dead-lock.



The terms the author connected with the SECRET INFORMATION concept he described in more details in the II “SECRET KNOWLEDGE” Volume of “The New Cosmic Philosophy” book series (author`s note).

The invisibility of “the subtle” bodies is also conventional, since the specialized devices enable to see them.

For instance, “the subtle” bodies are connected with such concept as AURA (from Latin aura — “whiff”, “breeze”).

**AURA is
a shining around the human body. One is able to
observe it during extrasensory perception.**

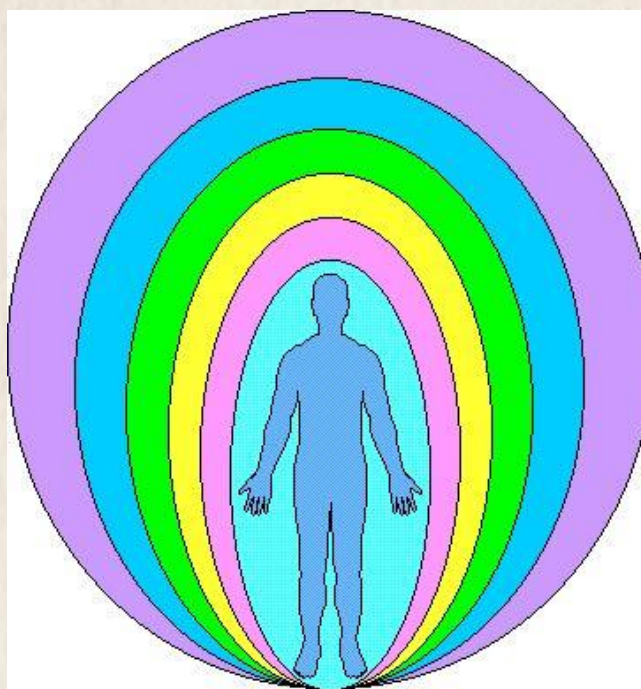
Esotery and parapsychology offer another interpretation: aura is a part around the human body, which consists of several interconnected layers that are usually represented in different colors.



According to one theory, the first indications of aura manifest themselves at the moment of the first breath of a newborn, i.e. he/she absorbs energy during breathing and, as a result, it emanates as aura. Besides, the correct breathing technique (Pranayama) of people enables to increase the volume of their aura and to acquire new color shades of it.

Isaac Newton was the first who divided a continuous spectrum of the visible light flux into seven colors. This division is conventional and is almost random. It's most likely that Newton was under the influence of European numerology and based on the seven notes in octave (compare: 7 metals, 7 planets ...), which

was the reason to identify these seven colors. Today it is commonly accepted to divide the spectrum of a visible light into seven **basic** colors (but this division is very conventional).



The white light decomposes into the seven basic colors after passing through the prism. There are seven colors in the rainbow: red, orange, yellow, green, blue, indigo and violet.

The Eastern philosophy of Hinduism represents the structure of aura in detail. Different schools distinguish from five up to eight so-called “covers” or “bodies”. Sometimes they are also called “energy bodies”.

But these colors are “basic”. In fact, there are lots of colors. All depends on the sampling of the particular range we are going to use.

According to Newton, the whole “theoretically visible” part of the light flux spectrum is approximately $790-405 \text{ THz} = 385 \text{ THz}$. If we take 1 Hz for the sampling frequency, then 385,000,000,000,000 discrete frequencies will demonstrate all possible variants of “the basic” colors.

When we consider “the subtle” bodies in more detail, we will see the bigger number of bodies.

Because

- The frequency range of electromagnetic and any other oscillations is continuous. It can be conventionally divided into any parts with any names. This is done for a better understanding (explanation) of any processes and / or phenomena;
- the number of areas, into which an individual can divide the frequency range of electromagnetic and any other oscillations in order to develop his theory depends only on this individual;
- the number and names of “the subtle” bodies of a human being are different in different teachings;

we can assert that

Any object has unlimited number of the BODIES and their number depends only on one's sampling range for manifestation (perception) and on the number of physical quantities used.

Due to the fact that the World of the certain human being is subjective, and represents the result of two parallel processes of cognition: study (cognition of PUBLIC and NON-PUBLIC information and manifestation (perception) (cognition of SECRET information), then one can assert that every human being (as an individual) is able to create his own hierarchical model both of "the dense" and "subtle" BODIES.

2.4. The overall philosophy of the DENSE and SUBTLE human bodies

2.4.1. The physical origin of the DENSE and SUBTLE human bodies

The DENSE human body is a result of the bodies` reproduction. Every human being has this function from the birth. The material body always requires resources of energies and substances for the development. The main sources include water, air, food and all substances of the Earth. During digestion of food and liquid, all influent substances, passing through various biochemical processes, produce substances and “dense” energies that are necessary for a proper functioning of “the dense” body.

**DENSE ENERGIES –
a conventional name for energies, the main
parameters of which one is able to measure and
study at this very moment.**

The functioning (moving, work) of every “dense” object of “the dense” human body (atoms, molecules, organs...) gives a boost to appearance of bioelectrical signals transmitting through “the dense” body. Their electrical activity creates “the subtle” electromagnetic fields. We use the word “subtle” because of high frequency of these electromagnetic fields. It`s very difficult to manifest (perceive) them and to investigate as well, even if using the modern devices.

**SUBTLE ENERGIES –
a conventional name for energies, the main
parameters of which one isn't able to measure and
study at this very moment.**

So, we can assert that bioelectrical signals maintain the functioning of every cell of “the dense” body, their emission creates the so-called “subtle” fields. The resonances of all bioelectrical signals of “the dense” human body create the “SUBTLE” bodies of a human being.

2.4.2. The nature of the ENERGY body of a human being

The lots of “THE SUBTLE” human bodies create the so-called ENERGY body of a human being. Since there are many “subtle” bodies, the energy body of a human being is multilevel (multilayered). Every level (layer) represents a separate body, which was manifested in the certain range.

The energy body also has its own organs, which are called CHAKRAS or energy centers. The most important organs are called BASIC chakras – there are only seven of them. But there are also hundreds of secondary energy centers, three energy storages and many tiny energy pores, which enable energy exchange. The energy body has the main energy channel (a kind of the spinal cord of “the dense” body). And so on and so forth.

It becomes clear that “the dense” body of a human being and his “subtle” bodies are tightly interconnected.

2.4.3. The interconnection between ENERGY and DENSE body of a human being

THE DENSE BODY is a visible part of a human being, which individuals are able to manifest in the wavelength band from 405 up to 790 Fresnel.

THE ENERGY BODY represents lots of the SUBTLE bodies of a human being, which individuals aren't able to manifest in the wavelength band from 405 up to 790 Fresnel. As a result, they are invisible for most people.

According to various reasons, we wouldn't describe the structure of "the subtle" bodies in detail in this volume. Firstly, all "the subtle" bodies are subjective. Secondary, there is a vast volume of information on this subject on the Internet.

2.4.4. Short conclusions

- “The dense” body of a human being and lots of his “subtle” bodies are the parts of one and the same object under conventional **a human being** name;
- An individual is able to manifest “the dense” body only as one type of image, since he uses one of the narrow ranges of the wavelength band from 405 up to 790 Fresnel (the technical parameters of eyes of the dense human being body determine this range) during perception;
- Individuals are able to manifest “the subtle” bodies as many images, since they use different ranges of the superhigh frequencies during perception;
- Water, air, food and different substances of the Earth are necessary for “the dense” body in order to get beneficial substances and “dense” energies our “dense” bodies are in need of for the proper functioning;
- “The subtle” bodies use “subtle” energies of the World (in the broadest sense of this word) for their proper functioning;

- “Subtle” energies flow through “the subtle” energy channels, i.e. through their “subtle” energy bodies;
- Lots of “the subtle” bodies create the ENERGY body of a human being;
- The so-called CHAKRAS of “the subtle” body or the basic energy centers are peculiar organs of “the subtle” energy body (analogue of the organs of “the dense” material body);
- The main objective of CHAKRAS of “the subtle” body (the same purpose as the organs of this body have) is renewal of “the subtle” energies and their transformation in order to correspond to all spectrum of energy demands of “the subtle” energy body;
- The secondary objective of CHAKRAS of “the subtle” body is contribution to energy exchange between any objects (people, animals, atmosphere, cosmic energies ...).

3. Authors – Mykola Krasnostup & Co



Mykola Krasnostup

CEO & co-founder of the Information Security Center Ltd.

Radio engineer, patent engineer.

Website: www.krasnostup.com

Blog: www.krasnostup.com/en/blog-en/

Email: mykola@krasnostup.com

LinkedIn: ua.linkedin.com/in/mykolakrasnostup

Skype: [mykola.krasnostup.work](https://www.skype.com/people/mykola.krasnostup.work)