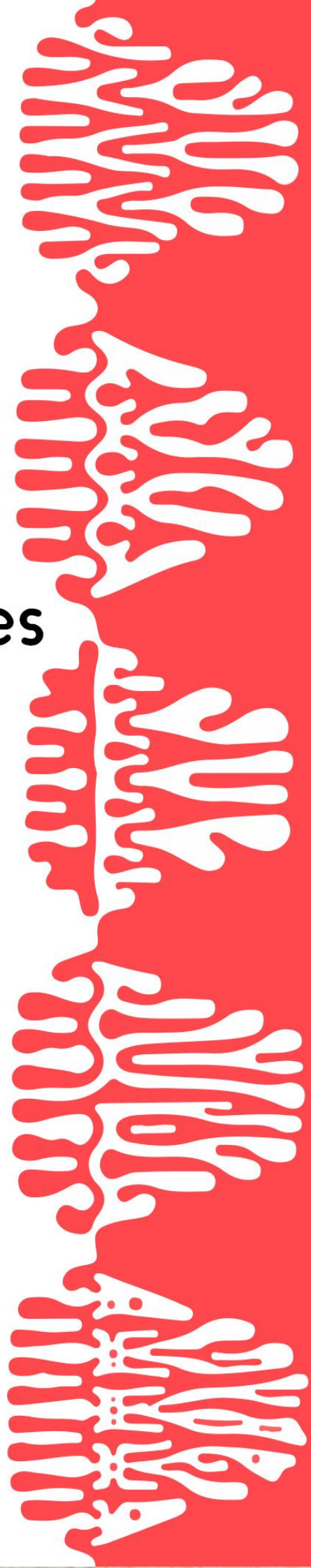
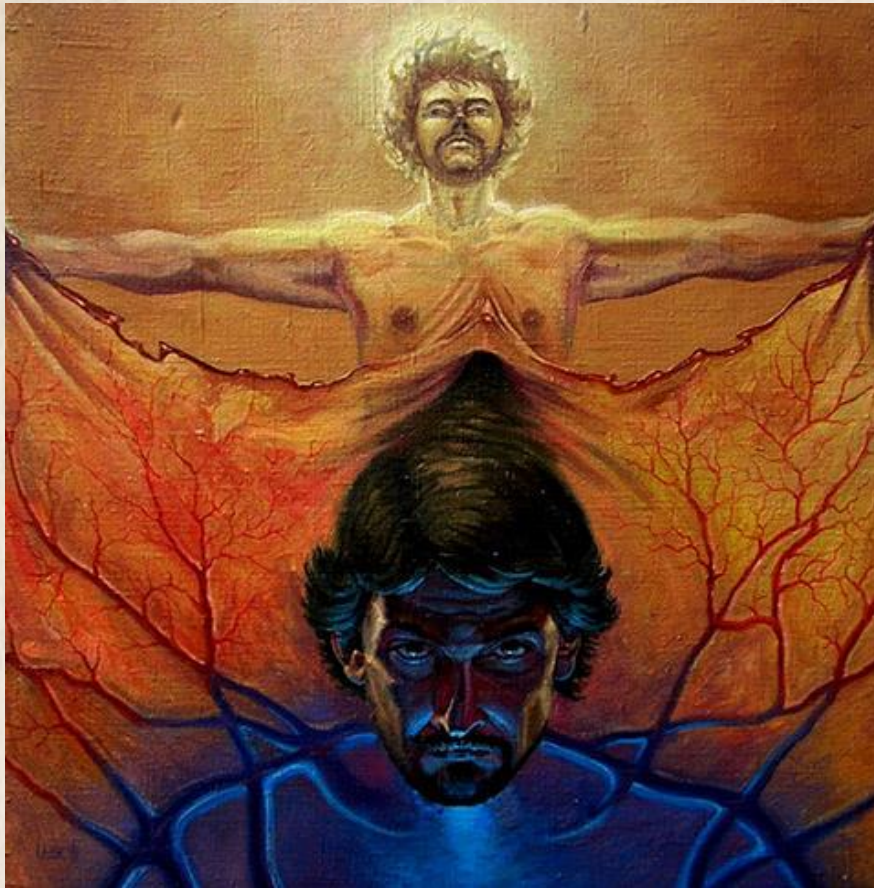


Creatures



The New Cosmic Philosophy

Volume X



"Я&Р" canvas, oil, 70x70 cm, 1999.

Copyright © [Serge Laisk](#)

An amateur`s essay on the Universe ...
Who are we? Where are we from? Where do we go?
A Human being, his Worlds, his Gods...

Copyright © 1973-2018, [Mykola Krasnostup & Co.](#) All Rights Reserved.

Cover page - Copyright © 2013, Eugene Prodayko. All Rights Reserved.

This e-book or any portion thereof may not be reproduced or used in any manner whatsoever without the express written permission of the publisher except for the use of brief quotations in a book review.

CONTENT

1. Will be biological knowledge of benefit to us?	5
2. CREATURES.....	6
2.1. A CREATURE is subjective concept	7
2.2. A primitive creature	11
2.3. The identification of creatures	12
2.4. Other Matter – other CREATURES	13
2.5. Wandering of matter within the lifetime of one CREATURE	21
2.6. The hierarchy of CREATURES.....	24
3. A simplified classification of CREATURES	27
3.1. according to the human body	27
3.1.1. PEOPLE	27
3.1.2. UNPEOPLE	27
3.2. according to the body composition	28
3.2.1. A CREATURE	29
3.2.2. THE ENTITY	30
3.3. according to location of the residence in the Universe	30
3.3.1. EARTHERS	30
3.3.2. EXTRATERRESTIAL BEINGS.....	34
3.4. according to location of the residence in the World (in the broadest sense of this word)	37
3.4.1. THE CREATURES LIVING IN THE WORLD.....	37
3.4.2. THE CREATURES LIVING IN ANOTHER WORLD.....	37
3.5. according to the body “visibility”	38
3.5.1. THE VISIBLE.....	38

3.5.2. THE INVISIBLE	39
3.6. according to the laws of the body functioning	39
3.6.1. according to the laws of classical physics	39
3.6.2. according to the laws of quantum mechanics	40
3.7. according to species.....	42
3.8. according to duration of the evolutionary development	43
3.8.1. more or less or comparable to the evolutionary period of the human beings	44
3.8.2. “imaginary” Gods.....	44
3.8.3. “real” Gods	46
4. DO OTHER creatures interfere in our life?	47
5. The hypotheses on THE ORIGIN of creatures (according to K. E. Tsiolkovsky)	49
5. Authors – Mykola Krasnostup & Co.....	53

1. **Will be biological knowledge of benefit to us?**

Biology is the natural science that involves the study of life and living organisms, including their physical structure, chemical composition, function, development and evolution.

Taking into account that this science has no self-explanatory subject matter up to his day, namely:

- what is CREATURE?
- what is the difference between LIVING and NON-LIVING?
- etc.

then it's problematic to use the results of it in most areas of our research.

2. CREATURES

**THE CREATURES –
a conventional name of the parts of SOMETHING.
One has manifested and reflected them as MATERIAL
objects.**

The mentioned above definition highlights the main subjective difference between A CREATURE and a simple OBJECT, which consists in ability of the first one to cognize the World, and, as a result, to form its own CONSCIOUSNESS, i. e. to systematize information about this World and keep it in the MEMORY.



The terms the author connected with the MEMORY concept he described in more detail in the XIX “MEMORY” Volume of “The New Cosmic Philosophy” book series (author`s note).

As a result of cognition, individual shapes his subjective model of the World, i. e. his subjective REALITY.

In order to identify any object and refer it to CREATURES, individual needs to:

- define the range in which he will manifest (perceive) SOMETHING;
- define the boundaries of one`s BODY in this range;
- identify the receptors of one`s BODY;

- identify the individual's channels for information receiving and transmitting;
- identify the information processing unit and decision;
- confirm the fact that individual is able to cognize the World (in the broadest sense of this word) by manifesting (perceiving) it;
- confirm the fact that individual constantly generalizes and systematizes information during cognition (REALIZES it and shapes his own CONSCIOUSNESS);
- confirm the fact that this one uses accumulated KNOWLEDGE in his activity;
- confirm the fact that individual shaped his subjective model of the World.

2.1. A CREATURE is subjective concept

Every OBJECT can be called A CREATURE, can't it?

People have an inkling that far from everybody!

The human beings consider only some part of the cognized objects as A CREATURE.

What are the criteria of this division?

There are two main criteria:

- ability to cognize the World (in the broadest sense of this word);
- the material body.

Exactly these objects the human beings refer to **CREATURES**.



Let's analyze such an object as "dog". There is no denying that it's A CREATURE (almost all readers will agree with this), since this object complies with the mentioned above definition of the given concept:

- the material BODY;
- the receptors (sensors);
- a nervous system (the channels of information receiving and transmitting);
- the BRAIN (information processing and decision-making unit);
- ability to cognize (realize);
- it shapes its subjective model of the World by processing and generalizing the incoming information;
- its subjective model of the World represents systematized objects, processes and phenomena as dangerous (a wolf, a stick ...) and safe (edible, inedible, friendly ...) objects.
- etc.



Let`s consider any other object except the well-known and well-studied plants, fishes, birds and other similar organisms:

- planets of our solar system;
- cosmic objects;
- objects created by people;
- viruses;
- bacteria;
- cells of the human body;
- etc.

Referring any object to A CREATURE (the mentioned above characteristics) is very difficult, because it`s necessary to conduct relevant experiences, having appropriate strategies, knowledge and devices for doing it.

But a clock is ticking:

- the human body becomes more complex and evolved;
- the number of human receptors is increasing;
- some human beings constantly work on their spiritual development, thereby expanding the range of various physical quantities their bodies have manifested as sensations;

- new technologies are developing and new devices are creating with ability to work in the wider ranges of various physical quantities.

Firstly, the human beings referred some objects to NON-LIVING, but when they reach a certain level of development, such objects become LIVING for them and, ultimately, will be referred to CREATURES.

It follows that:

**A CREATURE –
a subjective characteristic of the part of SOMETHING
one has manifested as object with the MATERIAL
body and ability to cognize the World (in the
broadest sense of this word).**

Referring a cognized SOMETHING to LIVING and/or NON-LIVING is about timing.

2.2. A primitive creature

Based on the modern knowledge, we can assert:

**A primitive CREATURE –
the fundamental element of matter in physics as of
today.**

“There is no substance without ability to take the form of an animal. Actually, an atom is the primitive creature. Therefore, the whole Universe is alive and there is nothing except life in it. But its degree or sensitivity is infinitely diverse and depends on the combination of the constituent atoms.

There is no absolute death or indifference. Contingent death is the simplification of absolute life, and contingent birth is the loss of life simplicity.”

Konstantin Tsiolkovsky

“Synopsis of the Cosmic Philosophy”

1935

“An atom (according to the definition) is the primitive creature. It`s indivisible and that`s why is immortal. An atom`s life is very diverse and according to the intensity of sensations, it is anywhere from 0 to infinity, depending on the circumstances.

... conventionally, complication of the atoms` binding represents life.”

Konstantin Tsiolkovsky

“LONGEVITY”

March 12, 1934.

A CREATURE may have any complexity and possess an unlimited number of diverse CRUCIAL properties.

2.3. The identification of creatures

We are used to judge A CREATURE by the main identifier – its body. But such an identification is wrong in most cases. There are many reasons for such mistakes, the main of which is “visibility” and/or “invisibility” of THE CREATURES` BODIES for an individual.

If an individual sees THE BODY of cognized CREATURE, then identifier of this creature, as a result, is its BODY.

If an individual doesn't see the BODY of cognized CREATURE, then identifier of this creature can be THE BODY, into which an invisible CREATURE has incarnated.

Remember Jesus.

The scientific classification of creatures and the study of their species are based on identifying them according to certain bodies (organisms).

Scientific hierarchical structures of the creatures` populations and species rely on such identifiers as BODIES (ORGANISMS).

And it isn't always true!!!

2.4. Other Matter – other CREATURES

The diversity of Creatures and the diversity of objects is one and the same thing.

“The humanlike and more perfect creatures are most likely to influence us. If we don't feel such an influence now, it could appear any day. There is no denying that numerous planets of the Universe are full of them.”

Konstantin Tsiolkovsky

“Unknown Reasoning Forces”

1903

“... we are surrounded by numerous living beings, each of them is “bodiless” in relation to all the subsequent and is grossly material in relation to all the previous ones ...”

Konstantin Tsiolkovsky

“Other More Dispersed Matter, Other Worlds, Other Creatures”

“Scientific Ethnics”

1928

“If on the Earth, there are creatures with different degree of perfection, then creatures of the Universe should also differ by such a degree.”

Konstantin Tsiolkovsky

“Ethnics or Natural Basis of Morality”

(1902- 1903)

“I want to stress that infinities of the past times reveal before us many worlds made up of more and more dispersed, more and more elastic substances (it is noticed that mass reduction of the particles leads to increase of their forward speed and elasticity. As a result, the complication of matter leads to elasticity decrease, the decomposition of matter leads to elasticity increase). I think that our matter will continue to evolve. In the future, it will create the worlds consisting of more and more complex, more and more massive particles. The

future generations of conscious beings will also take them for the indivisible atoms. But they will be mistaken as we are now.

What will ensue from this? The reader asks what will be next. The beings have created these bygone epochs and achieved such a level of perfection as the modern creatures do. Every dispersed world contained "its own" solid, liquid and gaseous substances, from which (very subtle matter) the reasonable beings were created. There were and will be lots of similar epochs. Our epoch is one of all existing, the epoch of reasonable earth-like creatures.

What is the result? Our imagination allows us to see the numerous epochs in the past and in the future with certain beings living there. What are they, are they connected with each other, do they show themselves in some way, and do they disappear with the incoming of a new epoch?"

Konstantin Tsiolkovsky

"The Living Beings in Space Environment"

"Except the World of human beings, there are worlds of matters of different densities and sizes. Fournier d'Albe discussed the sizes. He expressed the idea that every atom or a part of it can also be the complex world like the Earth with its inhabitants or like any solar system. Like every Milky Way or the group of Ways, i. e. Ethereal Island can be nothing more than the atom of any giant creature or any dead object (e. g., a creature's tool, the atom of a giant planet, sun, etc.). Actually, we cannot prove these thoughts, but they aren't absurd and may be close to the truth, however, we will never be able to confirm this idea. Nevertheless, these thoughts are comforting, because they express information about our common life (and touch upon our future). When I was a child, I thought that stars are the atoms of some giant creature. And indeed, practically everyone did think so.

Let's discuss other ideas, which are more likely to be checked. Nowadays we know 90 elements, which all the objects of space environment consist of: beginning from the Sun and planets and ending with the living beings. But

scientists come close to discovery of more complicated atom. For instance, water was considered to be the elementary body consisting of the integral particles. But a century ago, it turned out that its particles consist of the atoms only. Then scientists discovered that the atoms are also divisible and consist of smaller particles – protons and electrons. There is already a hint that protons and electrons also consist of even smaller particles – ethers. Probably, divisibility property of matter is unlimited. Before, the modern matter was simple and consisted of other light-weight conditional elements. Decillion of years ago these elements were even lighter, i. e. without any limits.

Theoretically, we divide all time into periods, each of which lasts decillion of years and contains its own matter – more years ago, more dispersed it was, and as for its living beings – more years ago, the less dense they were.”

Konstantin Tsiolkovsky

“Unknown Reasoning Forces”

1903

“Initially, matter was of another density. It was more dispersed for some periods. It could create creatures that now are off-limits and invisible to us. There is infinity of times behind us. How many eras, how many cases were there for the development of smart beings, which are beyond our understanding! How do they influence us, what are their relationships with each another – we have no idea about it. There are facts we don’t believe in until they touch upon us. They talk about interference of some unknown forces in the human actions. I stress the complexity of the world, but I don’t deny its automaticity and universal origin – matter.”

...

“According to our hypothesis, a molecule is an infinitely complex material substance. The well-known beings and assumed ones living near the sun and on the planets, are composed of the different molecules (oxygen, hydrogen, iron, carbon, etc.). Cast mind back and imagine the Universe billion decillions or as many years ago as possible. The less complex molecules, other planets and

suns, and creatures as well, the bodies of which consist of these simpler molecules. But molecular species emitted another invisible light, and our organs of vision aren't able to manifest it, because the magnitude of ether waves was lower and ether environment was also different, more dispersed and elastic than the modern one. The beings of that time were less dense, but they also developed and struggled for existence, in that bygone days they reached perfection and became the immortal masters of the World.

Did they survive and now are living among us, invisible to our eyes? Or have they fallen to pieces in order for other beings to appear in the visible world? It's a difficult question. A philosopher will say that the modern matter has one and the same origin. But it doesn't stand in the way of its existence in many forms, taking into account its continuous and constant evolution: from the solid metals to the trillion times less dense ether. If the old types of unorganized matter could survive, having no reasoning power, then the reasonable creatures could certainly have survived.

Bacteria and other unicellular organisms exist from the dawn of time. Moreover, a human being owes a great deal to them. Like bacteria, we are surrounded by invisible suns, planets and creatures, aren't we? And only nowadays a human being is able to distinguish them. Where do these higher creatures live? Do they inhabit only certain corners of the Universe or do they spread all over the World and can be everywhere they want? What are their properties? Do they have any connection with the present-day beings? Do they represent the beginning of the human life and of their kind, although the absolute and celestial beings? Do they include their souls (their parts)? Do they intentionally take roots into an animal or a human being at its/his conception? These are strange questions and nobody can answer them. Nevertheless, try to answer the last question, i. e. do that beings serve as the basis of a human being, do they take roots into his body at birth and represent the part of his soul with all its properties?

First of all, it makes sense to analyze all the properties of the human body and soul in relation to the structure of his body and the brain. And if somebody fails to understand the body functioning, hope that over time he will do it. Secondly,

if these creatures enliven a person, they are most likely to do the same with animals. At birth, all of them should be inhabited by spirits of the past times. It's quite strange! What is the reason for suffering in the bodies of animals and human beings! Why then a human being or an animal aren't complete initially (in their kind), if spirit inhabits its/his body at birth? Why is an infant less clever than an adult? Why do we acquire intelligence by learning and making efforts? How does the efficiency of spirit always depend on the kind of animals and the efficiency of their organs? (To explain this, there is a shoddy hypothesis about predefined harmony). Why does the destruction of organs lead to the weakening of spirit? Why does the higher spirit have no desire to occupy some fly and make Newton out of it?"

...

"Here is "a dead" planet; it has just been covered with a solid matter; it is the cradle of life. It is developing, spreading and covering the surface of the celestial body. So it was on any of lots of planets. Here is a hot planet that is shining like the sun. It consists of a mixture of dilute gases. What's in it! What life is here! As if it weren't there. But our small sun cooldowns and inevitably becomes full of life. If it originates now, then it was before, but existed in other simpler form. All is alive, but in its own way. We cannot understand everything. Life is continuous like any and all. Sometimes it makes abrupt jumps (death) and nothing more. Sometimes the state could suddenly break down. Sometimes it takes the higher form, and sometimes gets absolutely upset: its members are beaten, taken to prison, etc. Matter, time and space are everywhere. They are infinite, continuous and eternal. Life is also everywhere. It's also eternal, continuous and pervasive.

If we step back now, cast our mind back to decillions of years ago, — why don't we do such or much longer return! At that time matter and molecules were even simpler and the beings were even less dense. They formed the third world, invisible even to the second one, that, of course, still cannot be perceived by our organs of senses.

No matter how many steps we take, no matter how many decillion years we cast back to, or to the beginning of the world, we will never approach it and it will be as far away from us as in those time. These are the results of our hypothesis about the beginningless of time and the infinite divisibility of matter. Coming back through gigantic periods of time, we meet more and more new worlds with living and rational beings, endless grading of more and more ethereal generations. These cadres have no end as well as times – neither past, nor future.

Did all these creatures modify in the same way, just as the less dense matter becomes the denser one? Did these rational beings turned to be not so powerful as unorganized substance, which is preserved, as I mentioned before, in different densities till now!

If some of them are still alive, are they simpler as well as bacteria in relation to the higher animals and human beings? We cannot answer this question. I think that there can remain both simple and complex beings, more perfect than a human being and even than his perfect descendants. If we assume transformation or destruction of some of them, then it's difficult to assume the same processes in relation to all creatures, since there are lots of their species?! If they still exist, don't they have any connection with each other, don't they serve, as we discussed before, as the basis for the future creatures? These are rather tricky and difficult questions, but everything is possible. But do these creatures represent the servants of space environment as we are meant to be? What kind of organization do the members of each species represent? Do they include the higher and lower creatures?

It's an extract from my "Ethics". Many reliable people provide us with facts that confirm these thoughts. These facts show that some forces, some reasonable beings exist and interfere in our life. According to the modern science, we often cannot discover them in some usual way without considering the existence of peculiar reasoning force. Frankly speaking, being stuck by scientific achievements, I recently denied all mysterious phenomena and explained them, relying on the well-known laws of nature, hallucinations, deceit, fiction,

forgetfulness, ignorance, ill health, etc. And now I change my mind and consider more than 99% of these phenomena as mysterious ones. But not all phenomena refer to such. Some natural processes are unexplainable without referring to some reasoning forces, having regard to conscious and unknown beings. Some of these beings are similar to us (my monism), but more perfect, as we will be (evolution), the structure of others consists of the lighter elements that existed decillion years ago. It's difficult to puzzle out which of these creatures meddle in our lives. It's easier to reveal participation of that of our kind, because they have originated from the same imperfect beings as we are.

Of course, this doesn't contradict the well-known forces of nature, but we still dismiss a possibility of other beings to be involved in earth life.

People had such an idea of the earth life. The humankind is glued to the Earth and the destiny of it is eternal life. The other creatures on other planets have the same destiny. People have limited knowledge of their development and power. We hardly imagine anything higher than the earth beings, having better qualities and more advanced technical means. Taking into account our single-track mind, that is the reason why we dismiss and withhold the possibility of other beings to interfere in earth affairs of the human beings. It's a slight mistake. It consists not in the gaps of science, but only in the limitations of its conclusions. From this narrow point of view, many phenomena are still unexplainable."

Konstantin Tsiolkovsky

"Ethnics or Natural Basis of Morality"

"Worlds in Worlds. The Creatures of Different Periods of Evolution"

"Let's CONDITIONALLY call some long period of time as decillion. Decillion years ago, there was another material substance consisted of the simpler atoms. They were in harmony with other suns, other planets and other reasonable beings. More decillion years ago, there was even simpler material substance, more elastic and dispersed one. It also corresponded to other suns and its own beings. Since time extends back to infinity, we must conclude that a modern material

substance and its atom (hydrogen) has infinite complexity. We would never find out the true element of material substance. It follows that there was an infinite number of rather different worlds with different beings, more and more ethereal – as they disappeared in the deep past times.

We only know that “decillion” years can decompose our hydrogen particles, and then we will become other non-hydrogen beings. The more conditional decillions will pass, the more pervasive will be our transformation. These non-hydrogenic living beings consisting of less dense but of the same elastic matter, can be conventionally called spirits, although they are also material, like all other beings from space environment. But that isn't the point. We want to draw your attention to infinite complexity of the Universe, its creatures and their social organizations ...

Of course, now I don't question the truth and scientific character of my optimistic conclusions. At the same time, I can't conceive how someone can blame and chasten a human being or an animal representing a pure mechanism of some creator. It can be compared to blaming rapacious animals for inability to eat grass or a car for being bad or packing up. How could one blame a mannequin (an automaton), even if a new, i. e. a future science admits the possibility of similar phenomena.

Do people reveal all secrets of space environment? Is there something more complicated? Is there any connection between the beings of different densities and different epochs, i. e. between the hydrogenic and non-hydrogenic beings of the numerous categories of conventional spirits?

Now we think that it's impossible, but new knowledge is developing, does it beef up till recognizing the connection between conventional spirits?

However, a fear of being punished effects on a modern human being in the right direction and can limit the number of his wrong actions (misdeeds). Perhaps, in view of this, there is a kind of posthumous retribution made by the unknown hydrogenic and non-hydrogenic creatures. Some fear wouldn't be a bad thing,

at least for the modern people ... Our mistakes on the Earth are followed by certain results: sufferings, for example, someone who doesn't take care of himself will become sick. Does this phenomenon extend beyond posthumous life?"

Konstantin Tsiolkovsky

["The Circles of New Knowledge"](#). 1st edition. 1932

2.5. Wandering of matter within the lifetime of one CREATURE

"The animal body contains some parts of matter during all lifetime, others – for several years, several months, even for a few seconds. The matter of bones, the fluids of the cerebral ventricles are also preserved throughout life, but in general, nothing concrete is known about this, i. e. about the lifecycle of matter in these or that organs of a human being or other ANIMALS.

We are talking about the earth animals we know. Concerning cosmic beings, there could be completely different conclusions.

An animal represents the alliance of beings of the most diverse ranks, properties and sensations (cells and their parts). Some of them sense approximately the same, as, for example, the patrons of one and the same theatrical tragedy.

An animal is like a river, which always has one the same view, but ever-changing water. Or like a hotel where tourists live for some time and then give place to others. Or it resembles to the highly organized society, the members of which one day die, one day are born, but the structure of society remains the same until IT WOULD BE DESTROYED. Lots of "the Selves" inhabit the body of every being. We can discuss only the adventures of one "Self", one atom, or a tight non-disintegrating group of them (elements and molecules). Both matter of the being and the atom wanders the Universe (mostly, for a long time and on its planet). "The Self" (conditionally, SPIRIT) is connected with the surrounding environment, i. e. its sensation depends on the environment, like the sounds of a phonograph record depend on the shape of its vibrations.

Every "Self" with highly developed memory lives in an organism under the influence of illusion: it seems to live and sense inside the animal throughout its life. This would be correct if matter remained inside the animal to the end of time.

It could be applicable to special imaginary beings whose circulation of matter keeps within the bounds of the impervious cover of the entity. Such creatures don't exist on the Earth. There is a continuous exchange between internal and external matter inside earth animals. In a vacuum without any gaseous environment, society must necessarily have an impenetrable cover against the substance and internal exchange of matter. This vacuum always consists of one and the same matter, "the Self" wanders only from one part of the body to another one, from one organ to another one, having the same sensations like an organ and periodically returning to the same part of the body. Here we observe continuous but rather diverse sensation: from apathy (nirvana) of the bones, epithelium and hair to the brain functionality. The presence of "the Self" (atom) in the unconscious parts of the animal is nearly non-existence. The periodic presence in the thinking apparatus with the intervals of non-existence (a strong faint) merges subjectively into one continuous higher life.

Now let's discuss the earth animal again. For example, the functioning cerebral atom. How long does it stay in the organism? We don't know. For instance, one day. The next days it resides in the air, water, in the soil, in plants, lower animals, human being, and so on. How long and where does it reside, i. e. what kind of atmosphere is there – it depends on the circumstance and causality. The presence in dead matter is imperceptible (nirvana), in plants and lower beings – almost imperceptible and close to nonexistence, sensation is unconscious in the animals lower than a human being. Having no idea of birth and death, such beings feel immortal.

It functions, moves, manifests itself in every possible way – as a structure, a mechanism, but its material is variable. It refers to the terrestrial organism. So, its feeling refers to the material component, but as it flows away after some or

very short period of time, the same material leans toward nonexistence or becomes another being. A new matter (from outside) occupies its place and it already develops feelings of the previous matter. How to illustrate it? I feel and I am sure that its feeling exists till the destruction of my organism. But I get it wrong: "the Self" just came and will leave again in a few days, as the atom will also disappear ("the Self").

I think that I began to live and to feel since my birth. The feeling was gradually changing and continuous. But I am wrong once again: I am newly born and only a few days I feel my body, my dwelling.

Such a way of things seems to be disappointing. It's hard to swallow, it's even difficult to imagine and believe in it, but logic and science assert it. Our resentment is false. There is no resentment, and we don't lose anything. The organism activity is important, and not its inhabitants who constitute it.

Imagine a cosmic perfect animal with an internal exchange of matter. These animals inhabit, for example, some space. Let's compare them with the earth animals. In ether or other environment, the atom ("the Self") exists in one organism and always experiences atmosphere and sensations of different organs of one and the same animal.

An atom inside the terrestrial being changes between different organisms, and experiences atmosphere and life of the organs of DIFFERENT animals.

There are long intervals for an atom inside terrestrial animals, more intervals of non-existence than for isolated ones (although it definitely depends on the circumstances). This is the only difference between the isolated and the earth being. It has nothing to do with non-existence, because it's imperceptible. So, it doesn't matter what is the interval of non-existence: long or short, is it absolutely absent or a huge one.

So, "the Self" (the atom) doesn't matter whether it is an element of the isolated animal consisting of permanent matter, or an element of the terrestrial animal

having continuously flowing matter, i. e. it is able to leave the body and come back to it from the outside. Moreover, no forces and reasoning can totally convince the cleverest and the most knowledgeable person that he is a temporary guest in his body and doesn't live in it from birth to death, that is, during a hundred-year life he roams all over the Universe.

No one can fully imagine rotation of the Earth. One considers it as completely immovable, i. e. he feels it in such a way. There are as many such illusions – natural and artificial ones – as you wish.”

Konstantin Tsiolkovsky

[“Wandering of Matter Within the Lifetime of One Creature”](#)

1934

2.6. The hierarchy of CREATURES

All CREATURES are hierarchical according to variety of the parameters.

For gaining the purposes of this research, we try to create a simplified hierarchical model of all CREATURES of the Universe (the World of Human Beings), depending on the size of FLESHES (BODIES) of these objects that are “visible” to the human beings.

A HIERARCHY —

is an arrangement of items (objects, names, values, categories, etc.) in which these items are represented as being above , below , or at the same level as one another.

It should be noted that until nowadays the scientific community of the Earth hasn't found and, accordingly, hasn't determined the largest and the smallest creature of the Universe.

Any level of this hierarchical model is simultaneously a whole consisting of the parts, and a part inside the bigger whole.

In other words,

In the hierarchical structure, any creature that is higher in relation to a creature under consideration, can include this creature itself.

In the hierarchical structure, any creature that is lower in relation to a creature under consideration, can be the part of the latter.

...	...
↔	↔
...	...
↔	↔
The organism of "The Galaxy"	"The Galaxy" Creature
↔	↔
The organism of "The Solar System"	"The Solar System" Creature
↔	↔
The organism of "The Sun"	"The Sun" Creature
↔	↔
The organism of "The Earth"	"The Earth" Creature
↔	↔
...	...
↔	↔
...	...
↔	↔
The organism of "A Human being"	"A Human being" Creature
↔	↔
...	...
↔	↔
...	...
↔	↔
The organism of "An Animal"	"An Animal" Creature
↔	↔
The organism of "A Plant"	"A Plant" Creature
↔	↔
The organism of "A Mushroom"	"A Mushroom" Creature
↔	↔
The organism of "Bacterium"	"Bacterium" Creature
↔	↔
The organism of "A Molecule"	"A Molecule" Creature
↔	↔
The organism of "An Atom"	"An Atom" Creature
↔	↔
...	...

3. A simplified classification of CREATURES

3.1. according to the human body

3.1.1. PEOPLE

**PEOPLE (human beings) –
the ancient name of human-like population, it is
based on identification according to the bodies
similar to the modern ones.**

**A HUMAN BEING –
the ancient name of a particular representative of
PEOPLE.**

3.1.2. UNPEOPLE

**UNPEOPLE (un-people, nonhuman beings) -
the ancient name of creatures whose bodies differ
from the bodies of the modern human beings.**

Unpeople can inhabit the Universe as well as any other place outside it. There are lots of such creatures.

3.2. according to the body composition

The bodies of CREATURES can be of “material” or “immaterial” nature.

Every type of matter creates its own objects. Individuals distinguish the denser part (FLESH) of objects during cognition and try to comprehend its properties by investigating this particular part of the object.

The modern scientists refer objects whose bodies are based on a **MATERIAL** type of matter to the objects of “clear” physical nature. We somehow familiar with these things such as a table and a chair, a tree, an airplane and many others ... Of course, the outstanding scientist D. I. Mendeleev clarified this question.

The modern scientists refer objects whose bodies are based on a **FIELD** type of matter to the objects of “unclear” physical nature. These are fireballs, thoughts, people emotions and much more ...

The modern scientists refer objects whose bodies are based on a **DARK** type of matter to the objects of “obscure” physical nature. These objects were introduced into scientific use to explain many astrophysical and cosmological phenomena such as “dark matter” and “dark energy”.

Thus, we will use the following concepts as:

A MATERIAL –

a characteristic of the creature's BODY consisting of the elements from Mendeleyev's classification.

AN IMMATERIAL –

a characteristic of the creature's BODY consisting of the elements that differ from the material ones.

3.2.1. A CREATURE

A CREATURE –

a subjective characteristic of the part of SOMETHING one has manifested as a MATERIAL object with ability to cognize the World (in the broadest sense of this word) by manifesting (perceiving) it.

The creature's body consists of the elements of SUBSTANCE we know.

3.2.2. THE ENTITY

THE ENTITY –

a subjective characteristic of the part of SOMETHING one has manifested as an IMMATERIAL object with ability to cognize the World (in the broadest sense of this word) by manifesting (perceiving) it.

The creature`s body consists of the elements of unknown SUBSTANCE.

3.3. according to location of the residence in the Universe

3.3.1. EARTHERS

EARTHERS –

a generalized name of all creatures and entities inhabiting the Earth.

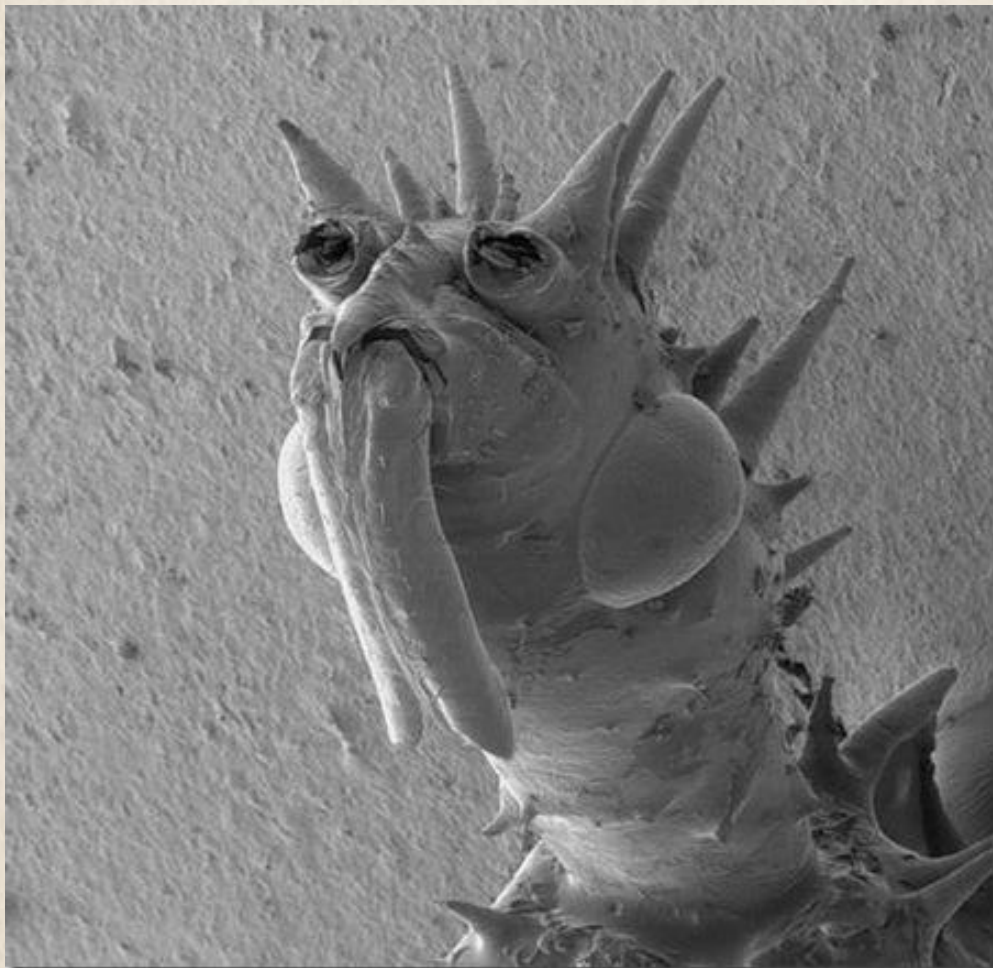
PEOPLE –

one of the many populations of EARTHERS.

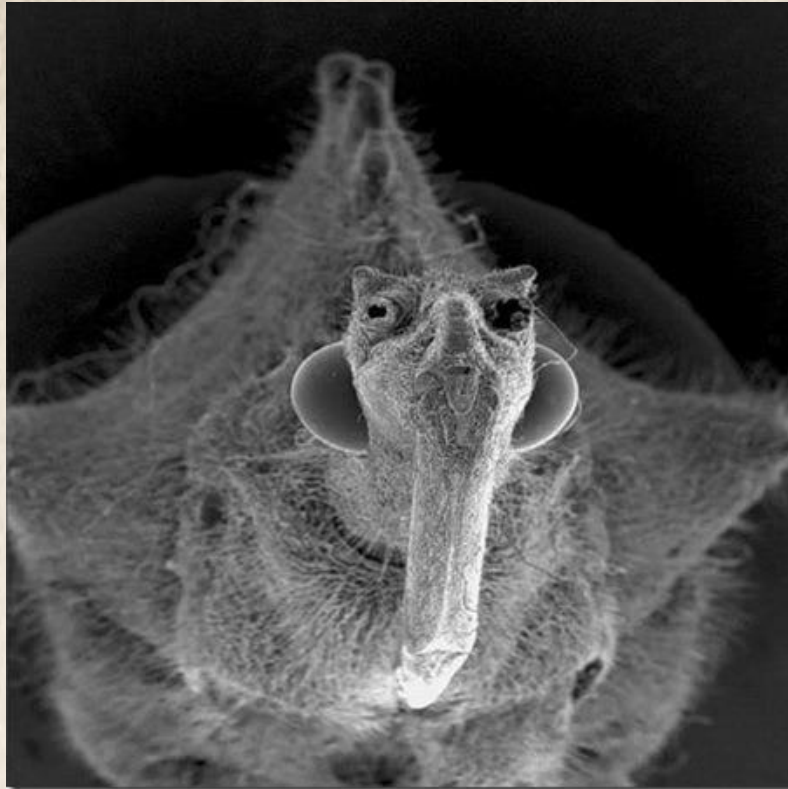
EARTHERS include:

- human beings;
- nonhuman visible beings whose main place of living is the Earth (mammals, birds, fishes ...);
- nonhuman invisible beings whose main place of living is also the Earth.

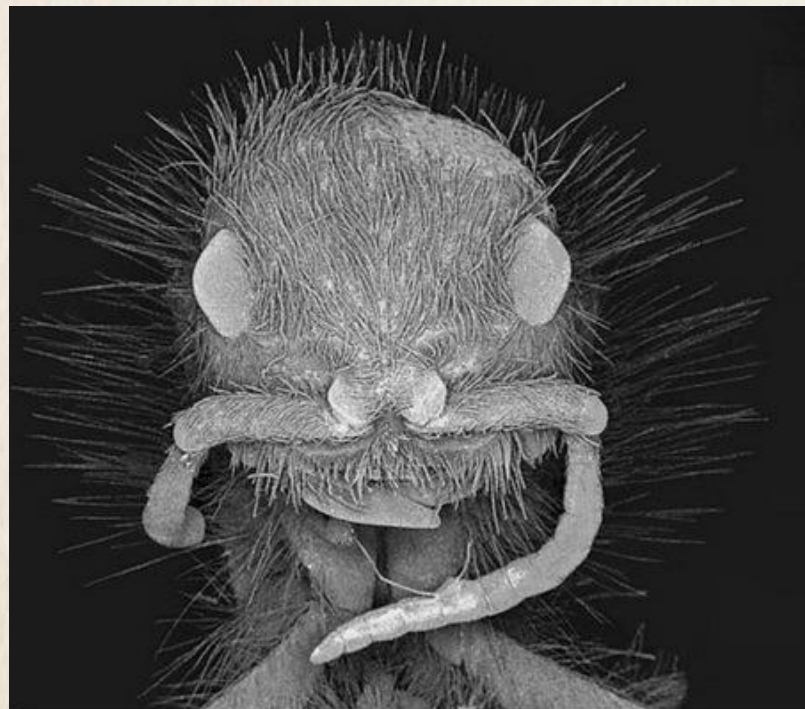
The photos below represent very small microorganisms that are invisible to the human eye, but they are also Earthers.



The photo of a microscopic creature №1.



The photo of a microscopic creature №2.



The photo of a microscopic creature №3.

Earthers are very diverse. Some of them are very small in size, others live deep under water – at the bottom of seas and oceans, others live underground in the depth of the earth`s crust, the fourth ... But they are the same Earthers as we are.

Even the most avid scientist during his whole life hasn`t seen even 0.01 % of the bodies of these objects. Do you think you are more knowledgeable in this issue?

Then test your knowledge and recognize at least some Earthers in the photos or visit appropriate sites by clicking on the photo album icon and enjoy diversity and real beauty of these Creatures.



The photos by **Steve Gschmeissner**



The photos by **Igor Siwanowicz**

3.3.2. EXTRATERRESTIAL BEINGS

**EXTRATERRESTIAL BEINGS –
a generalized name of all creatures of the Universe
whose main place of living is situated outside the
Earth.**

EXTRATERRESTIAL BEINGS can include:

- nonhuman “visible” beings of the Universe whose main place of living is located outside the Earth; they have visited the Earth one day or exist on it now;
- nonhuman “invisible” beings of the Universe whose main place of living is located outside the Earth, they have visited the Earth one day or exist on it at the present time;
- human “visible” beings of the Universe whose main place of living is situated outside the Earth. This category can appear in the near future (the migration of people to other planets of the solar system).

“On February 2, 2011, the Kepler team announced the results of analysis of the data taken between 2 May and September 16, 2009. They found 1235 planetary candidates circling 997 host stars. 68 planets were approximately Earth-size, 288 super-Earth-size, 662 Neptune-size, 165 Jupiter-size, and 19 up to twice the size of Jupiter. In contrast to previous work, roughly 74% of the planets are smaller than Neptune, most likely as a result of previous work finding large planets more easily than smaller ones.

That February 2, 2011 release of 1235 exoplanet candidates included 54 that may be in the “habitable zone”, including five less than twice the size of Earth. There were previously only two planets thought to be in the “habitable zone”, so these new findings represent an enormous expansion of the potential number of “Goldilocks planets” (planets of the right temperature to support liquid water). All of the habitable zone candidates found thus far orbit stars significantly smaller and cooler than the Sun (habitable candidates around Sun-like stars will take several additional years to accumulate the three transits required for detection). Of all the new planet candidates, 68 are 125% of Earth’s size or smaller, or smaller than all previously discovered exoplanets.

The frequency of planet observations was highest for exoplanets two to three times Earth-size, and then declined in inverse proportionality to the area of the planet. The best estimate (as of March 2011), after accounting for observational biases, was: 5.4% of stars host Earth-size candidates, 6.8% host super-Earth-size candidates, 19.3% host Neptune-size candidates, and 2.55% host Jupiter-size or larger candidates. Multi-planet systems are common; 17% of the host stars have multi-candidate systems, and 33.9% of all the planets are in multiple planet systems.

Also based on the findings, the Kepler team has estimated that there are “at least 50 billion planets in the Milky Way,” of which “at least 500 million” are in the habitable zone. In March 2011, astronomers at NASA’s Jet Propulsion Laboratory (JPL) reported that about “1.4 to 2.7 percent” of all Sun-like stars are expected to have Earth-size planets “within the habitable zones of their stars”. This means there are “two billion” of these “Earth analogs” in the Milky Way

alone. The JPL astronomers also noted that there are “50 billion other galaxies”, potentially yielding more than one sextillion “Earth analog” planets if all galaxies have similar numbers of planets to the Milky Way.”

[NASA counted more than a billion extraterrestrial civilizations](#)

Morning, 24.10.2011.

And here I would like to recollect the words of one of the most dominant – in the scientific community – and well-recognized theoretical physicists of our time.

[Stephen William Hawking](#) stated over and over again that extraterrestrial beings have existed on the Earth for a long time and the Earthers would rather be careful, anyway. He assumed that extraterrestrial beings exist for sure, but the humankind must do everything possible to avoid any contacts with them.

3.4. according to location of the residence in the World (in the broadest sense of this word)

3.4.1. THE CREATURES LIVING IN THE WORLD

THE CREATURES LIVING IN THE WORLD are the creatures of our World, i. e. the World of human beings.

**THE CREATURES LIVING IN THE WORLD –
a generalized name of all creatures of the Universe
(the World of human beings).**

3.4.2. THE CREATURES LIVING IN ANOTHER WORLD

**THE CREATURES LIVING IN ANOTHER WORLD –
a generalized name of all nonhuman creatures whose
main place of living is situated outside the Universe.**

THE CREATURES LIVING IN ANOTHER WORLD ... In years to come ... The human beings will “broaden” their “material” World to such an extent that they will perceive THE CREATURES LIVING IN ANOTHER WORLD as THE CREATURES LIVING IN THE WORLD ... Perhaps it won’t be long now ...

3.5. according to the body “visibility”

All CREATURES can be divided into two categories: VISIBLE and INVISIBLE ones.

The division of certain creatures into “visible” or “invisible” is conditional, since one and the same creatures can be “visible” to some human beings and “invisible” to others.



Individuals with acute eyesight see the creatures of small sizes (lice, fleas ...) well while people with poor eyesight see them poorly.

3.5.1. THE VISIBLE

**A VISIBLE –
a subjective characteristic of the object (creature),
the FLESH (BODY) of which one is able to manifest,
i. e. to see (to sense).**

3.5.2. THE INVISIBLE

**AN INVISIBLE –
a subjective characteristic of the object (creature),
the FLESH (BODY) of which one isn't able to
manifest, i. e. to see (to sense).**

3.6. according to the laws of the body functioning

Depending on nature of the creature's BODY, – material or immaterial – we consider it as the object whose functioning corresponds to the laws of classical physics or quantum mechanics.

3.6.1. according to the laws of classical physics

If the object's body consists of the material form of matter, this object is able to cognize the World (in the broadest sense of this word) by manifesting (perceiving) it, and then this object is called **A CREATURE** and functions in accordance with **the laws of classical physics**.

The examples are the bodies of **a human being, a helmint and a flea**.

As a result, they function in accordance with ***the laws of classical physics***:

- the objects (CREATURES) ***cannot*** be simultaneously in two different places of the Universe;
- in the Universe, the objects (CREATURES) ***cannot*** move with a speed higher than the speed of light in vacuum;
- etc.

3.6.2. according to the laws of quantum mechanics

If the object's body consists of the immaterial form of matter, this object is able to cognize the World (in the broadest sense of this word) by manifesting (perceiving) it, and then this object is called **AN ENTITY** and functions in accordance with **the laws of quantum mechanics**.

The examples are the bodies of **the human being Personalities, different spirits**.

As a result, they function in accordance with ***the laws of quantum mechanics***:

- the objects (CREATURES) **can** be simultaneously in two different places of both the Universe and the World (in the broadest sense of this word);
- in the Universe as well as in the World (in the broadest sense of this word), the objects (CREATURES) **can** move with a speed higher than the speed of light in vacuum;
- etc.

3.7. according to species

**A SPECIES —
the group of creatures with common features, they
are able to produce fertile offspring. It naturally
distributes within the certain World and changes in
the same way under the influence of the factors of its
World.**

In other words, many species of the creatures can be distributed and identified within every type of a creature.



THE EARTHEARS-like creatures include a huge number of the creatures' species inhabiting the Earth today (fishes, birds, bacteria ...).

3.8. according to duration of the evolutionary development

In order to gain the purposes of this research, we introduce such unit of time measurement as FRAME:

A FRAME \approx 14.000.000.000 years

I choose such a value as FRAME for a reason.

13,798 \pm 0,037 billion years is an approximate age of the Universe (the World of human beings) in accordance with the results of recent scientific researches.



The terms the author connected with the FRAME concept he described in more detail in the VIII "SPIRITS" Volume of "The New Cosmic Philosophy" book series (author's note).

This will allow us to develop appropriate hypotheses according to objects' interaction whose duration of the evolution is measured by FRAMES.

We understand more or less the structure of the creatures whose bodies are of a material nature ... The modern scientists constantly scrutinize such creatures as and when discover. Moreover, the discovery of new, previously unknown creatures contributes to the constant scientific development (new avenues of researches), technological development (the invention of a microscope, deep submergence vehicles, etc.). In this case we are talking about the creatures of

the same FRAME (14 billion years) as the human beings are, since the age of their evolutionary development cannot exceed the age of the Earth (4.54 billion years).

3.8.1. more or less or comparable to the evolutionary period of the human beings

The creatures whose duration of evolutionary development is comparable or shorter than the duration of evolutionary development of the human beings.

3.8.2. “imaginary” Gods

“Imaginary” Gods are the creatures whose bodies are of a material nature and their duration of evolutionary development exceeds the age of the Earth, but less than the lifecycle of the Universe (3.9 - 14 billion years), i. e. within one FRAME.

A FRAME is the historic period of a longer lifecycle than such of the Universe (the World of human beings).

Theoretically, they could arrive at the Earth many times. These creatures have developed for a longer period of time than the human beings, and that's why they are more evolved.

It's practically impossible to represent the level of their spiritual and technological development. After all, the difference in the duration of evolutionary development between us can reach up to 10 billion terrestrial years. Imagine that approximately 99% of all the inventions the human beings use today, have appeared over the last thousand years. And make your own conclusion.

Apparently, "imaginary" Gods can arrive at a certain level of their spiritual development at the creatures that meet the requirements for being "real" Gods.



The terms the author connected with "IMAGINARY" GODS concept he described in more detail in the XI "GODS" Volume of "The New Cosmic Philosophy" book series (author's note).

3.8.3. “real” Gods

“Real” Gods are divinities that in relation to the human beings have such attributes (properties) as CREATOR and ALLMIGHTY, i. e. these creatures or entities are capable of creating, destroying, changing and restoring ANY objects, processes and phenomena of the human World, including a human being himself.

It's worth noting that people can consider “imaginary” Gods as “real” ones at a certain life stage.

The bodies of “real” Gods are of an immaterial nature and the duration of their evolutionary development is measured by many FRAMES, since it exceeds the lifecycle of the Universe (over 14 billion years).



The terms the author connected with “REAL” GODS concept he described in more detail in the XI “GODS” Volume of “The New Cosmic Philosophy” book series (author`s note).

4. DO OTHER creatures interfere in our life?

Of course, they do!

Look around ... You can feel a myriad of “visible” creatures: from mites, viruses, bacteria to birds, animals, fishes ...

There is also a myriad of “invisible” creatures inside and outside our organism ...

The age of the Universe is about 14 billion years, and the age of our beloved and native Earth is app. 4 billion years. And the evolution of the bodies of modern human beings is only tens or hundreds of thousands of years. These figures allow us to form certain hypotheses even now.

On second thought it may turn out that the human beings “visit” more developed creatures on the Earth that are just looking after us.

“Maybe most people aren’t ready for the interference of other beings in the Earth life. Maybe, it would harm the modern humankind. Most people are so ignorant that consider the Universe in the way like animals do. Their religious views are unreasonable beliefs. If they see the interference of other beings in the earth doings, then now they would understand it from their religious points of view. There would be a fanaticism along with crimes and nothing more.”

Konstantin Tsiolkovsky

["The Will of the Universe"](#)

"But after all, what is happening or has already happened inside our dense world, has also took place in other invisible worlds, although in a different way. There also were perfect organisms, their unions, choosing of the highest among the highest whose perfection and power are really mind-boggling ..."

Konstantin Tsiolkovsky

["Do Any Spirits Exist?"](#)

1932

5. The hypotheses on THE ORIGIN of creatures (according to K. E. Tsiolkovsky)

"The genuine matter is the result of simpler matter evolving, the elements of which are entirely unknown to us. I want to say that once matter was lighter and more elastic, consisted of the particles smaller than electrons. Maybe that were ether particles.

When it actually was? But time is infinite just as space and matter. There is plenty of time. It cannot be expressed by any numbers. All known and imaginary times are perfect zeros in comparison with it. Use sufficient time and here we come to simpler matter.

This simpler matter is also the result of even simpler matter. There was a time of its prevalence in the Universe. So, we can continue and come to the conclusion about the infinite divisibility of matter due to the infinity of the past time.

It's up to you but considering a proton or a hydrogen as the basis of the Universe, as the genuine and indivisible element just as strange as to consider the sun or a planet to be the element.

Maybe someone, some giant who considers the whole sky as only a small particle of matter, and certain suns are invisible to him just as atoms are invisible to us, - when looking at this sky through his microscope, will finally notice the suns and exclaim: finally, I discovered the particles of this matter, that is, the sun. But he went wrong with taking the sun for indivisible atoms.

We also make the mistake when accepting electron, proton, or even ether particle for an atom. Reason and the history of sciences tell us that an atom as complex as a planet or the sun.

What's it all about! What is a practical conclusion! I want to stress that the infinities of the past times reveal before us many worlds made up from more

and more dispersed, more and more elastic substances (it is noticed that mass reduction of the particles leads to increase of their forward speed and elasticity. As a result, the complication of matter leads to elasticity decrease, the decomposition of matter leads to elasticity increase). I think that our matter will continue to evolve. In the future, it will create the worlds consisting of more and more complex, more and more massive particles. The future generations of conscious beings will also take them for the indivisible atoms. But they will be mistaken as we are now.

What will ensue from this? The reader asks what will be next. The beings have created these bygone epochs and achieved such a level of perfection as the modern beings do. Every dispersed world contained "its own" solid, liquid and gaseous substances, from which (very subtle matter) the reasonable beings were created. There were and will be lots of similar epochs. Our epoch is one of all existing, the epoch of reasonable earth-like creatures.

What is the result? Our imagination allows us to see the numerous epochs in the past and in the future, with certain beings living there. What are they, are they connected with each other, do they show themselves in some way, and do they disappear with the incoming of a new epoch?

Let's give an example. Animals and plants of the Earth have evolved. They had one source that is primary protoplasm or we can call it inorganic matter. It created protoplasm due to which appear many diverse creatures. Some of them died, but in general, the development of the higher creatures didn't interfere in the existence of lower, more ancient, primitive creatures. The following creatures live on the Earth simultaneously: bacteria, infusoria, worms, insects, fishes, reptiles, birds, mammals and human beings. Only human power spells destruction to hostile creatures. But they may need some of them (bacteria and plants), others are conscious and useful, and it makes no sense to destroy them. They can stay.

The epochs and awful periods of time saved not only the dense creatures of our time, but also the lightest beings of the past epochs, did they? Many of them

could disappear, but useful and perfect creatures could remain because people use them for their own purposes.

Earlier we affirmed the frequency of phenomena or the periodicity of worlds, numerous destruction and occurrence of them. It exists, but the periods are different, as if they go below somewhere, or they produce more and more complex matter. This can be compared to a corrugated road: now we drive up, then go down without noticing that this road is generally ramp, i. e. with the efflux of each period we come out to be lower than before. Both periods (waves) and reductions (downgrade, complication and induration of matter) have no end at all."

...

"Under suitable conditions, all substances are fit for the creation of various organisms. Take into account that on every planet, according to the substances of its surface, distance from the Sun, the properties of the latter, the temperature of the planet and other conditions, there are organisms containing the most diverse substances."

...

"With that in mind, we draw a new conclusion: creatures can live either on cold or hot planets, being composed of their seas, atmospheres and soils."

Konstantin Tsiolkovsky

["The Living Beings in Space Environment"](#)

Here is "a dead" planet; it has just been covered with a solid matter; it is the cradle of life. It is developing, spreading and covering the surface of the celestial body. So it was on any of lots of the planets. Here is a hot planet that is shining like the sun. It consists of a mixture of dilute gases. What's in it! What life is here! As if it weren't there. But our small sun cooldowns and inevitably becomes full of life. If it originates now, then it was before, but existed in other simpler form. All is alive, but in its own way. We cannot understand everything. Life is continuous like any and all. Sometimes it makes abrupt jumps (death) and that's all.

.....

At that time matter and molecules were even simpler and the beings were even less dense. They formed the third world, invisible even to the second one, that, of course, still cannot be perceived by our organs of senses.

.....

Did all these creatures modify in the same way, just as the less dense matter becomes the denser one? Did these rational beings turned to be not so powerful as unorganized substance, which is preserved, as I mentioned before, in different densities till now!

If some of them still alive, are they simpler as well as bacteria in relation to higher animals and human beings? And we cannot answer this question. I think that there can remain both simple and complex beings, more perfect than a human being and even than his perfect descendants. If we assume transformation or destruction of some of them, then it's difficult to assume the same processes in relation to all creatures, since there are lots of their species?!

If they still exist, don't they have any connection with each other, don't they serve, as we discussed before, as the basis for the future creatures?"

Konstantin Tsiolkovsky

"The Creatures of Different Periods of Evolution"

1903

That's right ... If we are talking about the Universe, i. e. about the World of human beings, then on any planet, anywhere in it, there is a continuous creation of various objects. At a certain level of evolution (perhaps very long one), these objects begin to cognize the World, i. e. they become CREATURES.

5. **Authors – Mykola Krasnostup & Co**



Mykola Krasnostup

CEO & co-founder of the Information Security Center Ltd.

Radio engineer, patent engineer.

Website: www.krasnostup.com

Blog: www.krasnostup.com/en/blog-en/

Email: mykola@krasnostup.com

LinkedIn: ua.linkedin.com/in/mykolakrasnostup

Skype: [mykola.krasnostup.work](https://www.skype.com/people/mykola.krasnostup.work)